



Palmer & Partners



Palmer & Partners

**Tuddenham Road, Ipswich, Suffolk, IP4 2SZ**

**OIEO: £425,000**



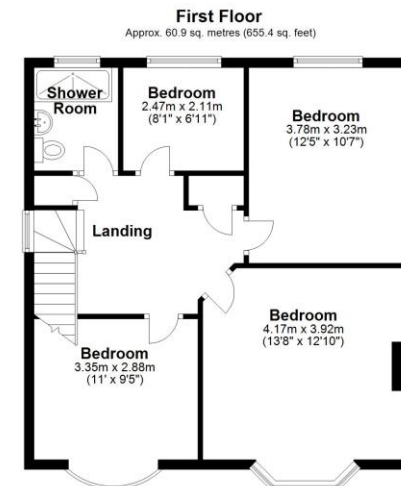
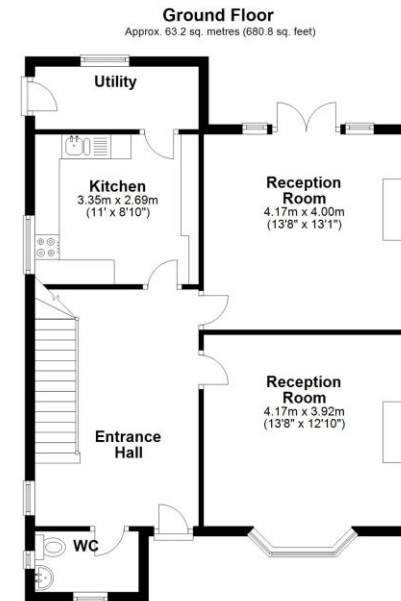
# Tuddenham Road, Ipswich, Suffolk, IP4 2SZ

This magnificent 1930's four bedroom semi-detached house is situated on the much sought after Tuddenham Road towards the north east side, just a few minutes from Christchurch Park and falling within the Northgate School catchment (subject to availability). This wonderful character property occupies a good size plot and retains many original period features throughout including original fireplaces and stained glass windows; and benefits from a wonderful well-stocked and landscaped tiered rear garden, off-road parking, and detached garage. As agents, we recommend the earliest possible internal viewing to appreciate the quality of accommodation on offer which comprises entrance hall, two generous reception rooms, ground floor cloakroom, kitchen, utility room, first floor landing, four bedrooms, and shower room.

The county town of Ipswich offers a range of local amenities including schools, university, shops, doctors, dental surgeries, hospital, two theatres, parks including the popular Orwell Country Park, recreational facilities, and mainline railway station providing direct links to London Liverpool Street Station. The vibrant waterfront has undergone an extensive rebuilding and gentrification programme and now boasts some fashionable bars and restaurants, together with the University of Suffolk.

Council tax band: D

EPC Rating: C



Total area: approx. 124.1 sq. metres (1336.2 sq. feet)

Although every attempt has been made to ensure the accuracy of this floorplan measurements of doors, windows, rooms and any other items are approximate and no responsibility is taken for any error, omission or mis-statement. This plan is for illustrative purposes only.  
Plan produced using PlanUp.





