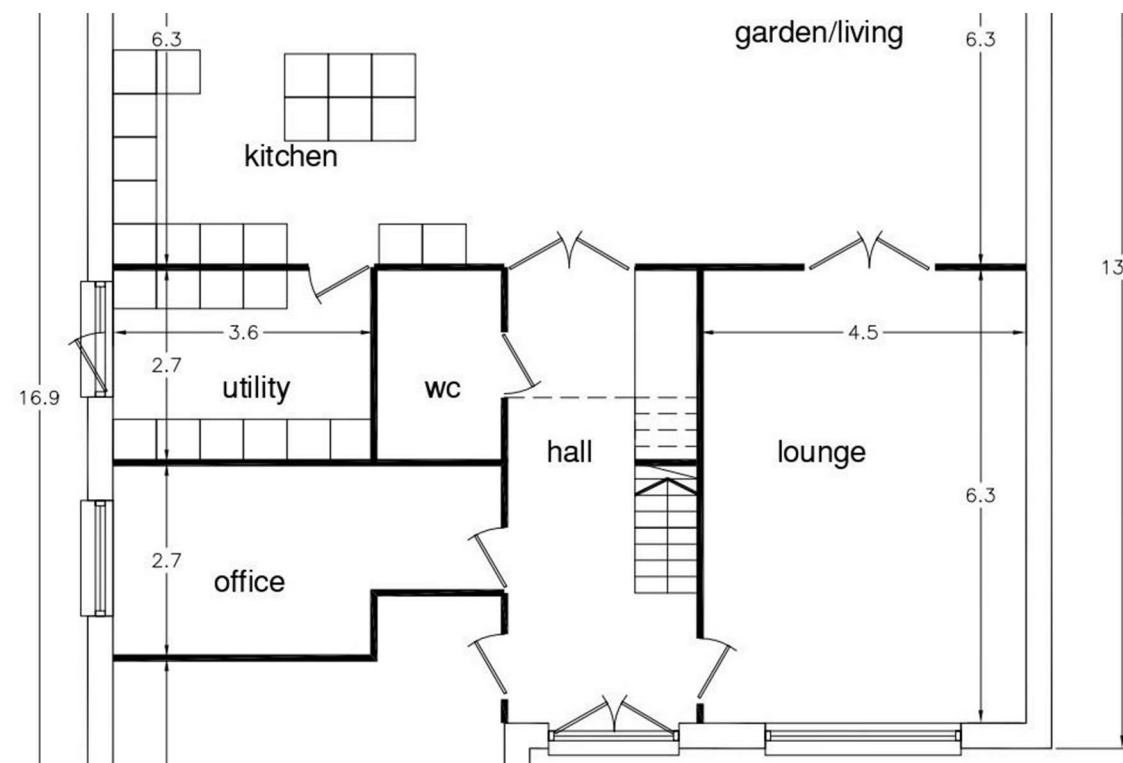




SOUTH ELEVATION



NORTH ELEVATION

Land North Of Woodcroft East Hanningfield Road, Howe Green ,  
 Essex CM2 7TQ  
 O.I.R.O £600,000

**Church & Hawes**

Est. 1977

Estate Agents, Valuers, Letting & Management Agents

EVER DREAMED OF BUILDING YOUR OWN HOME??? Church & Hawes are pleased to offer this fantastic building plot, offered with full planning permission. planning permission has been granted to construct an impressive home in excess of 3500 sq ft on a generous southerly aspect plot in excess of a quarter of an acre, in one of Chelmsford districts most prestigious roads. Full planning details can be found on Chelmsford councils planning department page under ref: 23/01239/FUL.

**Location Note**

The plot is located on a desirable road within the village of Howe Green and resides among a mixture of substantial established detached family homes. A large attraction to the area are the transport links. Chelmsford mainline station offers direct services to London Liverpool Street, and the A12/A130 are both less than a mile away. Closeby is Sandon secondary school and in Chelmsford are the grammar schools of King Edward and Chelmsford County High for girls.

