

Silver Crescent, Chiswick, W4 5SE

£795,000

**WHITMAN & CO.**

SALES · LETTINGS · COMMERCIAL



- Split-level maisonette
- Secluded garden
- Quiet residential street close to High Road
- Three beds/two baths
- 17' Reception room with bay window
- 1090sqft of accommodation

Tenure - Leasehold with share of freehold  
 Lease length - 990 years remaining  
 Ground rent - Peppercorn  
 Service charge - £585 pa  
 Local authority - Hounslow  
 Council tax - Band E

## THE PROPERTY

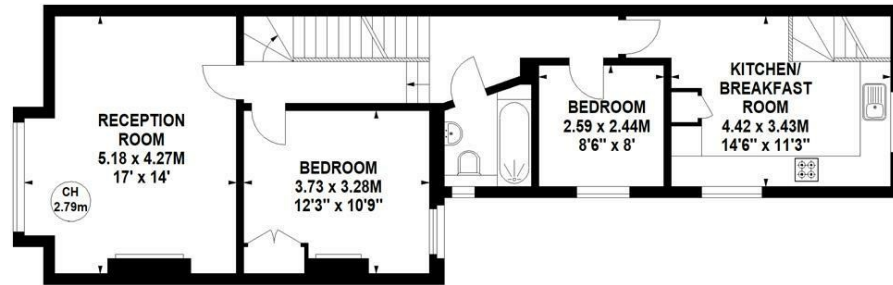
A light and spacious split-level apartment with a private garden and share in the freehold located on this quiet residential street running north off Chiswick High Road. The accommodation of 1090sqft comprises a fabulous 17'x14' full-width reception room with bay window and westerly aspect, fitted kitchen/breakfast room with stairs leading to a lovely secluded garden, three bedrooms, two bathrooms (one ensuite) and eaves storage. Silver Crescent is a popular road within a short walk of numerous shops, cafes and restaurants, Chiswick business park and a number of excellent local schools. Transport links include Gunnersbury Station (3 minutes walk), local bus routes and the A4/M4 for routes in and out of London.

### Silver Crescent, W4

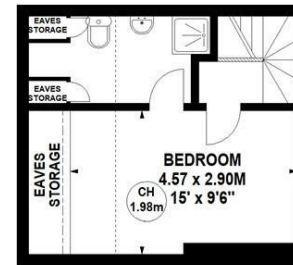
Approximate gross internal area  
**101.26 sq m / 1090 sq ft**  
 (Including Eaves Storage)  
 Eaves Storage Area  
**3.07 sq m / 33 sq ft**



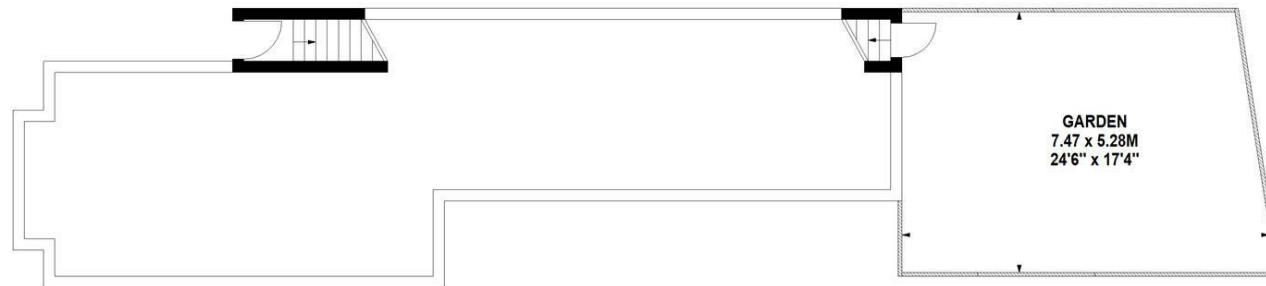
Key :  
 CH - Ceiling Height



First Floor



Second Floor



Ground Floor

Not to scale, for guidance only and must not be relied upon as a statement of fact.  
 All measurements and areas are approximate only

## SITUATION



5-7 Turnham Green Terrace, Chiswick, London, W4 1RG

Tel 020 8747 8800

E-mail [sales@whitmanandco.com](mailto:sales@whitmanandco.com)

Website [www.whitmanandco.com](http://www.whitmanandco.com)



MISREPRESENTATION ACT 1967

Whitman & Co. for themselves and for the vendors give notice that these particulars do not constitute any part of, an offer of contract. All statements contained in these particulars are made without responsibility on the part of Whitman & Co. or the vendor. None of the statements contained in these particulars is to be relied upon as statements or representations of facts. Any intending purchaser must satisfy himself by inspection or otherwise as to the correctness of each of the statements contained in these particulars. The vendor does not make or give, and neither Whitman & Co. or any person in their employment has any authority to make or give, any representation or warranty whatever in relation to the property.