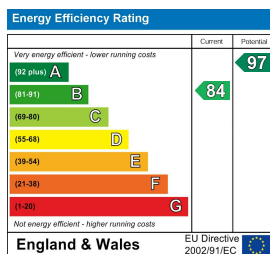




- Nearly New two bedroom house
- Almost 9 years remaining NHBC
- Fitted wardrobes and en-suite to Principle bedroom
- Modern family bathroom
- Entrance hall with cloakroom
- Excellent condition throughout
- GCH, double glazed and networked
- West facing garden with shed
- Two allocated parking spaces
- Close to Ardleigh, Colchester City Centre and Manningtree



GREENWOOD
PROPERTY CONSULTANTS

Cedarcup Close
Colchester, Essex, CO7 7TW

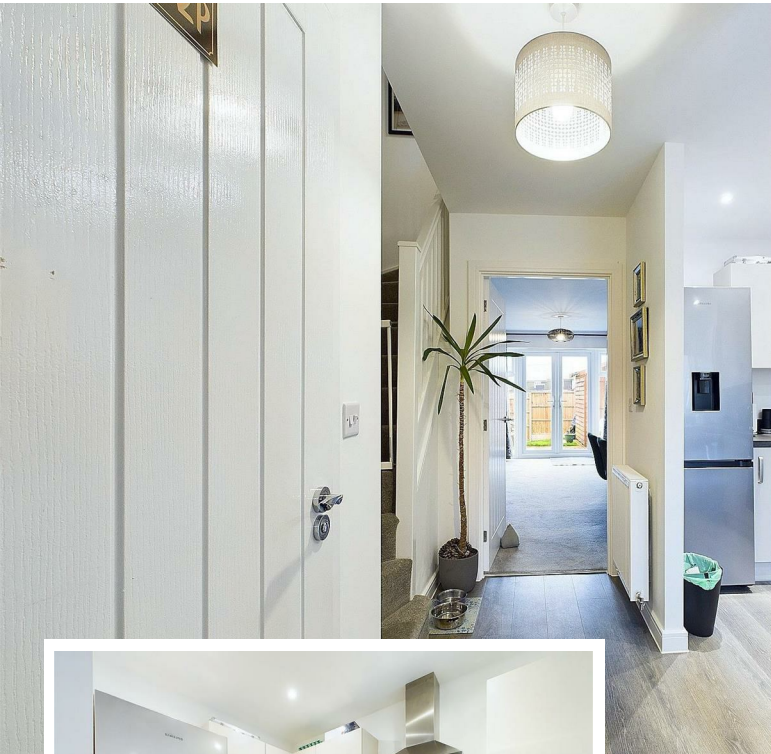
£300,000
Freehold



Essex House
42 Crouch Street
Colchester
Essex
CO3 3HH

<http://www.greenwoodpc.co.uk>
sales@greenwoodpc.co.uk
01206 616820

Agents Note: Whilst every care has been taken to prepare these particulars, they are for guidance purposes only. All measurements are approximate and are for general guidance purposes only and whilst every care has been taken to ensure their accuracy, they should not be relied upon and potential buyers/tenants are advised to recheck the measurements



Property Description

Nearly new two bedroom house in excellent condition throughout with almost 9 years remaining of NHBC warranty. Entrance hall with Amtico flooring. Cloakroom. Fitted kitchen with integrated gas hob and electric oven. Space for fridge/ freezer and plumbing for washing machine and dishwasher. Large Livingroom with downstairs cupboard and French doors onto garden. Two double bedrooms with fitted wardrobes and en-suite shower room to Principle bedroom. Family bathroom. GCH, double glazed and networked. To the rear of the property is a West facing garden laid to lawn with patio and shed. To the front of the house are two allocated parking spaces.

Location

This charming property is located between the sought after village of Ardleigh and Colchester City and is close proximity to both. Also nearby is the waterside town of Manningtree. This lovely home is ideal for First Time Buyers.

Agents Note

The owner has advised the loft is boarded and has a loft ladder. We have been advised by the current owner that there is an Estate Charge payable of £200.00 per annum.

