



# THE BURJ, GREEN STREET

BIRMINGHAM, B12 0RG

£263,632  
LEASEHOLD

NEW DEVELOPMENT \*Come and See Me on OCTOBER 5TH!\* | THE BURJ | 1 & 2  
Stylish Apartments | Walking Distance to Birmingham City Core | Communal  
Facilities | 250 Year Lease | ZERO Ground Rent | Contact Davidson Estates  
Today! | Reservations Taking Place |

# Davidson

## GREEN STREET

Come and See Me on October 5th! | 1 & 2 Bed Luxury Apartments Available | Located a Short Walk to New Street Station | Communal Facilities | 250 Year Lease | Walking Distance to BBC's New HQ in Birmingham | Close to Future HS2



| THE BURJ, BIRMINGHAM CITY CENTRE |

**\*\*OCTOBER 5TH- Come and Check Out a Range of Newly Completed Apartments- CALL TO REGISTER\*\***

Introducing the newest addition to the rapidly developing Digbeth area of Birmingham City Centre, The Burj, a 160-apartment scheme located just a few minutes on foot from the city's core.

- 1 & 2 Bed Brand New Apartments
- South Facing Balconies
- Excellently Finishes Throughout
- Communal Spaces for Residents
- Walking Distance to City Core
- Completing Q3/Q4 2024!
- Parking Available for Purchase
- New Build

Well on course for completion in 2024, 1 and 2 bed luxury apartments are available, offering stylish finishes and attractive rental yields in an area already immensely popular with creatives. Benefitting from excellent rental rates in the short term, several high-profile developments completing in the midterm, and bolstered by its proximity to both the future HS2 High Speed Rail and The Smithfield Masterplan in the long term, The Burj represents a tremendous investment option with a great selection of units available NOW.

| THE APARTMENT |

Located on the 4th level of the development, top in that section of the building, this spacious one bed apartment offers a southeast facing balcony that allows great natural light and a lovely spot to relax in the summertime.

The living room is well designed, easily divisible into a lounge/relaxing space, dining space and, with a stylish, modern open plan kitchen, an overall great space to entertain too.

The fitted kitchen comes complete with all new white goods, ready to cook a celebratory move-in meal with friends and family, while a immaculately presented bathroom, shower over bath, completes the unit.

| THE DEVELOPMENT |

The Burj will provide residents with a fantastic living experience as a gated, secure development, with lift access, and a communal rooftop terrace for residents to enjoy and take in the city skyline. Sitting just a short walk from the famous Bullring shopping centre, as well as the West Midlands Tram Extension that is well underway and offering even greater connectivity with the rest of city, the development joins the other immense regeneration going on in the area.

| WHY BUY NEW BUILD? |

\*High energy efficiency rates, meaning more manageable bills, particularly in the long winter months.

\*No major DIY necessary- just get on with enjoying the city lifestyle!

\*A blank canvas to make your own- no need REdecorate, just, well.. decorate.

\*Peace of mind with a 10-year warranty and insurance.

\*Brand new white goods.

\*No Chain. No Stress!

\*ZERO ground rent.

#### | BIG MOVES IN THE AREA |

\*BBC moving headquarters from The Mail box to purpose-built facility, The Tea Factory

\*MasterChef to be filmed at Digbeth LOC Studios, as well as filming of the upcoming Peaky Blinders film coming soon.

\*Stone Yard BTR scheme opening up easier routes between Bradford St., Green St. and Digbeth High Street

\*WM Tram line extension allowing easy travel across the city centre, out to Edgbaston and beyond.

Exceptionally exciting times and the best moment to invest in the area- invest in The Burj.

#### | KEY INFORMATION |

\*Zero Ground Rent

\*10 Year New Build Warranty

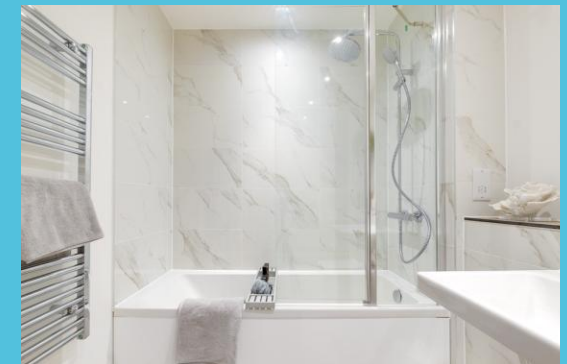
\*Service Charge Approx. £2.30/sqft

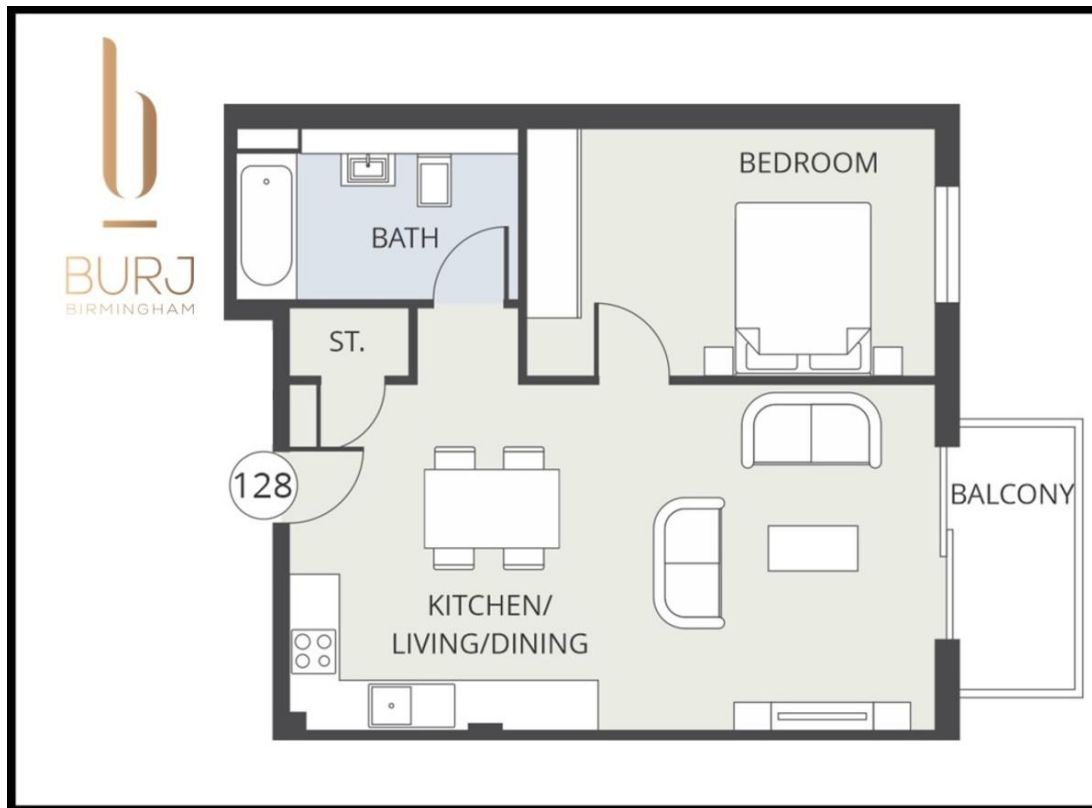
\*1 Bed ERV: £950-1200/pcm

\*2 Bed ERV: £1,300-£1,600/pcm

Contact Davidson Estates For Full Availability and Brochure |  
RESERVE A UNIT TODAY |

## GREEN STREET





%epcGraph\_c\_1\_317%

# Davidson

OFFICE

14 Frederick Road

Birmingham

West Midlands

B15 1JD

0121 455 7727

[info@davidsonstates.co.uk](mailto:info@davidsonstates.co.uk)

[www.davidsonstates.co.uk](http://www.davidsonstates.co.uk)

Agents Note: Whilst every care has been taken to prepare these particulars, they are for guidance purposes only. All measurements are approximate and are for general guidance purposes only and whilst every care has been taken to ensure their accuracy, they should not be relied upon and potential buyers/tenants are advised to recheck the measurements