



Palmer & Partners



Palmer & Partners

Edwin Panks Road, Hadleigh, Suffolk, IP7 5JL

OIEO: £350,000

Edwin Panks Road, Hadleigh, Ipswich, Suffolk, IP7 5JL

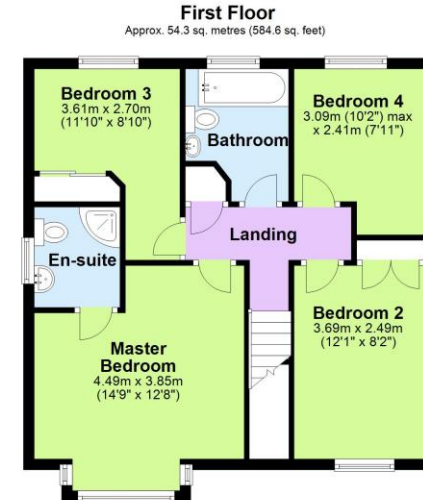
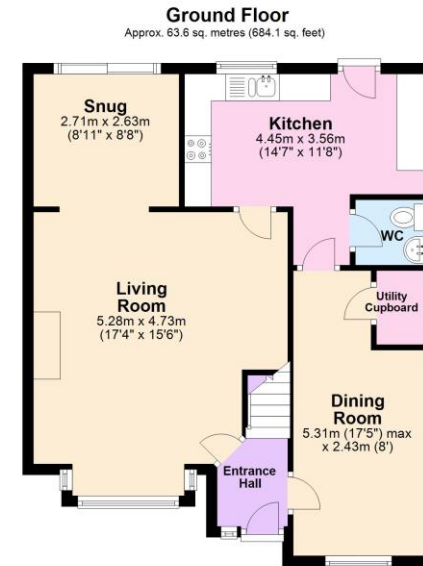
Situated just a short walk from Hadleigh town centre lies this substantial four bedroom detached house which is being sold with no onward chain and benefits from double glazing, off-road parking to the front, and a low-maintenance rear garden. As agents, we recommend the earliest possible internal viewing to fully appreciate the size of the accommodation on offer which comprises entrance hall; 18ft living room which opens through to a snug; kitchen; dining room with large utility cupboard; ground floor cloakroom; first floor landing; family bathroom; and four bedrooms, one of which has an en-suite shower room.

Hadleigh is an ancient market town in South Suffolk situated next to the River Brett between the larger towns of Sudbury and Ipswich. The town has many amenities including shops, pubs, churches, schools, outdoor recreational facilities, equestrian centre, and paintball centre. Hadleigh is home to some 246 listed buildings and the Grade II listed Topplesfield Bridge, over the River Brett, is the oldest in the country still carrying vehicles. One of the oldest one-day agricultural shows in East Anglia is also held annually in Hadleigh.

Council tax band: D
EPC Rating: D

Accommodation & Amenities

- No Onward Chain
- Substantial Detached House
- Four Bedrooms
- Two Reception Rooms
- Bathroom & En-Suite Shower Room
- Off-Road Parking



Total area: approx. 117.9 sq. metres (1268.8 sq. feet)

Although every attempt has been made to ensure the accuracy of this floorplan measurements of doors, windows, rooms and any other items are approximate and no responsibility is taken for any error, omission or mis-statement. This plan is for illustrative purposes only.
Plan produced using PlanUp.



