



Lodge 35, 2nd Lake, Pettaugh Road, Stonham Aspal, Stowmarket, Suffolk, IP14 6AT

Asking Price: £160,000 Leasehold

3 Total Bedrooms | 1 Reception Room | 2 Bathrooms

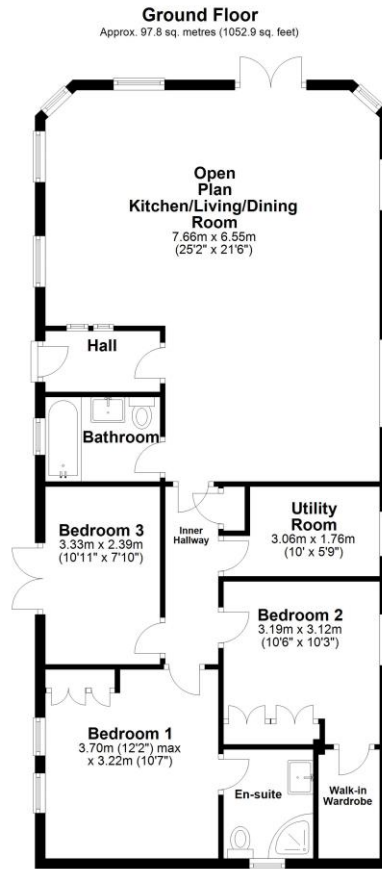
This beautifully presented 50ft Prestige Park home set on the banks of the second lake with field and lake views comes with bottled gas central heating, double glazing throughout, large decked area providing outside space to take advantage of the views, and parking for two cars. As agents, we recommend the earliest possible internal viewing to fully appreciate the size of the accommodation on offer which comprises entrance hall; 25ft open plan kitchen / living / dining room; separate utility room; large family bathroom; and three bedrooms, one of which has an en-suite shower room, and one having a walk-in wardrobe.



Pettaugh Road, Stonham Aspal, Stowmarket, Suffolk, IP14



2nd Lake, Pettaugh Road, Stonham Aspal, Stowmarket,



Total area: approx. 97.8 sq. metres (1052.9 sq. feet)

Although every attempt has been made to ensure the accuracy of this floorplan measurements of doors, windows, rooms and any other items are approximate and no responsibility is taken for any error, omission or mis-statement. This plan is for illustrative purposes only.
Plan produced using PlanUp.

Whilst every attempt has been made to ensure the accuracy of the floor plans contained here, measurements of doors, windows and rooms are approximate and no responsibility is taken for any error, omission or mis-statement. These plans are for representation purposes only as defined by RICS Code of Measuring Practice and should be used as such by any prospective purchaser. The services, systems and appliances listed in this specification have not been tested and no guarantee as to their operating ability or their efficiency can be given.

Although these particulars are thought to be materially correct their accuracy cannot be guaranteed and they do not form part of any contract.