

Dorset Close

Ipswich, Suffolk, IP4

**Guide Price: £450,000 to
£475,000**





P
&

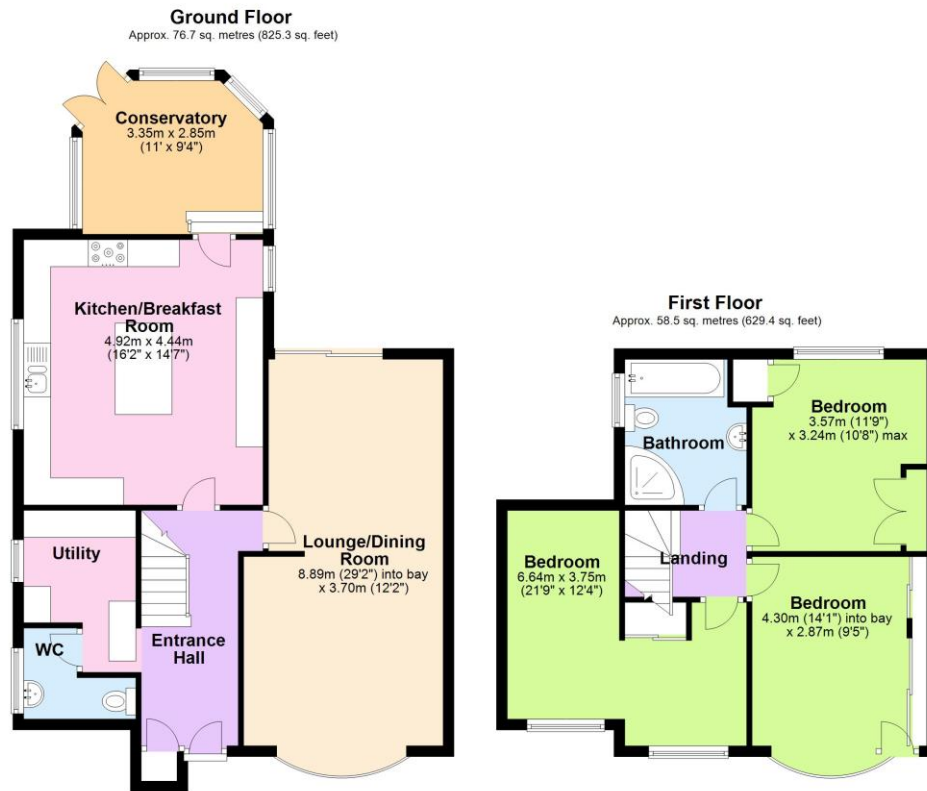
Palmer & Partners

- Extended Semi-Detached House
- Three Bedrooms
- 29ft Lounge/Dining Room
- Conservatory
- Four Piece Bathroom
- Off-Road Parking
- Detached Garage
- Beautiful Landscaped Rear Garden



Tucked away at the end of a cul-de-sac off the Tuddenham Road towards the desirable north east side of Ipswich and falling within the Northgate School catchment (subject to availability), lies this substantial and very nicely presented three bedroom semi-detached house. This exceptional family home has been extended to the rear and side and benefits from off-road parking to the front for three cars, detached garage, and a beautifully landscaped rear garden with alfresco dining area including built-in barbecue, and a wild flower secret garden. As agents, we recommend the earliest possible internal viewing to appreciate the quality of accommodation on offer which comprises entrance hall; impressive 29ft lounge / dining room; spacious kitchen / breakfast room with feature centre island; conservatory; utility room; ground floor cloakroom; first floor landing; three bedrooms, one of which has a walk-in dressing area; and a four piece family bathroom.





Total area: approx. 135.1 sq. metres (1454.7 sq. feet)

Although every attempt has been made to ensure the accuracy of this floorplan measurements of doors, windows, rooms and any other items are approximate and no responsibility is taken for any error, omission or mis-statement. This plan is for illustrative purposes only.
Plan produced using PlanUp.





Palmer & Partners

2 St Nicholas Street

Ipswich, Suffolk, IP1 1TJ

T: 01473 211705

E: suffolk@palmerpartners.com

www.palmerpartners.com

Whilst every attempt has been made to ensure the accuracy of the floor plans contained here, measurements of doors, windows and rooms are approximate and no responsibility is taken for any error, omission or mis-statement. These plans are for representation purposes only as defined by RICS Code of Measuring Practice and should be used as such by any prospective purchaser. The services, systems and appliances listed in this specification have not been tested and no guarantee as to their operating ability or their efficiency can be given.

