



19 Stevens Close, Watton

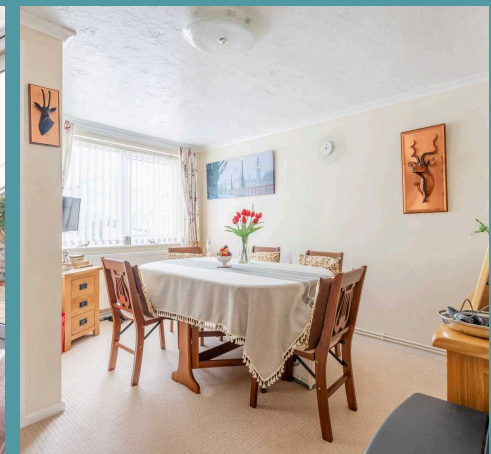
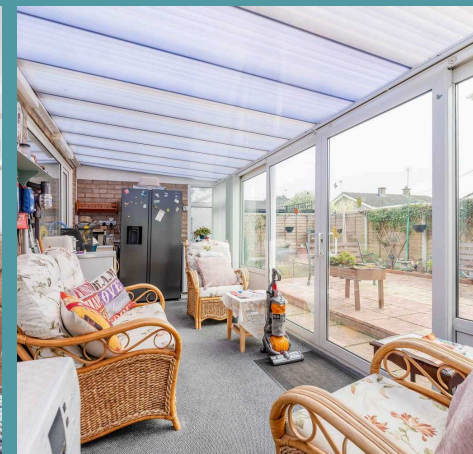
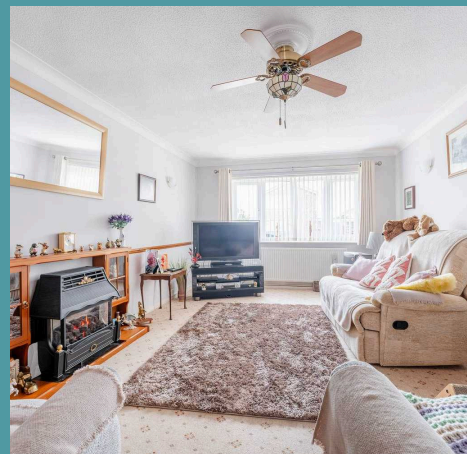
# 19 Stevens Close

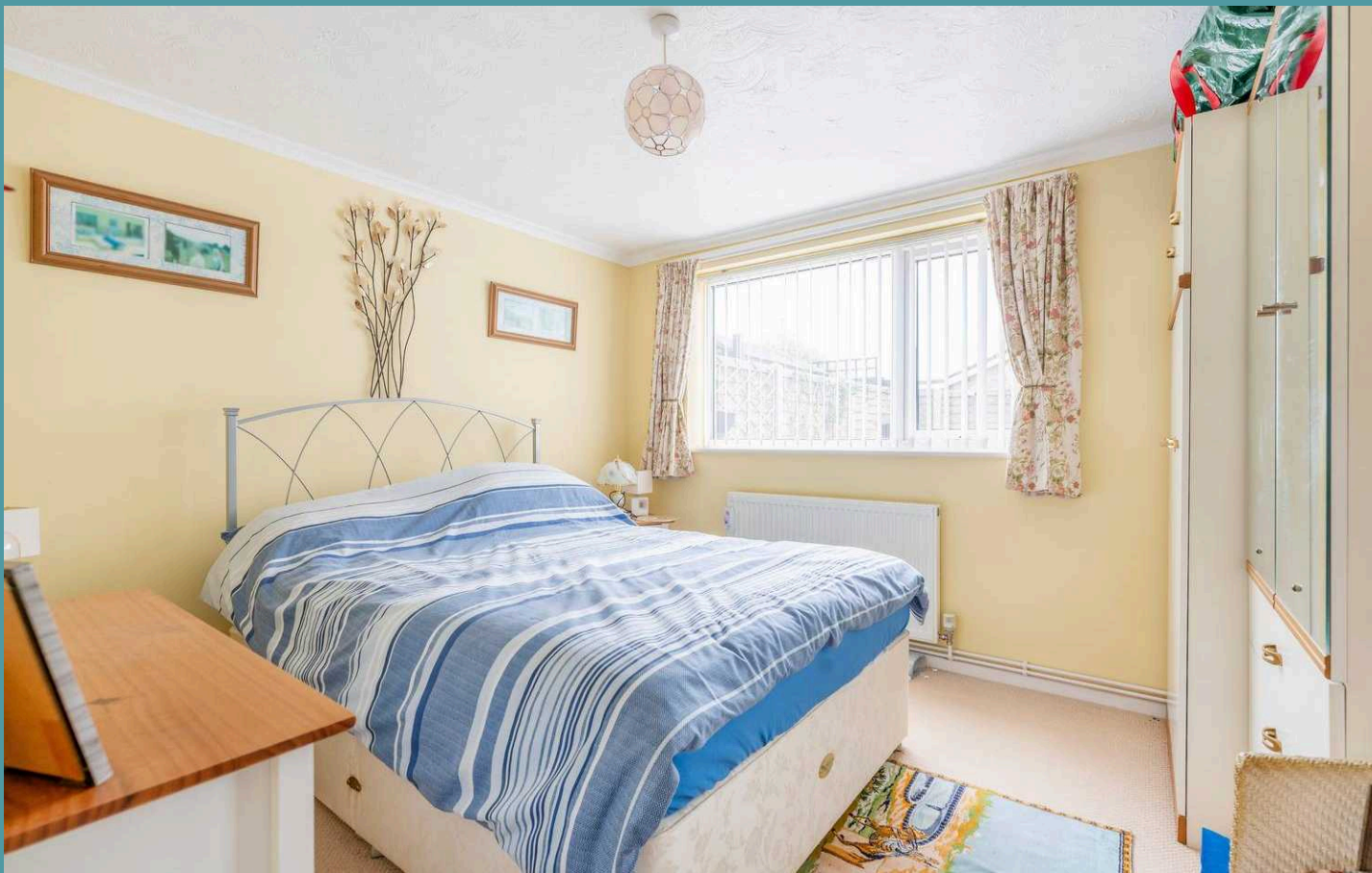
Watton, Thetford

This charming detached bungalow presents an inviting space for those seeking downsizing opportunities without compromising on comfort. The allure of single-floor living is encapsulated within this thoughtfully designed residence, providing ease and convenience at every turn. With its well-designed living spaces and serene garden setting, you would not want to miss the chance to own this beautiful home.

## LOCATION

Watton, located in the IP25 postcode area of Norfolk, England, is a charming market town known for its picturesque countryside and rich history. Surrounded by scenic landscapes, it offers a mix of modern amenities and traditional architecture. The town features local shops, parks, and community events, making it a welcoming place for residents and visitors alike. With its convenient access to larger towns and natural attractions, Watton serves as a peaceful retreat while still providing easy connectivity to urban life.





## 19 Stevens Close

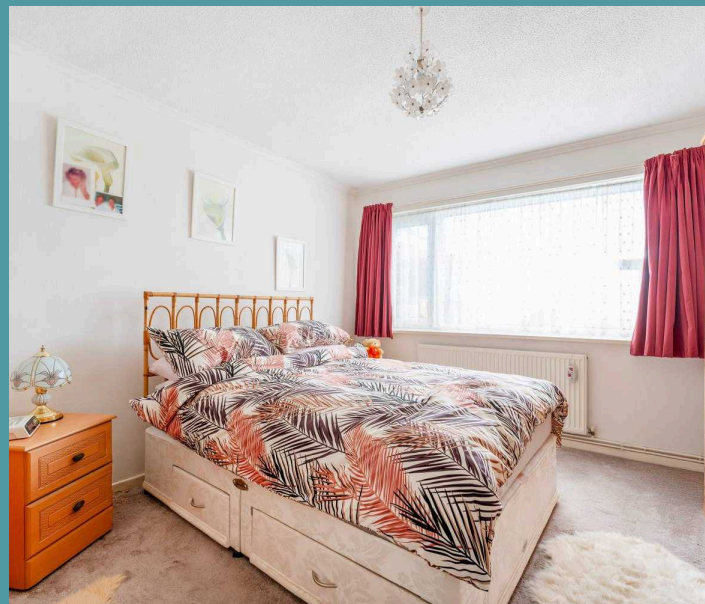
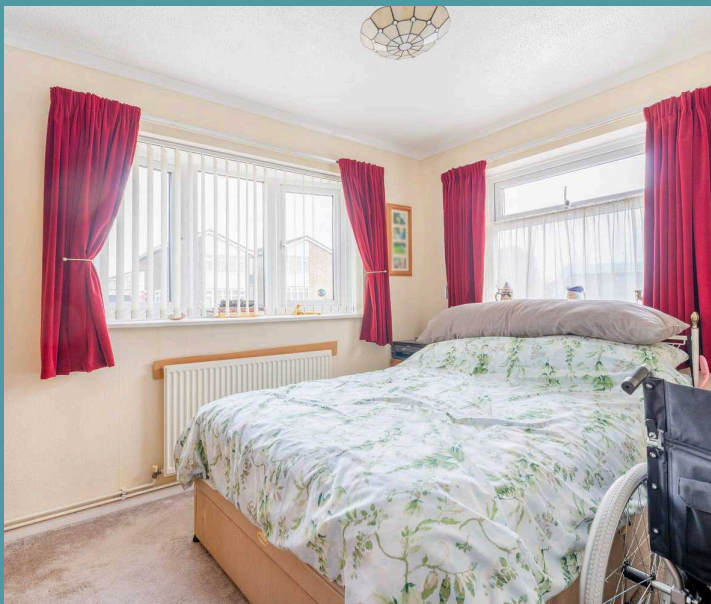
Watton, Thetford

Upon entry, you are greeted by a welcoming entrance hall. Immediately capturing your attention with its warm and inviting ambiance is the spacious sitting room, adorned with a large bay window that bathes the space in natural light, creating a wonderful space for relaxation and social gatherings alike. The kitchen is fitted with units and appliances to be able to cook your favourite meals. Offering plenty of storage and counter-top space for meal preparation. The presence of a conservatory extends the reception space, allowing you to enjoy the outdoors within the comfort of your home.

The property features three well-appointed bedrooms and a dressing room, each thoughtfully designed to offer relaxation and privacy. The front bedroom has the versatility to be a dining room, study or guest room, depending on your own requirements. A shower room completes the accommodation, offering convenience and functionality for residents.

Outside, the property features a large low maintenance garden, perfect for those who appreciate outdoor living without the hassle of extensive upkeep. The garden is fully enclosed, providing privacy and security for residents to enjoy outdoor activities or simply relax in the sunshine. A driveway provides ample off-road parking for multiple vehicles, ensuring convenience for residents and guests alike.

- Charming detached bungalow
- Suitable for someone looking to downsize

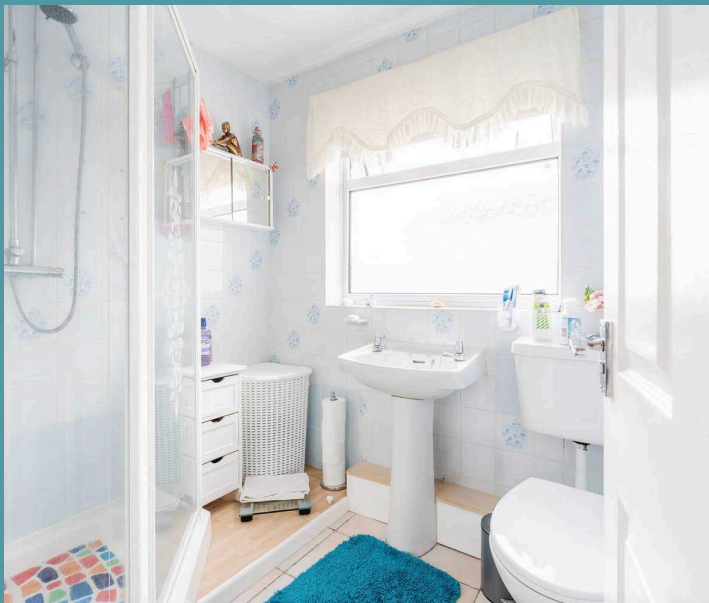




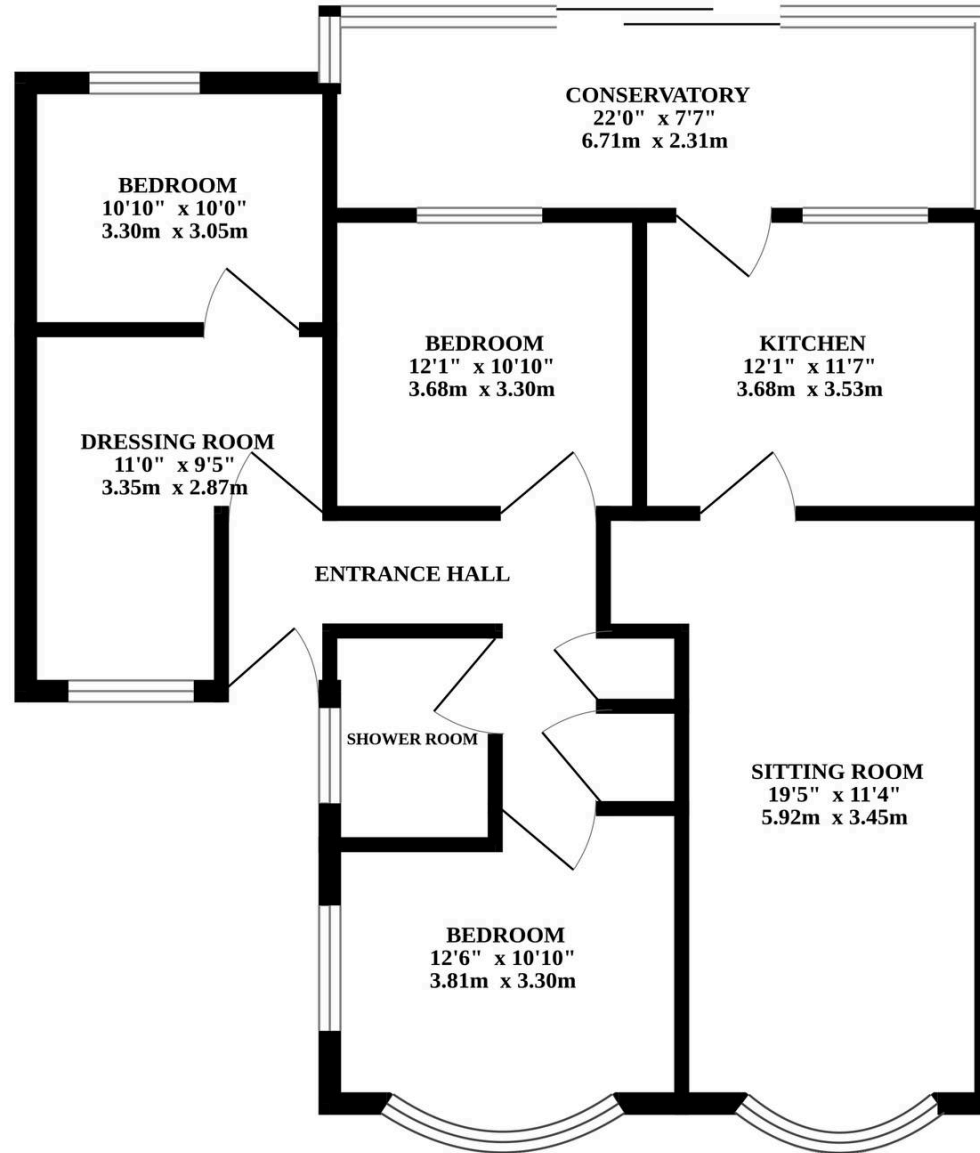
## 19 Stevens Close

Watton, Thetford

- Charming detached bungalow
- Suitable for someone looking to downsize
- Everything you need on a single floor
- Spacious sitting room with a large bay window
- Fitted kitchen to be able to cook your favourite meals
- Sun-lit conservatory offering garden views
- Three bedrooms, dressing room & a shower room
- Low maintenance garden - Fully enclosed for privacy
- Driveway providing off-road parking for all residents
- In close proximity to all local amenities and natural surroundings



# GROUND FLOOR



Whilst every attempt has been made to ensure the accuracy of the floorplan contained here, measurements of doors, windows, rooms and any other items are approximate and no responsibility is taken for any error, omission or mis-statement. This plan is for illustrative purposes only and should be used as such by any prospective purchaser. The services, systems and appliances shown have not been tested and no guarantee as to their operability or efficiency can be given.  
Made with Metropix ©2024