



Metfield California Road, California

Guide Price £550,000

Metfield California Road

California, Great Yarmouth

Introducing this exceptional four bedroom detached residence — an exquisite detached bungalow thoughtfully designed and recently constructed with the growing family in mind. Nestled in a serene setting with picturesque countryside field views and just a short walk from the coastline, this home offers both tranquility and convenience, being close to all local amenities and natural surroundings. Every aspect of the interior has been thoughtfully designed to maximise comfort and practicality, with high quality fixtures and fittings throughout. Don't miss the chance to experience all this incredible home has to offer.

LOCATION

California is a charming village located in the county of Norfolk, England. Nestled in the scenic East Anglian countryside, this quaint settlement offers a peaceful retreat with its serene surroundings and picturesque landscapes. California is known for its proximity to the stunning coastline of the North Sea, making it a popular spot for beach lovers and nature enthusiasts. The village boasts a mix of traditional cottages and modern amenities, providing a perfect blend of old-world charm and contemporary comfort. With its friendly community, beautiful natural scenery, and convenient access to nearby towns and attractions, California, Norfolk, is a delightful destination for residents and visitors alike.

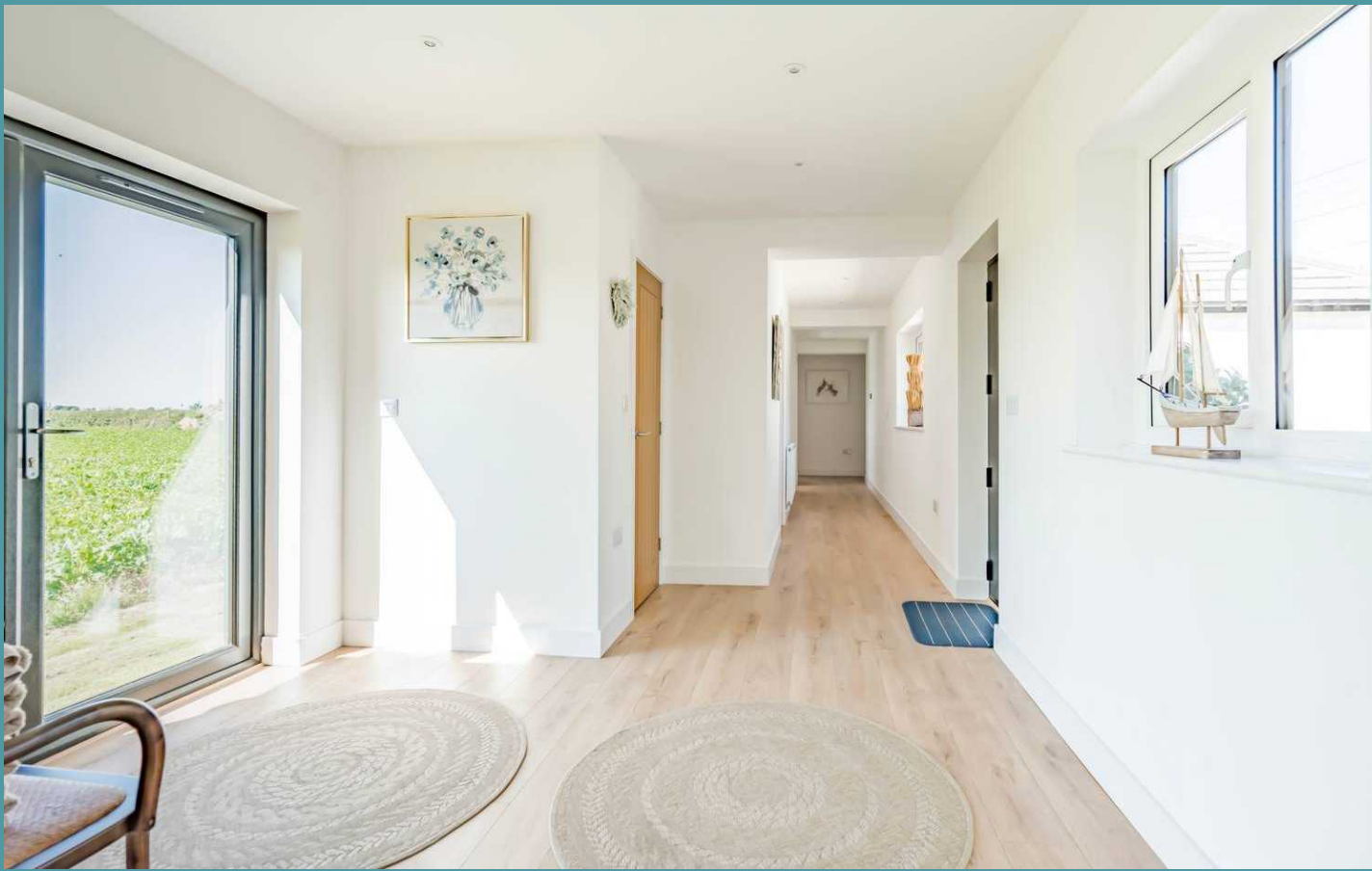


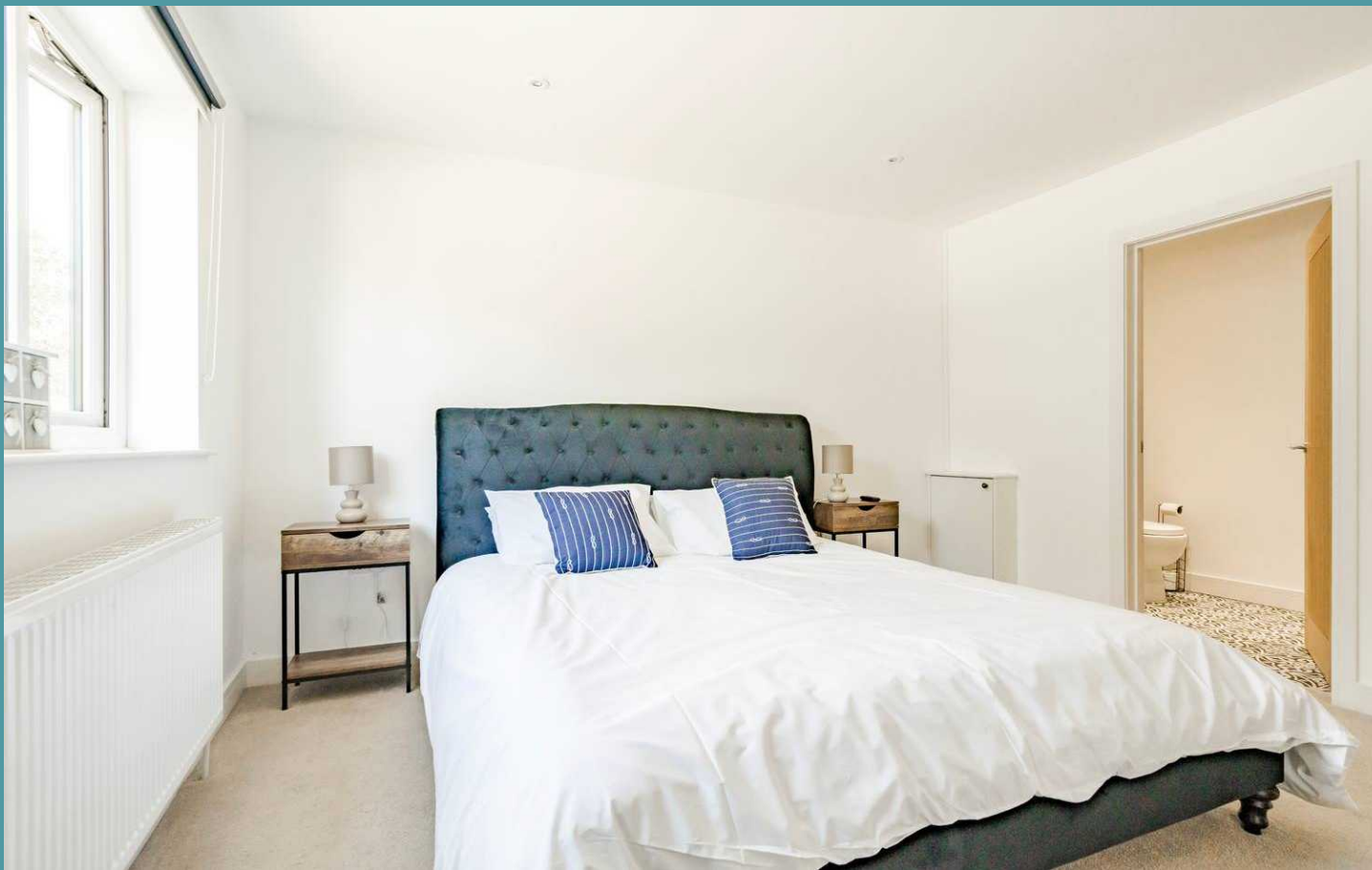
Metfield California Road

California, Great Yarmouth

From the moment you step inside, you will be greeted by the impeccable standard of presentation that flows throughout, featuring high-quality fixtures and fittings that enhance the overall appeal of the home. The property offers picturesque countryside fields views, setting the scene for a peaceful and tranquil lifestyle, while being conveniently located just a short distance from the coast, offering the perfect balance between rural charm and coastal convenience.

At the heart of the home lies an incredible open-plan kitchen/dining/living room, ensuring effortless interaction when hosting occasions and everyday family living. It is well-equipped with high quality units and integrated appliances to enhance your cooking experience. With the focal point of an incredible central island, encouraging intimate gatherings whilst enjoying your home-cooked meals. The light-filled living area is perfect for showcasing your most comfortable furniture, allowing you to relax and unwind whilst taking in the exceptional field views. The thoughtful layout also includes a utility room, ensuring practicality is at the forefront of the design.





Metfield California Road

California, Great Yarmouth

Accommodation comprises four well-appointed bedrooms, each thoughtfully designed to offer relaxation and privacy. The master bedroom flaunts a private ensuite, adding a luxury yet convenient touch to your everyday lifestyle. The fourth bedroom has the versatility to be an office, playroom or dressing room, depending on your own requirements. The bathroom comprises of a modern four piece suite, accommodating all residents in the household.

Outside, the property features a west-facing garden that presents a blank canvas ready for you to make your own - whether it be creating a relaxing oasis or an outdoor entertainment space. A driveway provides off-road parking for multiple vehicles, ensuring convenience for residents and guests alike.

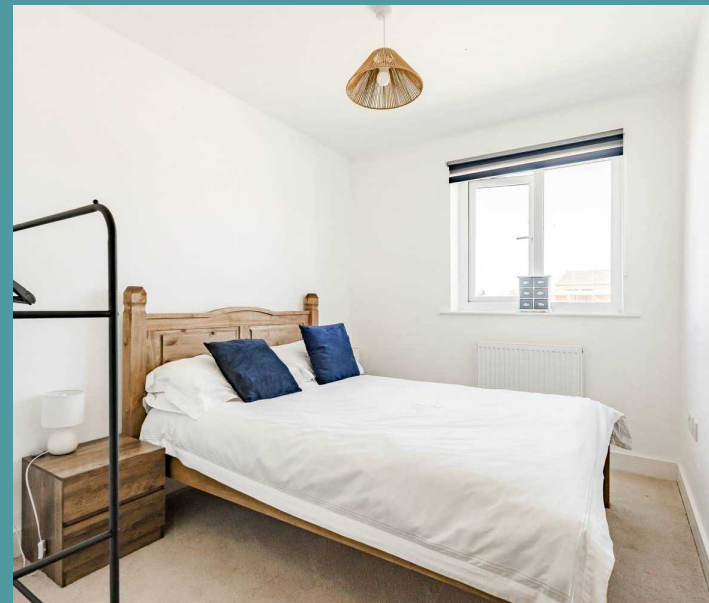
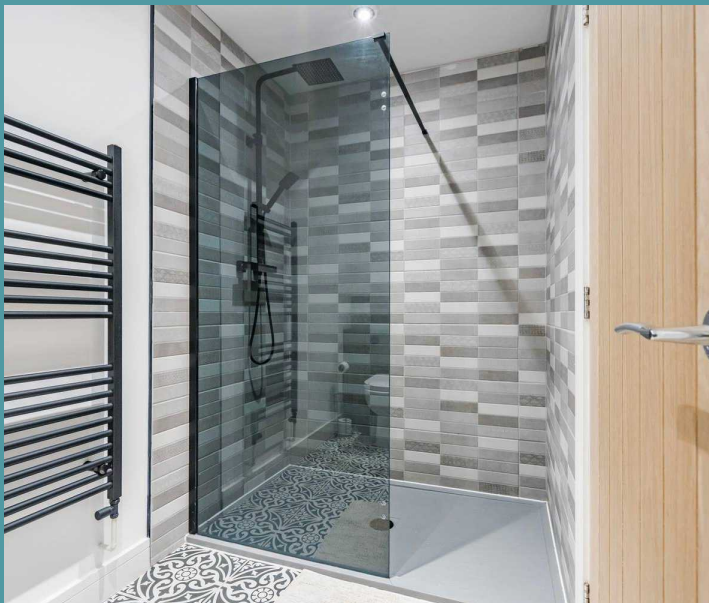
AGENTS NOTES

We understand that this property is freehold.

Connected to mains water, electricity and drainage.

Heating system - Oil

Council Tax Band: C

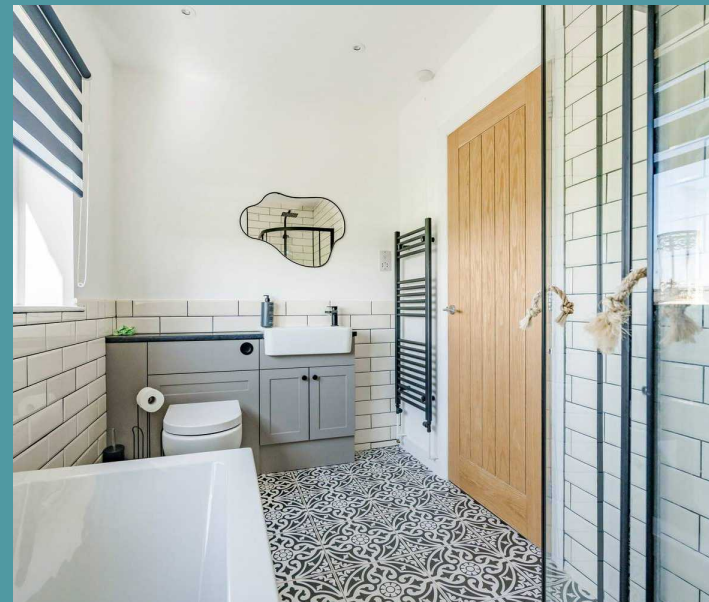




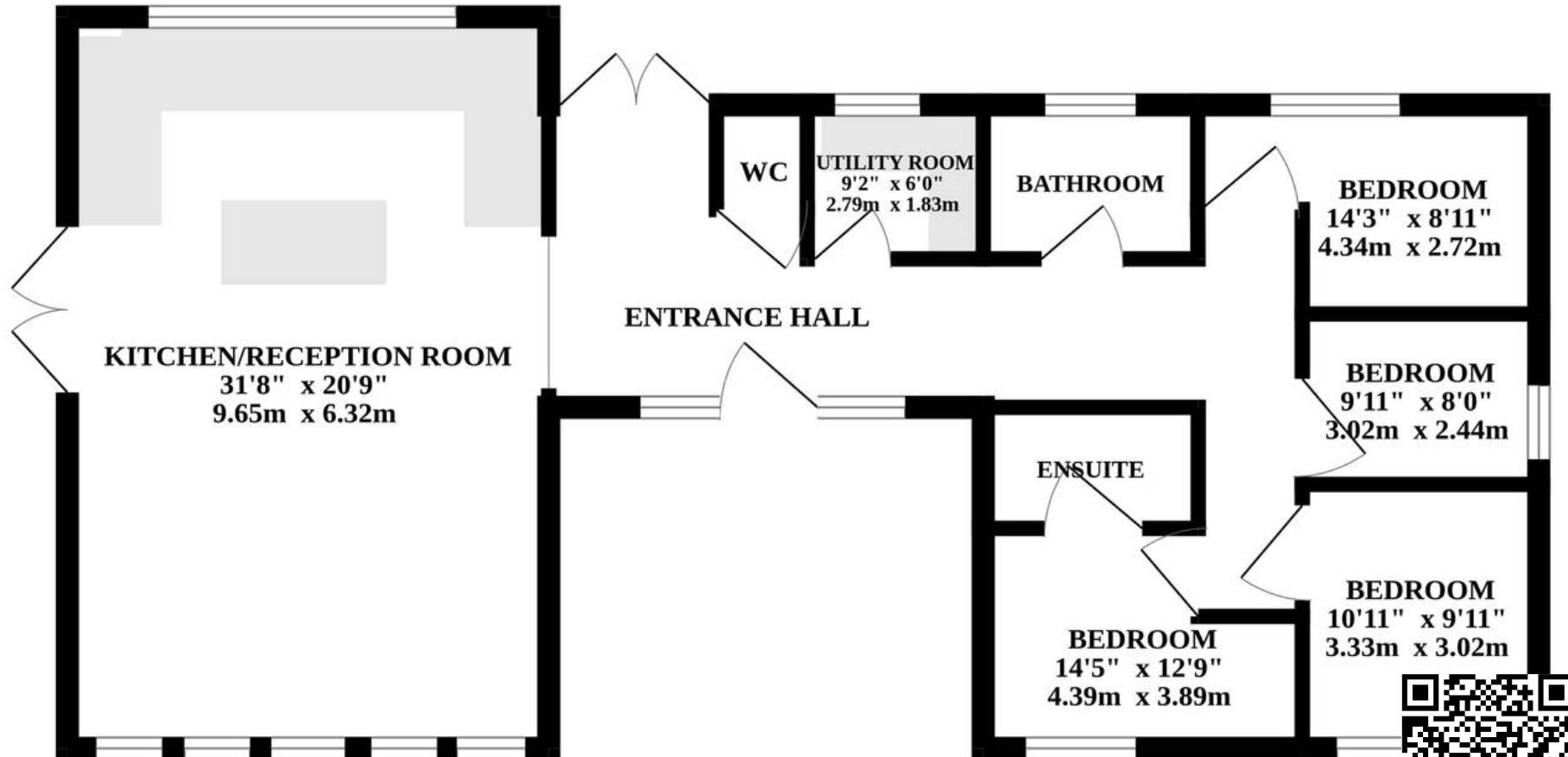
Metfield California Road

California, Great Yarmouth

- EXQUISITE DETACHED BUNGALOW - NEWLY BUILT
- INCREDIBLE COASTAL HOLIDAY LET
- CHAIN FREE - SPACIOUS LAYOUT THAT IS PERFECT FOR FAMILY LIVING
- PRESENTED TO AN IMMACULATE STANDARD THROUGHOUT - HIGH QUALITY FIXTURES AND FITTINGS
- REMARKABLE OPEN-PLAN KITCHEN/DINING/LIVING ROOM - UTILITY ROOM
- FOUR BEDROOMS, ONE ENSUITE, A WC AND A FAMILY BATHROOM
- COUNTRYSIDE FIELDS VIEWS
- SHORT DISTANCE TO THE COAST
- WEST-FACING GARDEN - READY FOR YOU TO MAKE YOUR OWN
- DRIVEWAY PROVIDING OFF-ROAD PARKING



GROUND FLOOR



Whilst every attempt has been made to ensure the accuracy of the floorplan contained here, measurements of doors, windows, rooms and any other items are approximate and no responsibility is taken for any error, omission or mis-statement. This plan is for illustrative purposes only and should be used as such by any prospective purchaser. The services, systems and appliances shown have not been tested and no guarantee as to their operability or efficiency can be given.
Made with Metropix ©2024