

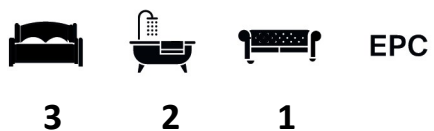


Elsworthy Road, NW3 3BU

**WAYNE
& SILVER**

Elsworthy Road, NW3 3BU

A stunning and bright three double bedroom apartment set over 1250 sq ft on the first floor of a period conversion situated on a tree lined street in Primrose Hill. The property has been finished to a very high specification throughout and comprises a large reception room, fully fitted kitchen, master bedroom with en-suite shower room, two further double bedrooms and a family bathroom. Located 0.1 miles to the green spaces of Primrose Hill and 0.7 miles to Chalk Farm (Northern line) and 0.5 miles to Swiss Cottage (Jubilee line) underground stations. The property also benefits from one off street parking space and access to a wonderfully landscaped private communal garden of over an acre.



Guide price: £1,475 Per Week

Local Authority: Camden

Council Tax Band: G

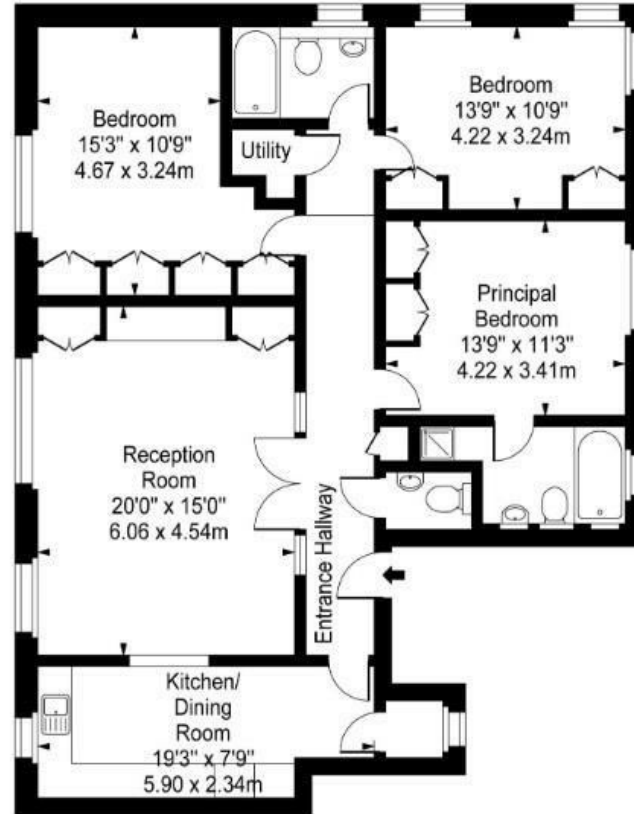








Elsworthy Road,
Primrose Hill, NW3



First Floor

Approx Gross Internal Area 1277 Sq Ft - 118.59 Sq M

41 Heath Street
Hampstead
London
NW3 6UA

We would be delighted to tell you more
020 7431 4488
info@wayne-silver.com

wayne-silver.com

Important Notice: Wayne & Silver, its clients and any joint agents give notice that 1: They are not authorised to make or give any representations or warranties in relation to the property either here or elsewhere, either on their own behalf or on behalf of their client or otherwise. They assume no responsibility for any statement that may be made in these particulars. These particulars do not form part of any offer or contract and must not be relied upon as statements or representations of fact. 2: Any areas, measurements or distances are approximate. The text, photographs and plans are for guidance only and are not necessarily comprehensive. It should not be assumed that the property has all necessary planning, building regulation or other consents and Wayne & Silver have not tested any services, equipment or facilities. Purchasers must satisfy themselves by inspection or otherwise.