

## **Furness Close, Ipswich, Suffolk, IP2 9YA**

**Offers in Excess of: £290,000**



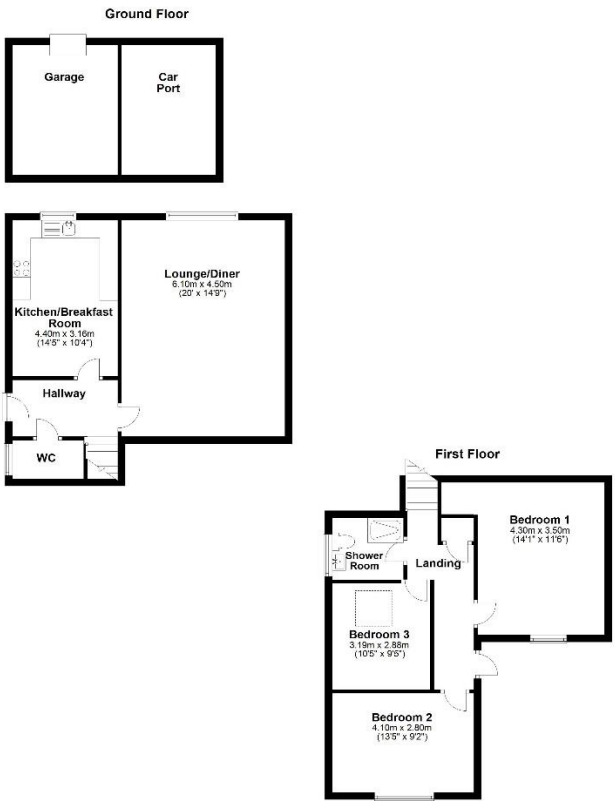
Palmer & Partners

- No Onward Chain
- Large Detached House
- Three Double Bedrooms
- 20ft Lounge
- Car Port & Garage
- Ample Off-Road Parking

This nicely presented and deceptively large three bedroom detached house, situated towards the south west side of Ipswich, offers ample light and airy accommodation, car port and garage, off-road parking for several cars on block-paved driveway, ramp and steps up to the front door, and is being sold with no onward chain. As agents, we recommend the earliest possible internal viewing to fully appreciate the quality and size of the accommodation on offer which comprises entrance hall, kitchen / breakfast room, 20ft lounge with views across to Belstead Brook, modern ground floor cloakroom, first floor landing, modern shower room, and three double bedrooms.

The county town of Ipswich offers a range of local amenities including schools, university, shops, doctors, dental surgeries, hospital, two theatres, parks including the popular Orwell Country Park, recreational facilities, and mainline railway station providing direct links to London Liverpool Street Station. The vibrant waterfront has undergone an extensive rebuilding and gentrification programme and now boasts some fashionable bars and restaurants, together with the University Suffolk.

Council tax band: D



**Disclaimer**  
 Every attempt has been made to ensure accuracy, however these property particulars are approximate and for illustrative purposes only. They have been prepared in good faith and they are not intended to constitute part of an offer of contract. We have not carried out a structural survey and the services, appliances and specific fittings have not been tested. All photographs, measurements, floor plans and distances referred to are given as a guide only and should not be relied upon for the purchase of any fixture or fittings. Lease details, service charges and ground rent (where applicable) are given as a guide only and should be checked prior to agreeing a sale.