

Bolton Lane, Ipswich, Suffolk, IP4 2BX

Guide Price: £325,000



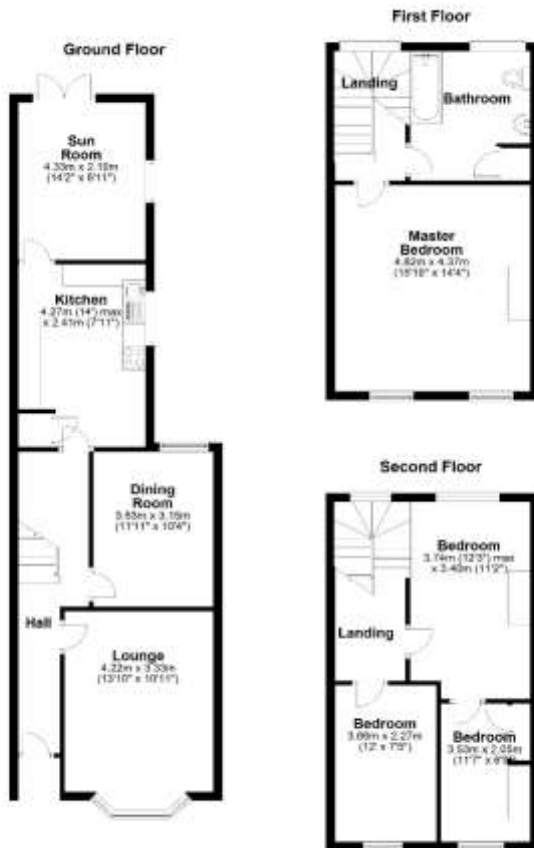
- Victorian Townhouse
- Three / Four Bedrooms
- Three Reception Rooms
- First Floor Bathroom
- Partial Secondary Glazing
- Fully Enclosed Rear Garden

This three / four bedroom Victorian townhouse, situated towards the desirable east side of Ipswich within the Northgate School catchment (subject to availability) and close to Christchurch Park, benefits from fully enclosed rear garden, partial secondary glazing and gas central heating. As agents, we recommend the earliest possible internal viewing to appreciate the quality of accommodation on offer which comprises entrance hall, lounge, dining room, kitchen, sun room, first floor landing, large family bathroom, master bedroom, second floor landing, and three further bedrooms.

The county town of Ipswich offers a range of local amenities including schools, university, shops, doctors, dental surgeries, hospital, two theatres, parks including the popular Orwell Country Park, recreational facilities, and mainline railway station providing direct links to London Liverpool Street Station. The vibrant waterfront has undergone an extensive rebuilding and gentrification programme and now boasts some fashionable bars and restaurants, together with the University of Suffolk.



Council tax band: D



Disclaimer

Every attempt has been made to ensure accuracy, however these property particulars are approximate and for illustrative purposes only. They have been prepared in good faith and they are not intended to constitute part of an offer of contract. We have not carried out a structural survey and the services, appliances and specific fittings have not been tested. All photographs, measurements, floor plans and distances referred to are given as a guide only and should not be relied upon for the purchase of any fixture or fittings. Lease details, service charges and ground rent (where applicable) are given as a guide only and should be checked prior to agreeing a sale.