



Duke Road, London, W4
Guide Price £1,800,000

WHITMAN & CO.
SALES · LETTINGS · COMMERCIAL



This beautiful Victorian house, securely positioned mid-terrace in the highly sought-after Glebe Estate, was extensively rebuilt and renovated by the current owners in 2023 to an immaculate standard. The property boasts a 27' through reception room, a meticulously designed 22' kitchen/dining room fitted with high-quality hand-built cabinets, a downstairs cloakroom, and a utility room. There are four double bedrooms, two with en suite bathrooms, and an additional family bathroom, all featuring extensive built-in storage. Outside, the front offers a brick-built bike store, while the rear showcases a stunning private west-facing landscaped garden with low-maintenance features, brick-built storage sheds, and a lit BBQ area. The house benefits from modern upgrades, including a new boiler, underfloor heating throughout with zoned Nest heating controls, complete rewiring, power points in the front and rear gardens, cabling for an alarm system, a Sonos sound system, motorized curtains and blinds, additional insulation for external walls, and engineered oak wooden flooring. Ideally located, the property is less than a four-minute walk to the vibrant shops, cafes, and restaurants of Chiswick, as well as Chiswick House and Gardens. It offers easy access to central London via the A4/M4, the North and South Circulars, and the M25. Turnham Green tube station is also just a short walk away.



Duke Road, W4

Approximate Gross Internal Area
171.40 sq m / 1845 sq ft
(Including Eaves Storage)

Eaves Storage
2.95 sq m / 32 sq ft

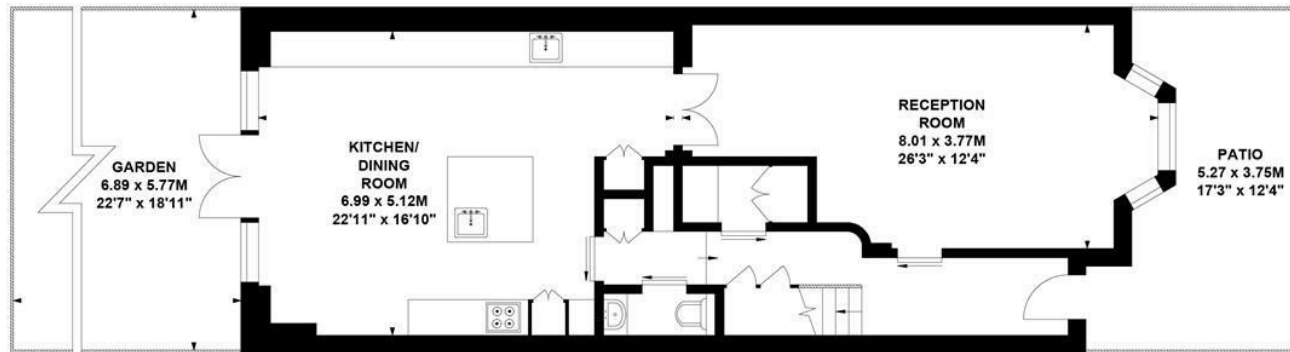


Key :
CH - Ceiling Height



SECOND FLOOR

FIRST FLOOR



GROUND FLOOR

Not to scale, for guidance only and must not be relied upon as a statement of fact.
All measurements and areas are approximate only

- Sought after Glebe Estate
- Immaculately Presented
- West-Facing Landscaped Garden

- Four Beds
- Three Baths
- Fantastic Transport Links

Tenure - Leasehold
Local Authority - Hounslow
Council Tax - Band F

