

Location:

Stanley Gardens is centrally located close to the amenities of Acton and Shepherd's Bush. Both Acton Central and East Acton stations are close by for links to and from central London.

Key points:

- 3 Double bedrooms
- Adjacent to Acton Park
- Tall Ceilings
- 858 sqft
- Fantastic light in to the apartment
- Modern apartment
- Open plan kitchen/living area
- Walking distance to Churchfield Road

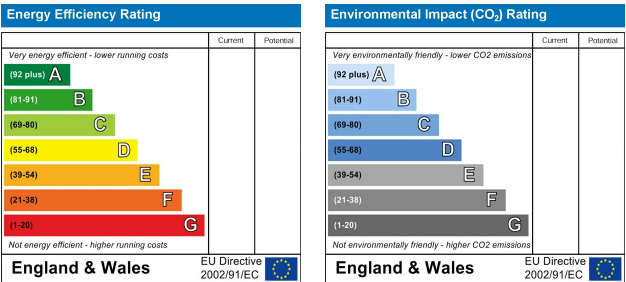
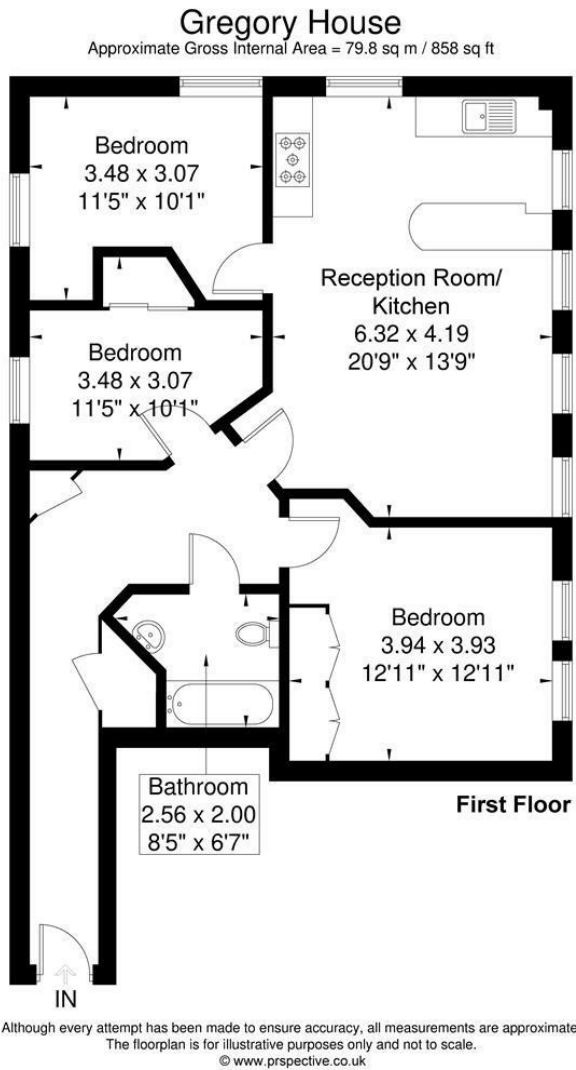
Do Better:

Acton
sales@astonrowe.co.uk

57-59 Churchfield Road,
Acton, London, W3 6AY

020 8992 3600

Aston Rowe



Offers In Excess Of £500,000

Stanley Gardens, London W3 7RZ

- 1 Reception Rooms
- 3 Bedrooms
- 1 Bathrooms



Aston Rowe are proud to present this stunning and modern three double bedroom first floor apartment, situated in the heart of Acton, adjacent to Acton Park. This contemporary and slick property boasts unusually high ceilings throughout and an open plan kitchen/living area, as well as three double bedrooms with the master bedroom having built in wardrobes. This spacious property is minutes walk from the overground at Acton Central, walking distance from the Elizabeth Line at Acton Main Line and short bus journeys from the Central, Circle and Hammersmith and City Line and District and Piccadilly Lines. Travelling around London could not be easier from here. Offered to the market with no onward chain.

The current owner says:

Stanley Gardens is well located for Turnham Green tube station on the District & Piccadilly Lines, Acton Central for the Overground and East Acton for the Central Line.

What's better:

A three bedroom warehouse apartment in W3.

