



Hill Top, London NW11 6EE

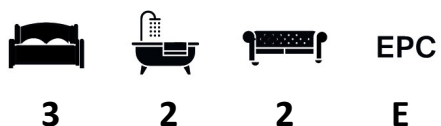
WAYNE
& SILVER

Hill Top, London NW11 6EE

Presented in immaculate decorative order throughout and refurbished to the highest of standards by the current owners is this three bedroom detached home on the North side of Hampstead Garden Suburb ideally positioned within the catchment area for Brooklands and Akiva Schools.

Arranged over just two floors the property offers bright and spacious living accommodation throughout comprising on the ground floor of a large kitchen/dining room with double doors leading to the garden, utility room, W/C, reception room and playroom/office. First floor accommodation comprising of master bedroom with fitted wardrobes and en-suite, two further bedrooms both with fitted wardrobes and separate family bathroom. Further benefits include off street parking, wooden flooring, air conditioning in every room and under floor heating.

Hill Top is just a short walk from the shopping and transport facilities that marketplace has to offer as well as a 15 minute walk to East Finchley underground station (Northern Line).



Guide price: £1,900,000

Tenure: Freehold

Local Authority: Barnet

Council Tax Band: G

WAYNE
& SILVER



WAY
& SILVER



WAYNE
& SILVER





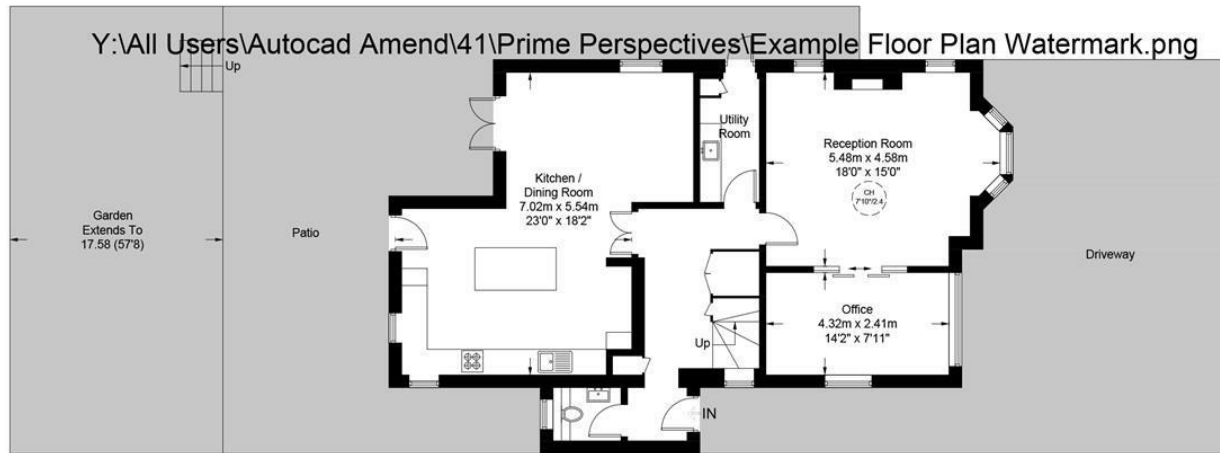
Hill Top, NW11

Approximate Gross Internal Area = 1683 sq ft / 156.3 sq m
(Including Eaves / Excluding Reduced Headroom)
Reduced Headroom = 64 sq ft / 6.0 sq m
Total = 1747 sq ft / 162.3 sq m
(Including Eaves & Reduced Headroom)



First Floor

= Reduced headroom below 1.5m / 5'0"



Ground Floor



**Certified
Property
Measurer**

This plan is for layout guidance only. Not drawn to scale unless stated. Windows and door openings are approximate. Whilst every care is taken in the preparation of this plan, please check all dimensions, shapes and compass bearings before making any decisions reliant upon them. (ID954253)

41 Heath Street
Hampstead
London
NW3 6UA

We would be delighted to tell you more
020 7431 4488
info@wayne-silver.com

wayne-silver.com