



26 Morello View, Cherry Tree Park Dean, Mill Road, Burgh Castle
£80,000

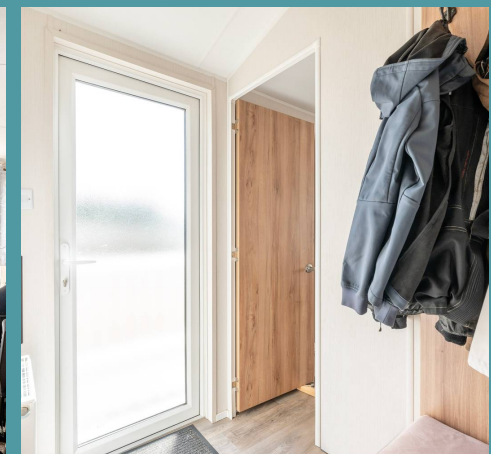
26 Morello View, Cherry Tree Park Dean, Mill Road

Burgh Castle, Great Yarmouth

Set within the serene setting of Cherry Tree Holiday Park, this luxury three bedroom holiday home presents an unparalleled opportunity for those seeking a tranquil escape within an idyllic holiday park. Surrounded by natural beauty and modern conveniences, this home is ideal for those seeking a peaceful retreat within a vibrant holiday park setting, with a wide range of fantastic facilities and family days out. Don't miss the opportunity to acquire this exceptional holiday home.

LOCATION

Burgh Castle is a historic site located in Norfolk, England, near the village of the same name. It is best known for its well-preserved Roman fort, which dates back to the 3rd century AD. The fort was part of the Saxon Shore defenses, built to protect the Roman Empire from seaborne invaders. Overlooking the River Waveney, the fort offers stunning views of the surrounding marshlands and waterways. The site is rich in history, with remnants of Roman architecture, including towering walls made of flint and mortar. Today, Burgh Castle is a popular destination for visitors interested in Roman history, archaeology, and scenic landscapes. The tranquil setting, combined with the fort's historical significance, makes it a unique and captivating location.





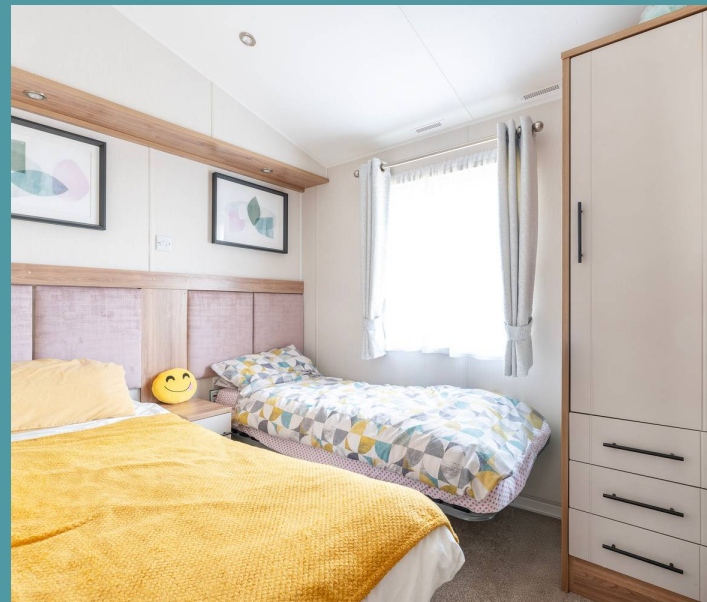
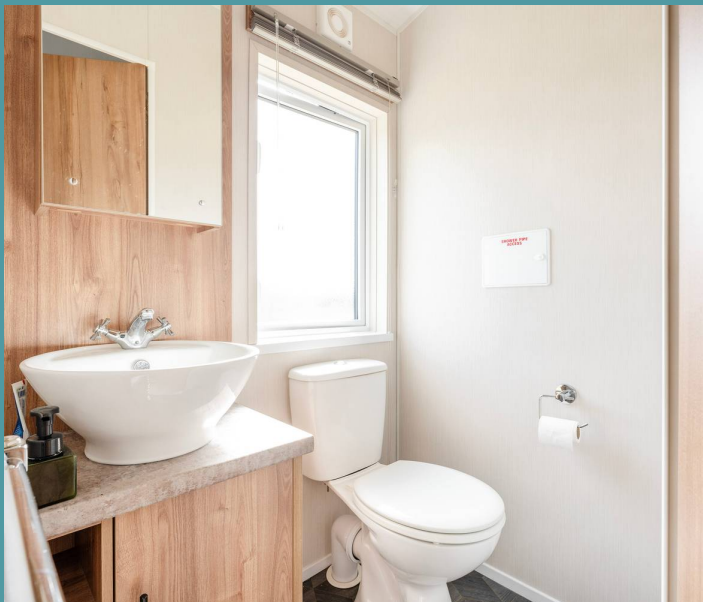
26 Morello View, Cherry Tree Park Dean, Mill Road

Burgh Castle, Great Yarmouth

Upon entering the holiday home, you are greeted by a spacious open-plan kitchen, dining, and living area, exuding a sense of modern elegance with high-quality fixtures and fittings throughout. The seamless flow of the living spaces provides a perfect setting for relaxation and entertainment, while large windows allow natural light to illuminate the interior, creating a warm and inviting ambience.

The holiday home features three well-appointed bedrooms, including an ensuite in the master bedroom, offering both comfort and privacy for residents and guests alike. Additionally, a convenient shower room ensures practicality for every-day living.

Step outside onto the large south-facing decked terrace, where residents can soak up the sun and revel in the peaceful surroundings. The expansive outdoor space provides ample room for outdoor furniture, making it an ideal spot for al fresco dining or simply enjoying a breath of fresh air. Conveniently situated next to the property is dedicated parking, ensuring ease of access for residents and visitors alike. Furthermore, the holiday park offers an array of fantastic facilities, including indoor and outdoor pools for residents to enjoy at their leisure.





26 Morello View, Cherry Tree Park Dean, Mill Road

Burgh Castle, Great Yarmouth

For those with a penchant for exploration, the Broad National Park is just a short distance away, offering endless opportunities to immerse oneself in nature and outdoor activities. Additionally, the property is in close proximity to all local amenities, ensuring convenience and accessibility for residents.

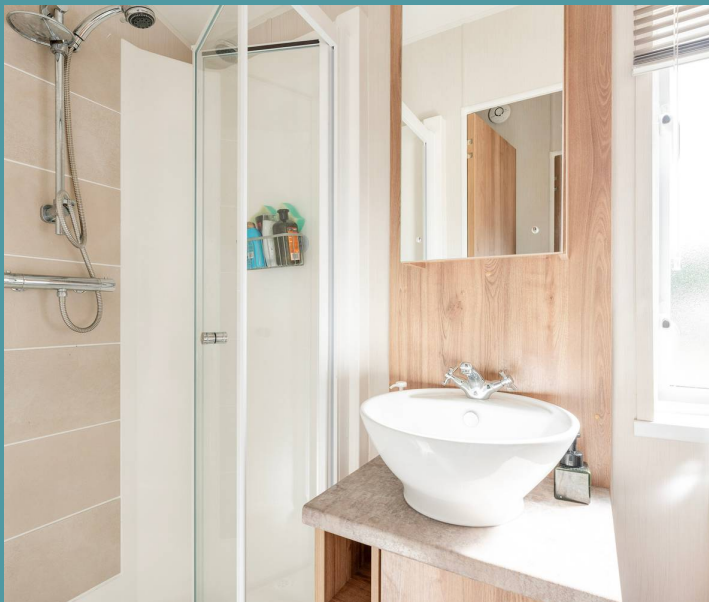
AGENTS NOTES

We understand that this property is leasehold, with 18 years left on the lease.

Ground rent - £7000 p/a

Connected to mains water, electricity and drainage.

- CHERRY TREE HOLIDAY PARK - MORELLO VIEW
- LUXURY HOLIDAY HOME
- OPEN-PLAN KITCHEN/DINING/LIVING ROOM
- HIGH-QUALITY FIXTURES AND FITTINGS
- THREE BEDROOMS, ENSUITE & A SHOWER ROOM
- LARGE SOUTH-FACING DECKED TERRACE FOR YOUR OUTDOOR FURNITURE
- DEDICATED PARKING TO THE SIDE OF THE HOLIDAY HOME
- FANTASTIC FACILITIES - INDOOR AND OUTDOOR POOLS
- SHORT DISTANCE AWAY FROM THE BROADS NATIONAL PARK
- IN CLOSE PROXIMITY TO ALL LOCAL AMENITIES AND NATURAL SURROUNDINGS



GROUND FLOOR

