

Alwyn Avenue, London, W4 4PB

Guide Price £2,095,000

**WHITMAN & CO.**

SALES · LETTINGS · COMMERCIAL



- Period family home
- South-facing landscaped garden
- Stunning kitchen/family room
- Fully refurbished and extended
- Four beds/four baths
- Close to numerous amenities

Tenure - Freehold  
Local Authority - Hounslow  
Council Tax - Band G

## THE PROPERTY

An immaculately presented period property located on this sought after residential street moments from Chiswick High Road. The house has been fully refurbished and extended and comprises a front reception room with bay window, stunning south-facing kitchen/family room opening onto a landscaped south-facing garden, four bedrooms, four bathrooms (3 ensuite), cloakroom, extensive built-in storage throughout and eaves storage. Alwyn Avenue is a 4-5 minute walk from Chiswick High Road's shops, cafes and restaurants and close to a number of local parks, including Chiswick House and Grounds and the river. Transport links include Chiswick Park and Turnham Green stations, local bus routes and the A4/M4 for routes in and out of London.

## SITUATION

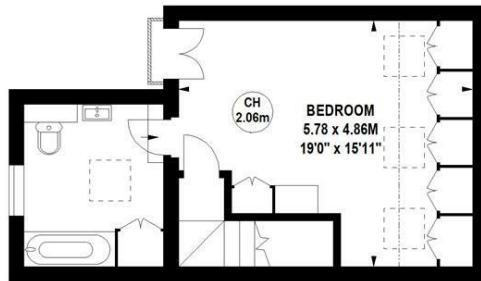


### Alwyn Avenue, W4

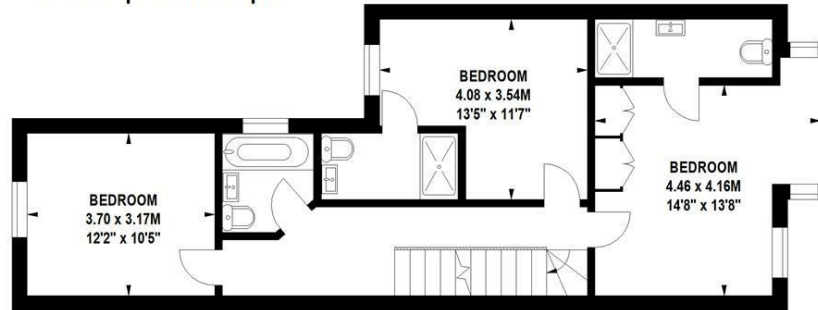
Approximate gross internal area

183.20 sq m / 1972 sq ft

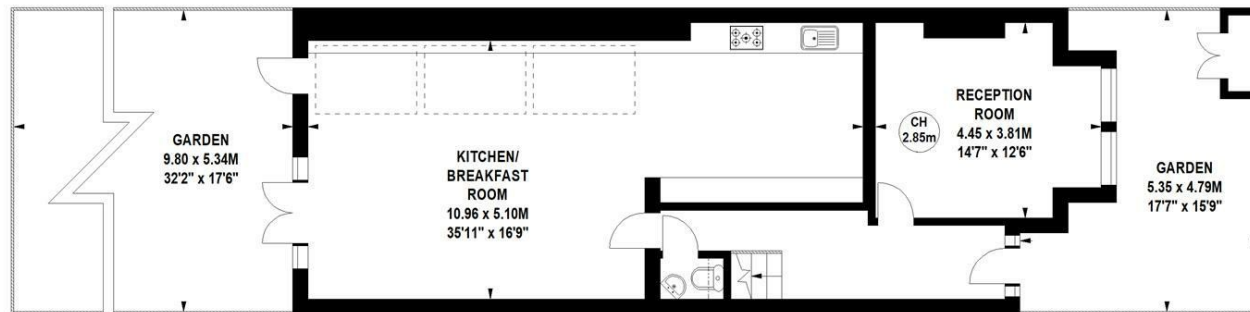
Key :  
CH - Ceiling Height



Second Floor



First Floor



Ground Floor

Not to scale, for guidance only and must not be relied upon as a statement of fact.  
All measurements and areas are approximate only

5-7 Turnham Green Terrace, Chiswick, London, W4 1RG

Tel 020 8747 8800

E-mail [sales@whitmanandco.com](mailto:sales@whitmanandco.com)

Website [www.whitmanandco.com](http://www.whitmanandco.com)