



Dale Street, London, W4 2BL

Guide Price £1,250,000

WHITMAN & CO.

SALES · LETTINGS · COMMERCIAL

- Sought after Glebe Estate location
- Perfect position at the north end of Dale Street
- No chain
- Current planning permission to extend/remodel
- Three/four bedrooms
- 25' reception room

Tenure - Freehold
Local Authority - Hounslow
Council Tax - Band F

THE PROPERTY

An exceptionally well positioned 3/4 bedroom Glebe Estate house with the added benefit of current detailed planning permission to extend/remodel. The accommodation comprises three/four bedrooms, bathroom and shower room, 25' reception room, 20' kitchen/breakfast room, cloakroom, private 24' garden. Ideally located at the north end of Dale street, offering close proximity to Turnham Green Tube station and the extensive shops, bars and restaurants on Chiswick High Road. No chain.

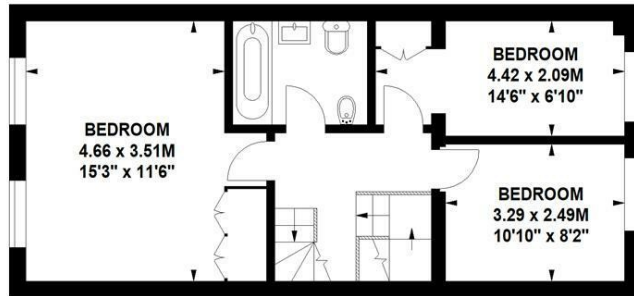
SITUATION



Dale Street, W4

Approximate gross internal area
133.78 sq m / 1440 sq ft
(Including Eaves Storage)

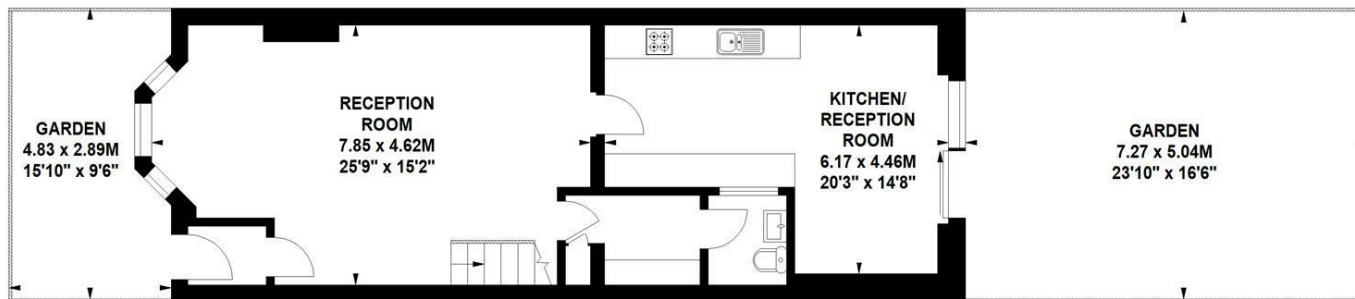
Eaves Storage 4.09 sq m / 44 sq ft



First Floor



Second Floor



Ground Floor

Not to scale, for guidance only and must not be relied upon as a statement of fact.
All measurements and areas are approximate only

5-7 Turnham Green Terrace, Chiswick, London, W4 1RG

Tel 020 8747 8800

E-mail sales@whitmanandco.com

Website www.whitmanandco.com