



30 Wyatt Road, Highbury, London, N5 2JU

£950 Per Week



## 30 Wyatt Road, Highbury N5 2JU

A bright and extremely spacious 2 story mid terraced house comprising 3 double bedrooms- 2 reception rooms- large eat-in kitchen/diner- bathroom- separate downstairs WC and private rear garden.



Council Tax Band: C

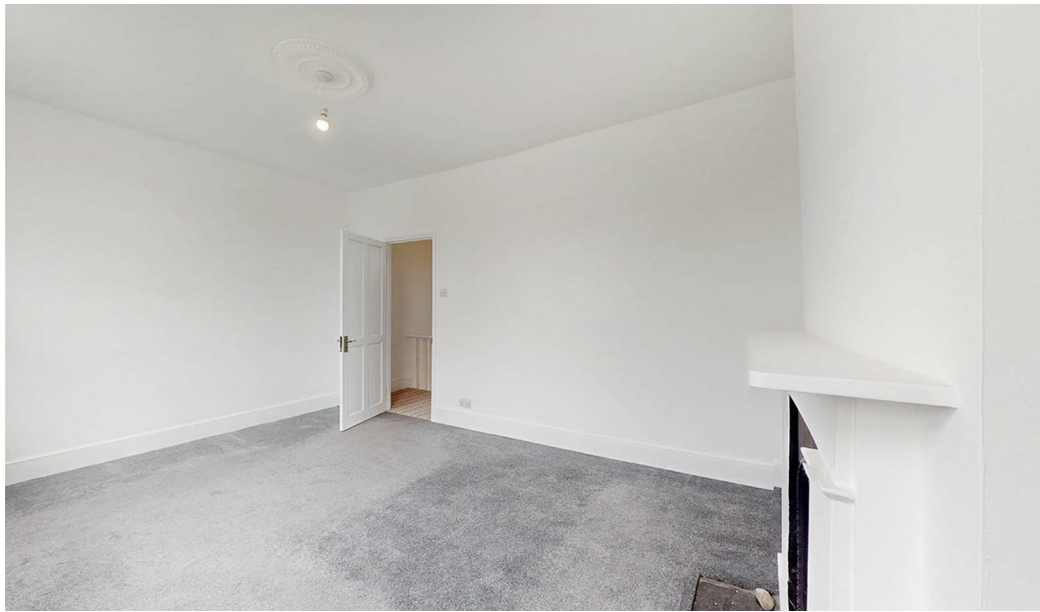
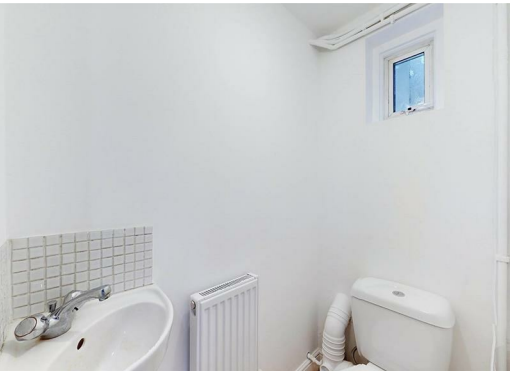


### Full description

A bright and extremely spacious 2-story mid-terraced house comprising 3 double bedrooms - 2 reception rooms - large eat-in kitchen/diner - bathroom - separated downstairs WC and private rear garden. The property is well situated off Mountgrove Road and is close to Arsenal Underground Station and all of the local amenities. Available for viewing on 10th April 2024 at 12:00pm.







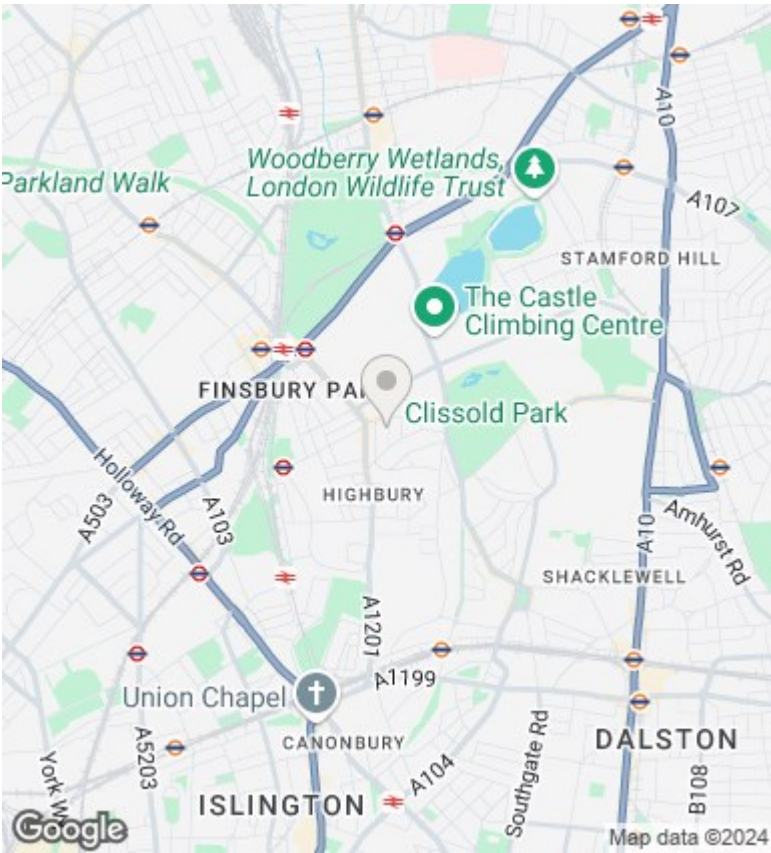
Directions

Viewings

Viewings by arrangement only. Call 02073593191 to make an appointment.

Council Tax Band

C



Energy Efficiency Rating		
	Current	Potential
Very energy efficient - lower running costs		
(92 plus) <b>A</b>		
(81-91) <b>B</b>		
(69-80) <b>C</b>		
(55-68) <b>D</b>		
(39-54) <b>E</b>		
(21-38) <b>F</b>		
(1-20) <b>G</b>		
Not energy efficient - higher running costs		
England & Wales		
EU Directive 2002/91/EC		