



Palmer & Partners



9 Somerset Way, Clacton-on-Sea, Essex, CO15 2QP Guide Price: £295,000

9 Somerset Way, Jaywick, Clacton-on-Sea, Essex, CO15 2QP

GUIDE PRICE £295,000 - £310,000

This detached bungalow is located on a corner plot in the sought-after Tudor development. Situated just a short stroll away from the beautiful beach and local shops, this property offers a prime location for potential buyers.

Inside, the bungalow features a generously sized lounge, a well-appointed kitchen, two spacious double bedrooms, a conservatory, and a modern bathroom.

In addition to its interior features, the property also offers ample off-road parking at the front, complete with a newly installed driveway. The bungalow further benefits from a private rear garden and a wrap-around garden at the front.

Furthermore, the vendor has expressed a willingness to include several pieces of furniture and fittings with the property, adding potential value and convenience for the new owners. This offering presents an attractive opportunity for those seeking a well-appointed home in a desirable location.

Accommodation & Amenities

- Detached Bungalow
- Corner plot
- Generously sized lounge
- Modern Kitchen
- Two Double Bedrooms
- Conservatory
- Modern Bathroom
- Ample Off-Road Parking

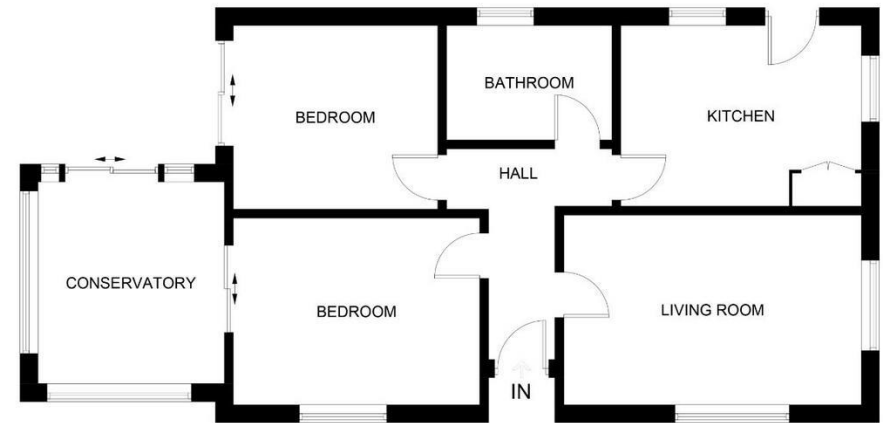


Illustration for identification purposes only, measurements are approximate, not to scale.

Lounge 16'3" x 13'4"

Kitchen 12'8" x 9'11"

Conservatory 9'3" x 9'1"

Bedroom 1 10'11" x 9'11"

Bedroom 2 12'8" x 10'0"

Energy Efficiency Rating		Current	Potential
<i>Very energy efficient - lower running costs</i>			
(92+)	A		
(81-91)	B		
(69-80)	C		73
(55-68)	D		
(39-54)	E	41	
(21-38)	F		
(1-20)	G		
<i>Not energy efficient - higher running costs</i>			
England, Scotland & Wales		EU Directive 2002/91/EC	



