



## A LUXURIOUS PURPOSE BUILT TWO BEDROOM APARTMENT

Woodlands, Ducks Hill Road, Northwood, Middlesex HA6 2SQ

**ROBSONS**



## A LUXURIOUS PURPOSE BUILT TWO BEDROOM APARTMENT

Woodlands, Ducks Hill Road, Northwood,  
Middlesex HA6 2SQ

**LUXURIOUS MID FLOOR APARTMENT •  
LARGE RECEPTION ROOM • FITTED KITCHEN/  
DINING ROOM • UTILITY ROOM • PRINCIPLE  
BEDROOM WITH EN-SUITE • FURTHER  
DOUBLE BEDROOM • BATHROOM • LARGE  
BALCONY ACCESSED VIA THE LIVING ROOM •  
ALLOCATED PARKING • LIFT TO ALL FLOORS**

### Description

This spacious two bedroom, two bathroom luxurious purpose built apartment presents nearly 1400 sq ft of accommodation. The apartment has the advantage of a large balcony accessed via the living room that offers an elevated view of the mature garden and woodland beyond.

The property was built by renowned builders Kebbell Homes within the past ten years. Further benefits include allocated parking and lift to all floors.







### Location

Northwood provides a range of shopping facilities including Waitrose supermarket, a variety of restaurants and other amenities with the Metropolitan Line station providing access to Baker Street and the City. There is a plethora of state and private schooling together with a wide choice of recreational facilities, which include golf courses and fitness centres. The M1, M40 and M25 motorways are also accessible.

### Additional Information

Tenure: Share of Freehold

Service Charge: £3,010 pa

Local Authority: London Borough of Hillingdon

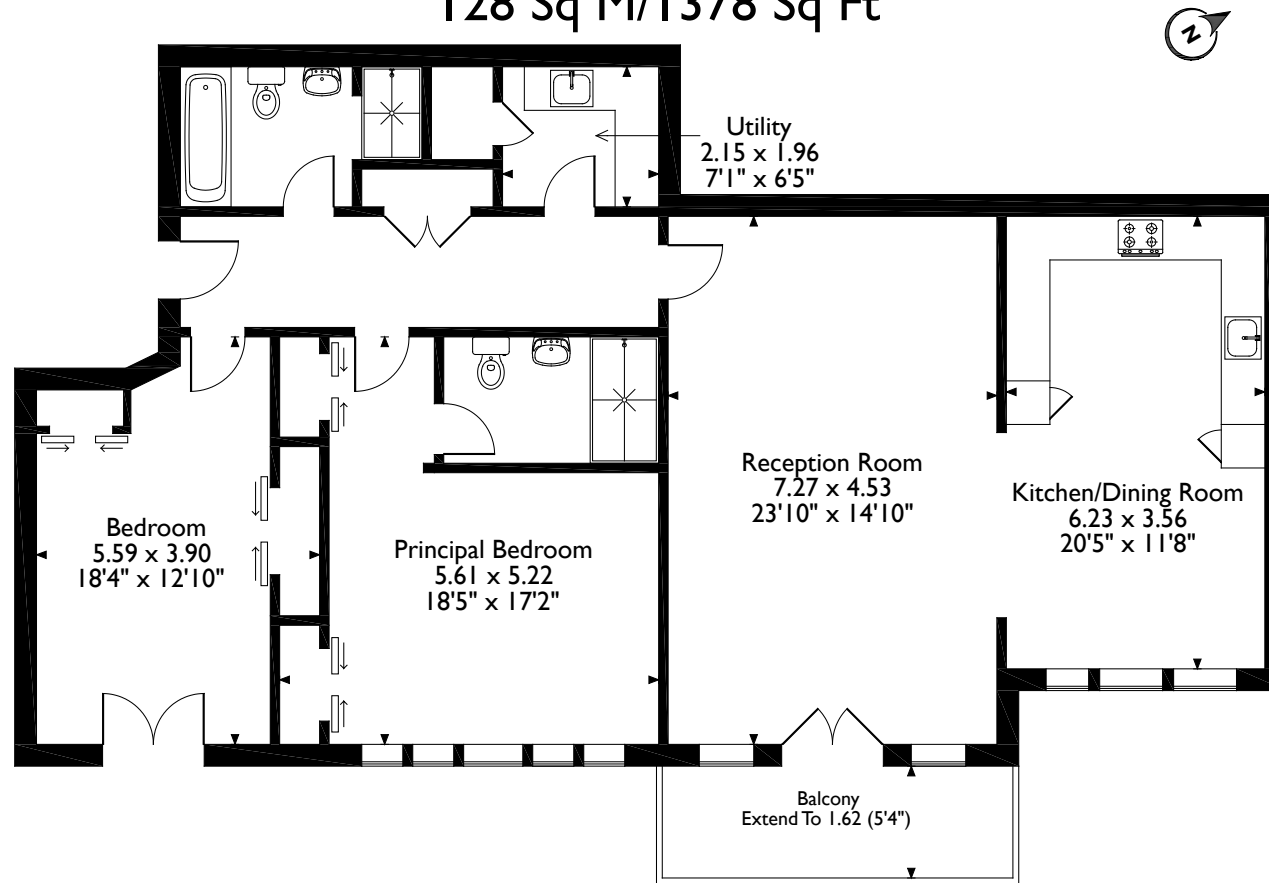
Council Tax: Band G

Energy Efficiency Rating: Band B





Ducks Hill Road, Northwood, Middlesex  
Approximate Gross Internal Area  
128 Sq M/1378 Sq Ft



**Fourth Floor**

Please note that the location of doors, windows and other items are approximate and this floorplan is to be used for illustrative purposes only. Unauthorized reproduction is prohibited.

**ROBSONS**

Address: 7 Clive Parade, Northwood, Middlesex HA6 2QF  
Tel: 01923 835355 northwood@robsonswb.com

[www.robsonswb.com](http://www.robsonswb.com)

[www.  
the  
londonoffice.co.uk](http://www.the-londonoffice.co.uk)  
40 ST JAMES'S PLACE SW1

Important notice: Robsons, their clients and any joint agents give notice that 1: They are not authorised to make or give any representations or warranties in relation to the property either here or elsewhere, either on their own behalf or on behalf of their client or otherwise. They assume no responsibility for any statement that may be made in these particulars. These particulars do not form part of any offer or contract and must not be relied upon as statements or representations of fact. 2: Any areas, measurements or distances are approximate. Plot sizes and dimensions are taken from Promap and are approximate. The text, photographs and plans are for guidance only and are not necessarily comprehensive. It should not be assumed that the property has all necessary planning, building regulation or other consents and Robsons have not tested any services, equipment or facilities. Purchasers must satisfy themselves by inspection or otherwise.