

# PROSPECT

— LONDON —

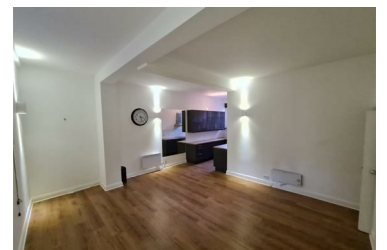


6 Charlotte Court, London, SE1 4NU

**£1,950 Per month**



A spacious two bedroom apartment in secure gated school conversion.



- COMMUNAL ROOF TERRACE
- EXCELLENT TRANSPORT
- SCHOOL CONVERSION
- SPACIOUS RECEPTION
- TWO DOUBLE BEDROOMS