



## Windmill Road, London, W4 1SA

SOLD - A light and spacious triple-aspect purpose-built ground floor flat with views across Chiswick Common, ideally located close to numerous amenities. Featuring two double bedrooms, a white bathroom suite, a 19' dual-aspect reception room, a fully fitted kitchen, private allocated parking space, communal gardens, and a share in the freehold. Situated within close proximity to Turnham Green tube station and the extensive range of shops, bars, and restaurants on Chiswick High Road. No chain.

**£575,000**

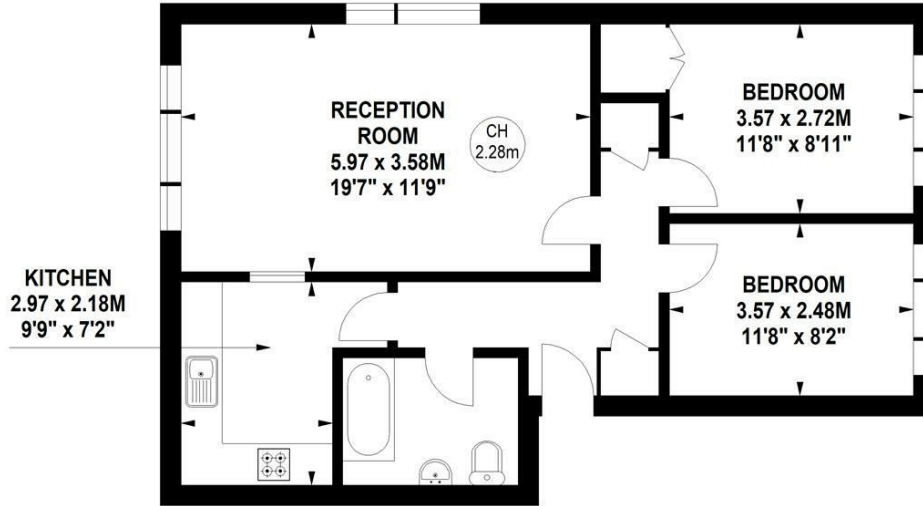
# Jonathan Court, Windmill Road, W4

Approximate gross internal area

63.92 sq m / 688 sq ft

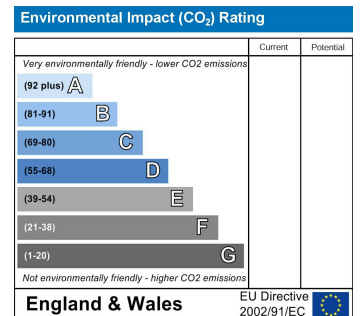
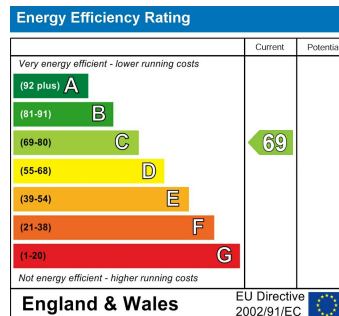


Key :  
CH - Ceiling Height



## Ground Floor

Not to scale, for guidance only and must not be relied upon as a statement of fact.  
All measurements and areas are approximate only



5-7 Turnham Green Terrace, Chiswick, London, W4 1RG

Tel 020 8747 8800

E-mail sales@whitmanandco.com

Website www.whitmanandco.com



MISREPRESENTATION ACT 1967

Whitman & Co. for themselves and for the vendors give notice that these particulars do not constitute any part of, an offer of contract. All statements contained in these particulars are made without responsibility on the part of Whitman & Co. or the vendor. None of the statements contained in these particulars is to be relied upon as statements or representations of facts. Any intending purchaser must satisfy himself by inspection or otherwise as to the correctness of each of the statements contained in these particulars. The vendor does not make or give, and neither Whitman & Co. or any person in their employment has any authority to make or give, any representation or warranty whatever in relation to the property.