

# CAVENDER

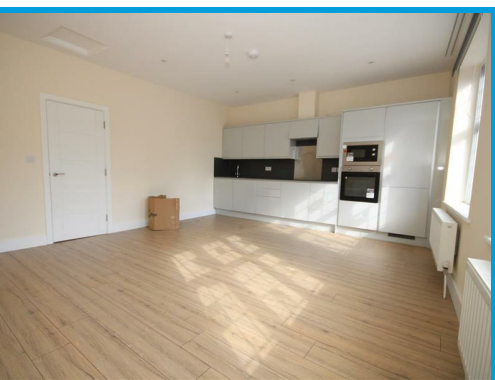
ESTATE AGENT



Epsom Road, Guildford, GU1 3JT

£1,500 PCM

Located in the heart of Guildford town centre, this spacious one double bedroom apartment boasts its own private entrance and features well presented accommodation with a modern kitchen and bathroom



# Description

A spacious one double bedroom maisonette located in the heart of the town centre within moments from shops restaurants and bars.

The property boasts its own private entrance and the accommodation features an entrance hall with stairs to the first. There is then a hallway, a large lounge with open plan kitchen, a double bedroom, a bathroom with shower and a utility room.

The property further boasts character features and is light and airy throughout.

