



Canterbury Court, Woodlands, London, NW11

Share of Freehold

£625,000



800 finchley road, hampstead garden suburb, london, nw11 7tj

telephone 020 8458 5000 facsimile 020 8209 2068

email sales@litchfields.com web litchfields.com

offices also in crouch end & highgate

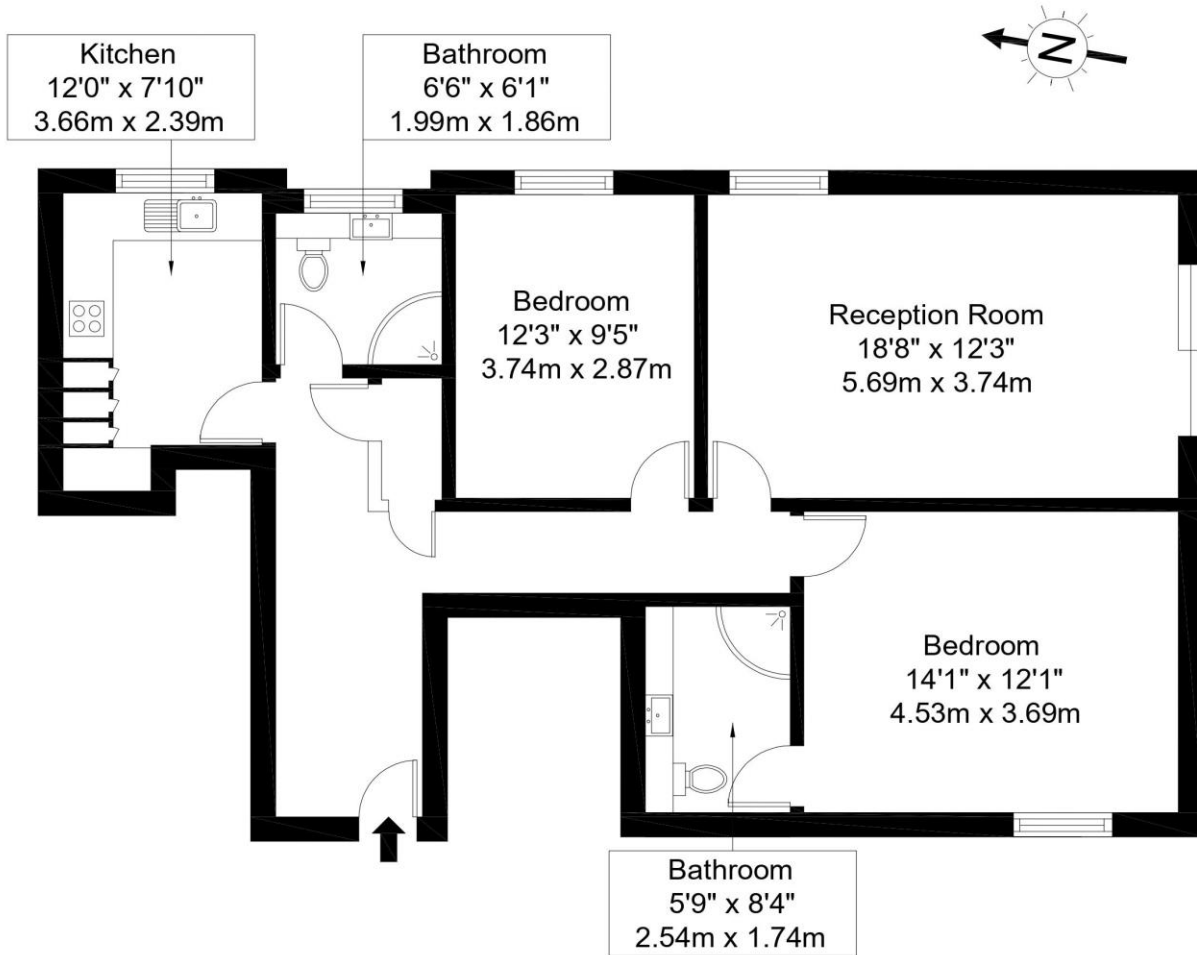
A spacious 2 bedroom 2 shower room (1 en suite) ground floor apartment located in this small, modern purpose built block in The Woodlands. The flat has been generally well maintained and has the benefit of a 19' living room with balcony. There is a separate fitted kitchen and a large principal bedroom with en suite shower room. In addition to the master bedroom there is a second bedroom. There is a second shower room also doubles up as guest WC. Canterbury Court is the most recent block to be built in the Woodlands, after Dolphin Court and James Close. It has the benefit of a share of the freehold, low outgoing (the block is self managed) and has parking within the internal courtyard area, which is accessed by automatic security gates.

2 double bedrooms | Lounge/dining room | Kitchen | 2 shower rooms (1 en suite) | Balcony | Gated parking | Chain free | EPC=C



Canterbury Court, NW11 9QT

Approx Gross Internal Area = 83.82 sq m / 902 sq ft



Ground Floor

Ref

Copyright **BLEU
PLAN**

The Floor plan is not to scale and measurements and areas shown are approximate and therefore should be used for illustrative purposes only. The plan has been prepared in accordance with the RICS code of Measuring Practice and whilst we have confidence in the information produced it must not be relied on. If there is any aspect of particular importance, you should carry out or commission your own inspection of the property.
Copyright @ BLEUPLAN

Whilst every effort is made to ensure these details are accurate, all measurements given are approximate and for guidance only. We are unable to comment on the structure of the building or services and any investigations should be carried out by a qualified surveyor. We strongly advise you to ensure that all legal aspects are fully investigated by your solicitor prior to a purchase. We have not applied tests to any appliances or equipment and therefore cannot verify these are in good working order. We understand from the vendor that the fixtures and fittings listed are to be included in the sale price but these may be subject to negotiation.