



Palmer & Partners



Palmer & Partners

**Orchid Way, Needham Market, Suffolk, IP6 8JQ**

**OIRO: £240,000**

# Orchid Way, Needham Market, Ipswich, Suffolk, IP6 8JQ

This two bedroom detached bungalow, situated in the popular town of Needham Market, is being sold with no onward chain and comes with a garage en bloc. The accommodation comprises entrance hall, lounge, kitchen / dining room, garden room / utility, two bedrooms, and bathroom.

Needham Market is an expanding town in mid Suffolk situated between the towns of Ipswich and Bury St Edmunds with the East Anglia Main Line railway running through the town providing trains to Ipswich and Cambridge. Needham Market offers all the usual amenities such as shops, including a new large Co-op; doctors; dentists; pubs and restaurants; together with Bosmere Primary School. The town lies in the Gipping valley and the River Gipping flows through it. The whole High Street is designated a Conservation Area. In Needham Market you will find the fantastic Needham Lake where there are some fabulous countryside and riverside walks. Walking along the River Gipping, you pass woodlands, lakes and wildflower meadows and you can marvel at the historic bridges locks and watermills. Needham Lake is popular with families, fishermen and model boat enthusiasts and is also a haven for wildlife.

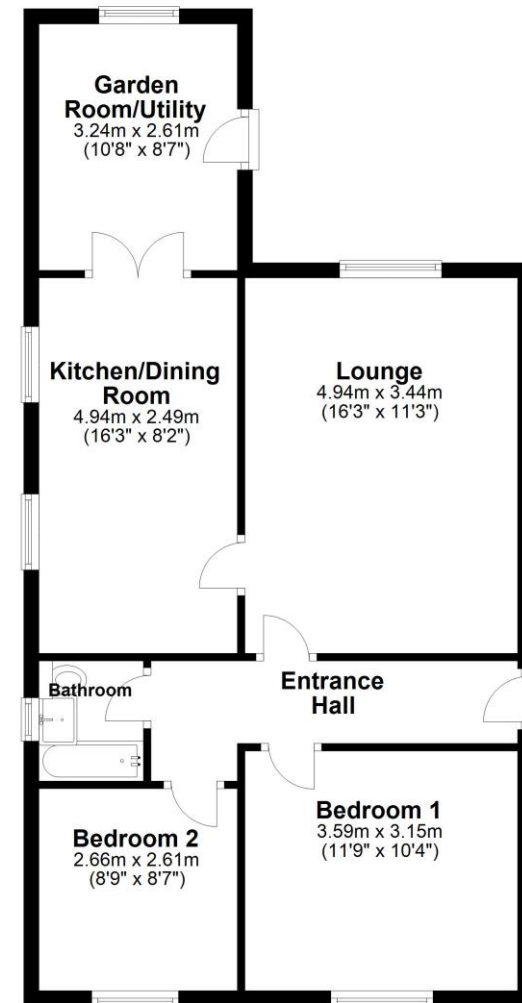
Council tax band: C

EPC Rating: D

## Accommodation & Amenities

- No Onward Chain
- Detached Bungalow
- Two Bedrooms
- Lounge
- Garage en Bloc

**Ground Floor**  
Approx. 67.8 sq. metres (729.9 sq. feet)



Total area: approx. 67.8 sq. metres (729.9 sq. feet)

Although every attempt has been made to ensure the accuracy of this floorplan measurements of doors, windows, rooms and any other items are approximate and no responsibility is taken for any error, omission or mis-statement. This plan is for illustrative purposes only.  
Plan produced using PlanUp.



