



Chiswick High Road, London, W4 1PP

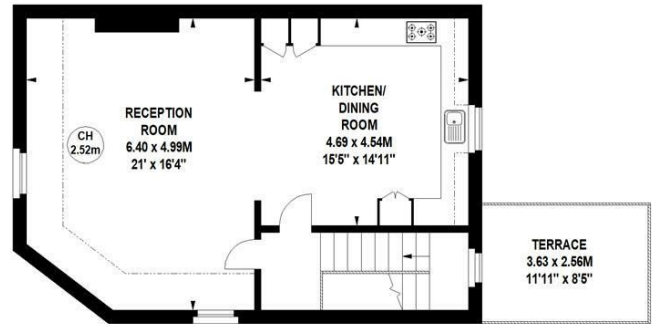
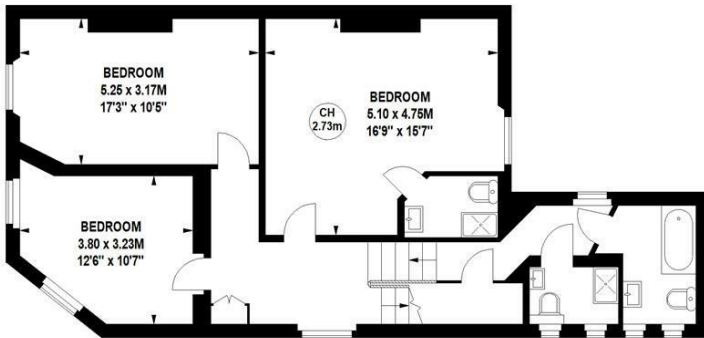
A spacious three double bedroomed maisonette situated in the heart of Chiswick's main high road with its array of boutique shops, wine bars and restaurants. Apartments of this size and nature rarely are available. Accommodation provides: Spacious dual aspect open plan reception room with newly fitted kitchen/dining room. Large roof terrace with impressive far reaching views. Master bedroom with en-suite bathroom, two further double bedrooms with a family bathroom and additional shower room. Gas fired central heating throughout. 1494 sq ft of living space over three floors within 2 minutes of Turnham Green tube station. Numerous local bus routes and convenient vehicular access via A4/M4 Central London, Heathrow & The West. Hounslow Council Band E. EPC: C. The property is offered part furnished and is Available 23rd December

- Three Double Bedrooms
- Three Bathrooms
- Large Open Plan Living Space
- Roof Terrace with Impressive Views
- Wet Room Shower
- Master Bedroom with En-suite
- Part Furnished
- Available 23rd December

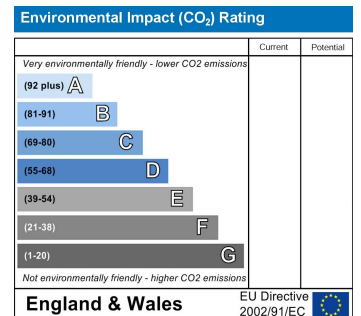
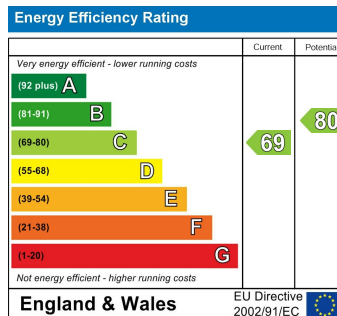
£3,250 Per Calendar Month

Chiswick High Road, W4

Approximate gross internal area
138.79 sq m / 1494 sq ft



Not to scale, for guidance only and must not be relied upon as a statement of fact.
All measurements and areas are approximate only



5-7 Turnham Green Terrace, Chiswick, London, W4 1RG

Tel 020 8747 8800

E-mail lettings@whitmanandco.com

Website www.whitmanandco.com