



Prebend Mansions, London, W4  
Guide Price £1,395,000

**WHITMAN & CO.**

SALES · LETTINGS · COMMERCIAL



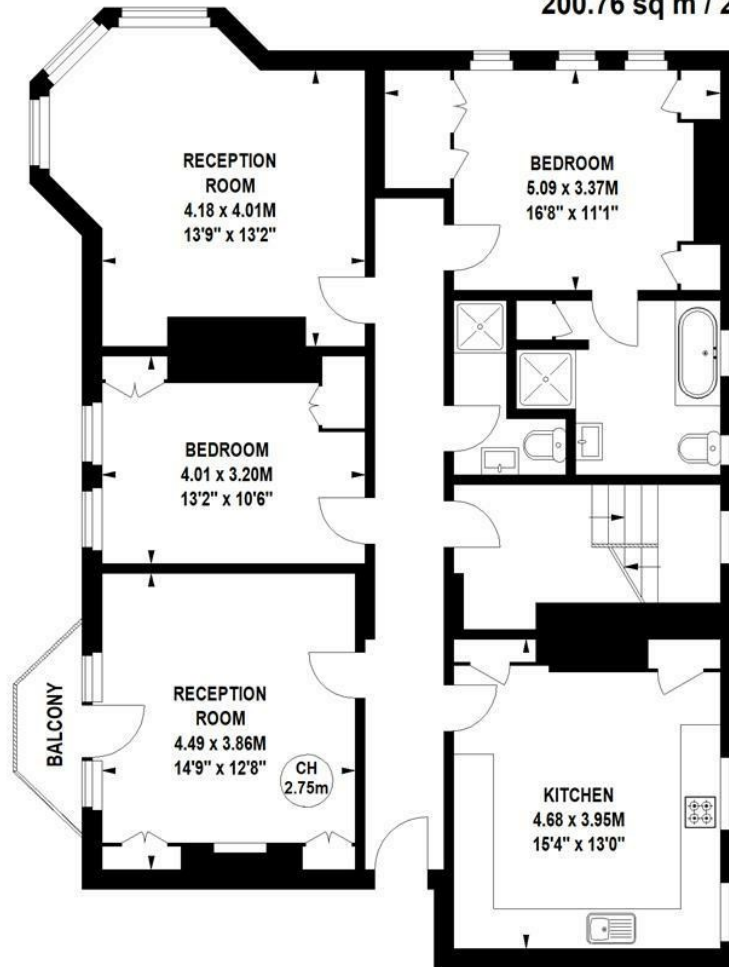
An immaculately presented and spacious four-bedroom penthouse apartment, situated in a prestigious mansion block in the heart of Chiswick, just moments from Chiswick High Road with its array of boutique shops and restaurants. The apartment offers 2,161 square feet of accommodation, featuring two reception rooms, one with a private balcony, four double bedrooms with bespoke fitted wardrobes, a large family bathroom, and two additional shower rooms. The property also includes a spacious fitted kitchen/breakfast room, a cloakroom/utility room, and ample storage. Local transport links are excellent, with Turnham Green and Stamford Brook tube stations nearby, numerous local bus routes, and convenient vehicular access via the A4/M4 to Central London, Heathrow, and the West.



# Prebend Mansions, W4

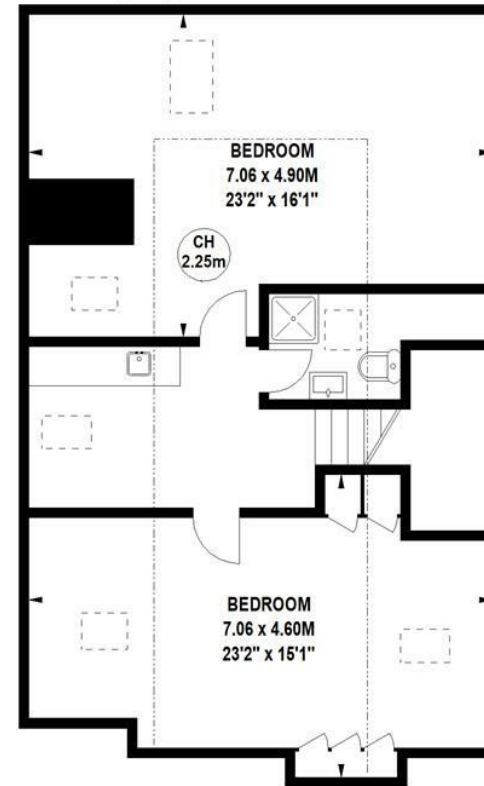
Approximate gross internal area

200.76 sq m / 2161 sq ft



Third Floor

Key :  
CH - Ceiling Height



Fourth Floor

Not to scale, for guidance only and must not be relied upon as a statement of fact.  
All measurements and areas are approximate only

- Split-level penthouse apartment
- Four beds/three baths
- Sought after red brick mansion block

- 2161 sqft of accommodation
- Two reception rooms and kitchen/breakfast room
- Close to numerous amenities

Tenure - Leasehold with Share of Freehold  
Lease length - 967 years remaining  
Ground rent - Peppercorn  
Service charge - £7227 pa (including reserve fund)  
Local authority - Hounslow  
Council tax - Band G

