



18 Gawdy Road, Norwich - NR7 9UY

£190,000

Guide Price Of £190,000-£200,000. Located in the popular NR7 postcode is this three bedroom mid-terrace, ideal for those putting there own stamp on a...

EPC Energy Efficiency Rating: E

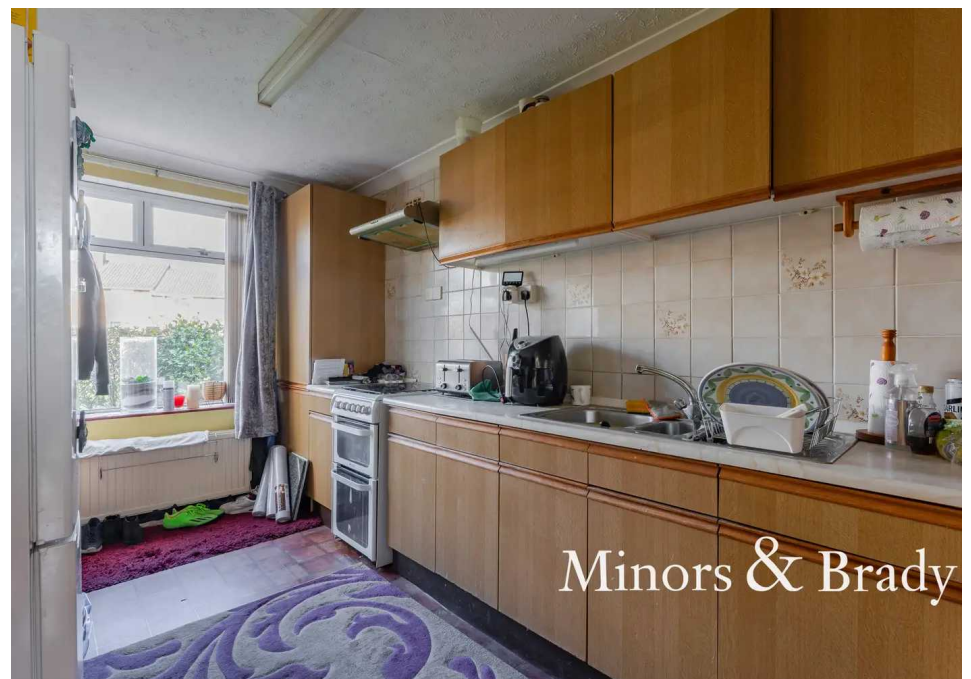
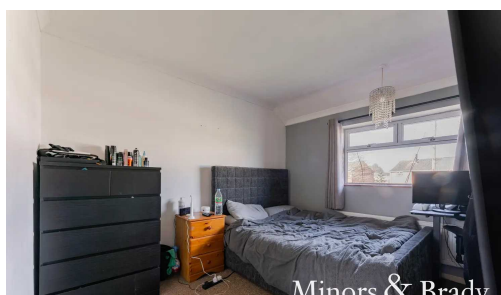
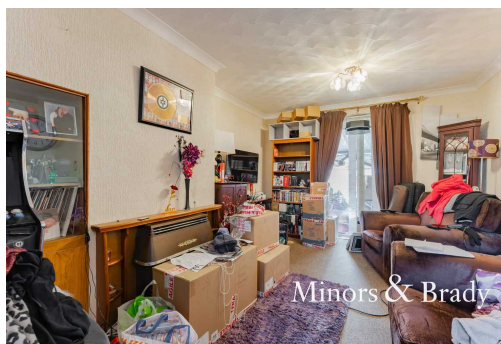
EPC Environmental Impact Rating: E

Minors & Brady
Estate Agents, Lettings and Property Management

Guide Price Of £190,000-£200,000. Located in the popular NR7 postcode is this three bedroom mid-terrace, ideal for those putting there own stamp on a property. Boasting ample garden space to the front and rear along with a utility room, conservatory and sizeable kitchen and lounge.



Guide Price Of £190,000-£200,000. Located in the popular NR7 postcode is this three bedroom mid-terrace, ideal for those putting there own stamp on a property. Boasting ample garden space to the front and rear along with a utility room, conservatory and sizeable kitchen and lounge.

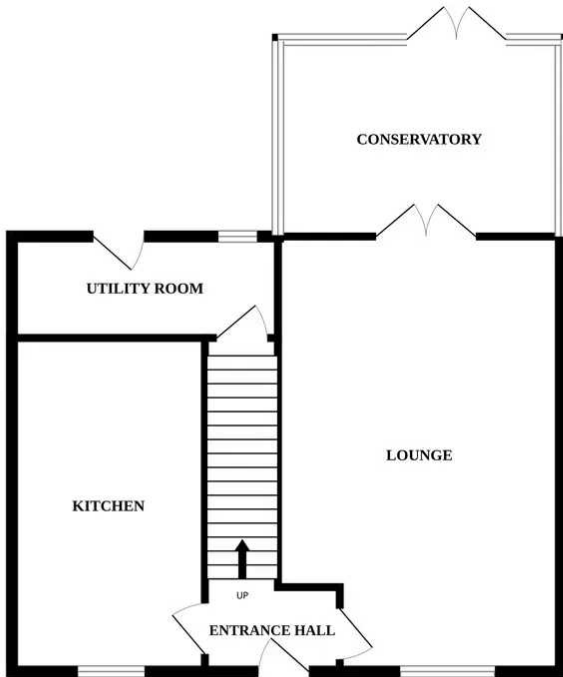


Guide Price Of £190,000-£200,000. Located in the popular NR7 postcode is this three bedroom mid-terrace, ideal for those putting there own stamp on a property. Boasting ample garden space to the front and rear along with a utility room, conservatory and sizeable kitchen and lounge.

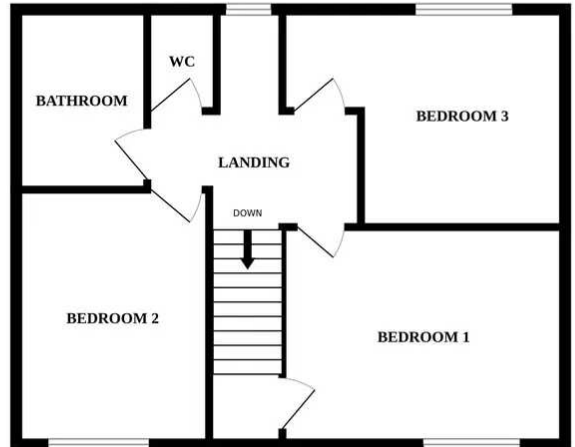


Minors & Brady

GROUND FLOOR



1ST FLOOR



Whilst every attempt has been made to ensure the accuracy of the floorplan contained here, measurements of doors, windows, rooms and any other items are approximate and no responsibility is taken for any error, omission or mis-statement. This plan is for illustrative purposes only and should be used as such by any prospective purchaser. The services, systems and appliances shown have not been tested and no guarantee as to their operability or efficiency can be given.
Made with Metropix ©2023

You can include any text here. The text can be modified upon generating your brochure.

You can include any text here. The text can be modified upon generating your brochure.

