



Canterbury Gardens, Hadleigh, Suffolk, IP7 5BS

OIEO: £300,000

Canterbury Gardens, Hadleigh, Ipswich, Suffolk, IP7 5BS

Situated in the heart of Hadleigh lies this two bedroom detached bungalow which is being sold with no onward chain and comes with off-road parking for several cars, garage, front and rear gardens, and double glazing throughout. The accommodation comprises front porch, dining room, kitchen / breakfast room, lounge, two good size double bedrooms, and shower room.

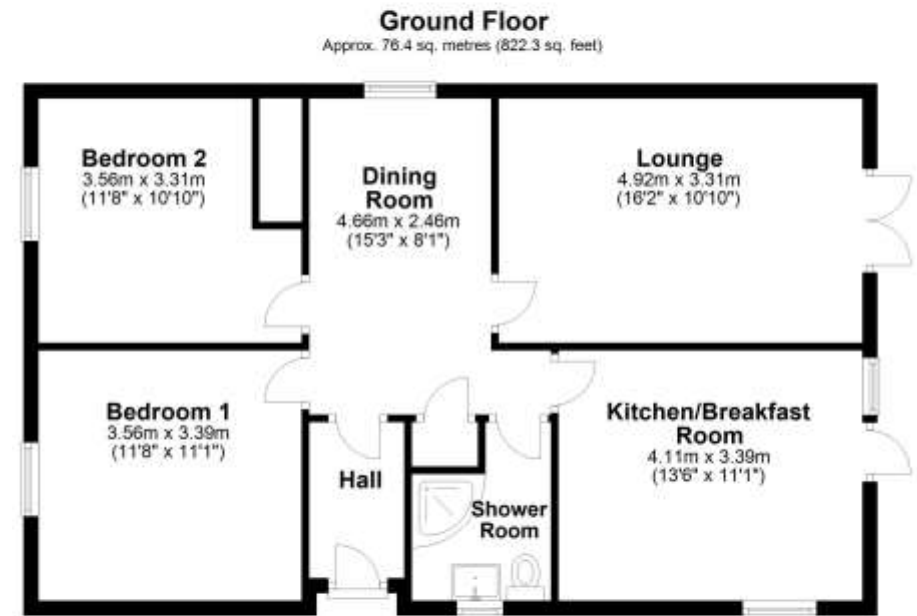
Hadleigh is an ancient market town in South Suffolk situated next to the River Brett between the larger towns of Sudbury and Ipswich. The town has many amenities including shops, pubs, churches, schools, outdoor recreational facilities, equestrian centre, and paintball centre. Hadleigh is home to some 246 listed buildings and the Grade II listed Topplesfield Bridge, over the River Brett, is the oldest in the country still carrying vehicles. One of the oldest one-day agricultural shows in East Anglia is also held annually in Hadleigh.

Council tax band: C

EPC Rating: D

Accommodation & Amenities

- No Onward Chain
- Detached Bungalow
- Two Good Size Double Bedrooms
- Two Separate Reception Rooms
- Garage & Ample Off-Road Parking
- Front & Rear Gardens



Total area: approx. 76.4 sq. metres (822.3 sq. feet)



