

# CAVENDER

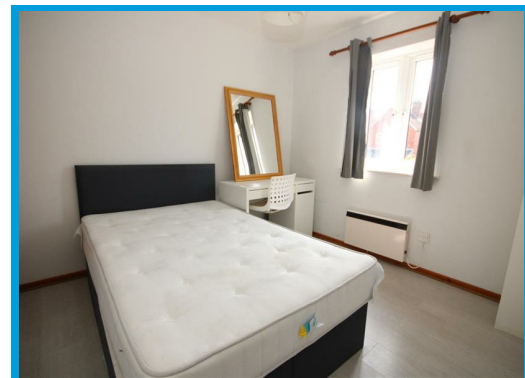
ESTATE AGENT



Hollow Close, Guildford, GU2 7JJ

£2,900

**\*\*STUDENT ACCOMODATION\*\*** Four bedroom house arranged over three floors, moments from Guildford town Centre, the University of Surrey and Main Line Station.



# Description

**\*\*STUDENT ACCOMMODATION\*\*** Located just moments from the university of Surrey, this large four double bedroom house is arranged over three floors. the property benefits from two bathrooms, a large kitchen/ communal space leading onto a private rear garden. The property is walking distance from Guildford town centre and the mainline station.



Energy Efficiency Rating		Current	Potential
Very energy efficient - lower running costs			
(92 plus) A			
(81-91) B			
(69-80) C			
(55-68) D			
(39-54) E			
(21-38) F			
1-10 G			
Not energy efficient - higher running costs			
<b>England &amp; Wales</b>		EU Directive 2002/91/EC	

Environmental Impact (CO <sub>2</sub> ) Rating		Current	Potential
Very environmentally friendly - lower CO <sub>2</sub> emissions			
(92 plus) A			
(81-91) B			
(69-80) C			
(55-68) D			
(39-54) E			
(21-38) F			
(1-20) G			
Not environmentally friendly - higher CO <sub>2</sub> emissions			
<b>England &amp; Wales</b>		EU Directive 2002/91/EC	

