



**PETRAS
PROPERTY**



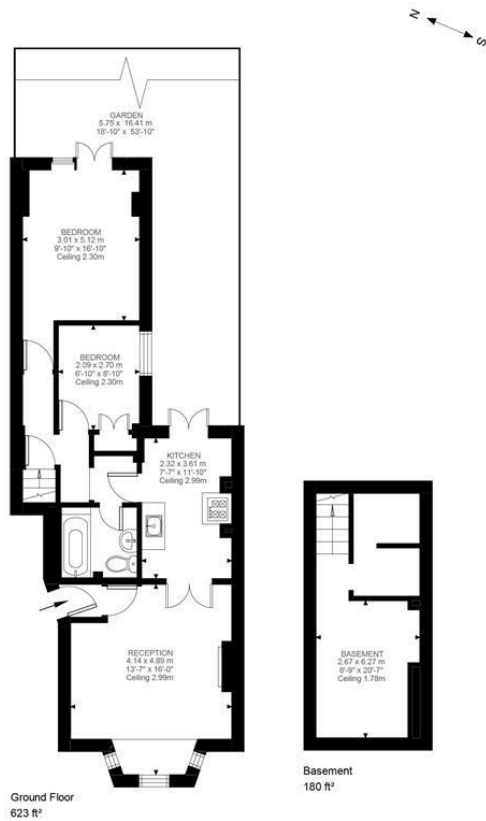
GFF 56 Schubert Road, London, SW15 2QS **£2,200 Per month**

This fabulous two bedroom ground floor garden flat is available to rent on Schubert Road in East Putney.

The flat comprises a lovely front reception room with wooden floors, an industrial style kitchen, two bedrooms, a large converted cellar and a private garden.

Situated in the East Putney Grid, the flat enjoys a quiet location within very easy reach of East Putney underground station, as well as Putney mainline and plenty of shops and eateries.

The flat is available to rent immediately on an unfurnished basis.



Schubert Road, SW15
Approximate Gross Internal Area
74.65 SQ.M / 804 SQ.FT

KEY: CH = Ceiling Height
[Restricted Head Height]

Illustration for identification purposes only. Not to scale.
Floor Plan Drawn According To RICS Guidelines.



Energy Efficiency Rating		Current	Potential
Very energy efficient - lower running costs			
(92 plus) A			
(81-91) B			
(69-80) C		71	81
(55-68) D			
(39-54) E			
(21-38) F			
(1-20) G			
Not energy efficient - higher running costs			
England & Wales		EU Directive 2002/91/EC	
Environmental Impact (CO ₂) Rating		Current	Potential
Very environmentally friendly - lower CO ₂ emissions			
(92 plus) A			
(81-91) B			
(69-80) C			
(55-68) D			
(39-54) E			
(21-38) F			
(1-20) G			
Not environmentally friendly - higher CO ₂ emissions			
England & Wales		EU Directive 2002/91/EC	

These particulars, whilst believed to be accurate are set out as a general outline only for guidance and do not constitute any part of an offer or contract. Intending purchasers should not rely on them as statements of representation of fact, but must satisfy themselves by inspection or otherwise as to their accuracy. No person in this firm's employment has the authority to make or give any representation or warranty in respect of the property.