

SW19

it's all in the postcode...



SW19

Ryfold Road

Guide Price £975,000

- Prime Location
- Unlimited Potential
- Renovation Opportunity
- Chain Free
- Flexible Layout



SW19



SW19



SW19

020 8544 2828

Wimbledon: Wimbledon Park: Colliers Wood

www.SW19.com

SW19 Estate Agents Ltd. Is registered in England & Wales No. 05508737

it's all in the postcode...

SW19 Estate Agents are delighted to present a unique opportunity to acquire a property located on one of the most sought-after roads within the Wimbledon Park Grid. This four-bedroom house is a rare find, offering incredible potential for those seeking a blank canvas to create their dream home. Currently, the property requires total modernisation and features an unconventional layout. The kitchen and reception room are situated on the first floor, while the bedrooms are spread across the lower and upper levels. However, with the extensive possibilities for reconfiguration (subject to planning), you have the freedom to design the space exactly as you envision. Whether you choose to maintain its existing charm or completely transform the layout, this property offers boundless potential to create a home tailored to your lifestyle.



020 8544 2828
Wimbledon: Wimbledon Park: Colliers Wood
www.SW19.com
SW19 Estate Agents Ltd. Is registered in England & Wales No. 05508737
'it's all in the postcode...'

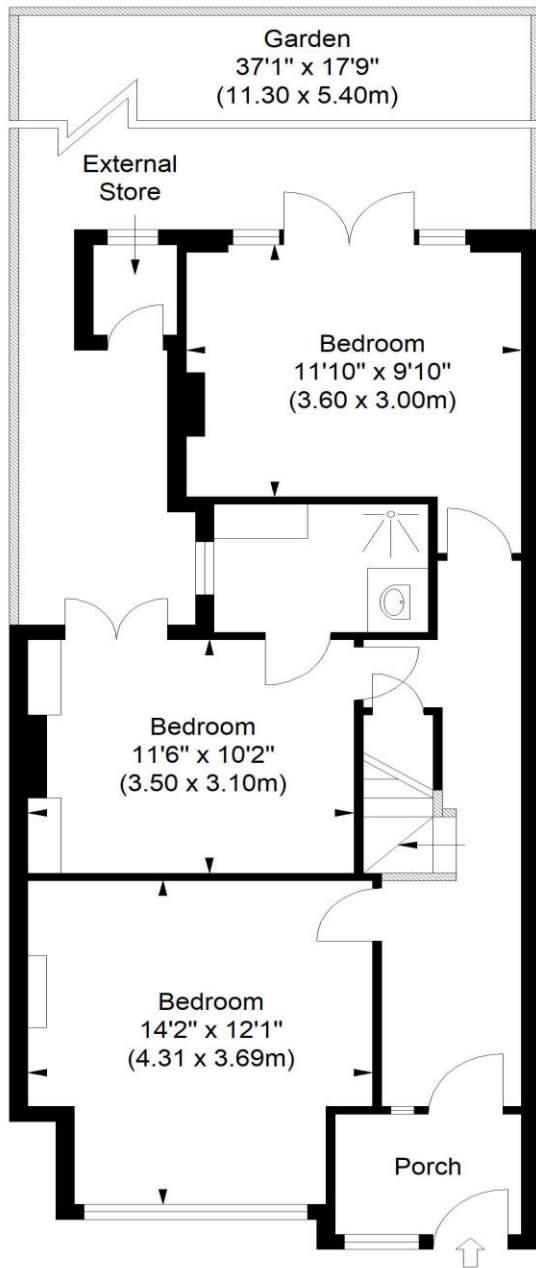
Ryfold Road

Approximate Gross Internal Area (Excluding External Storage)

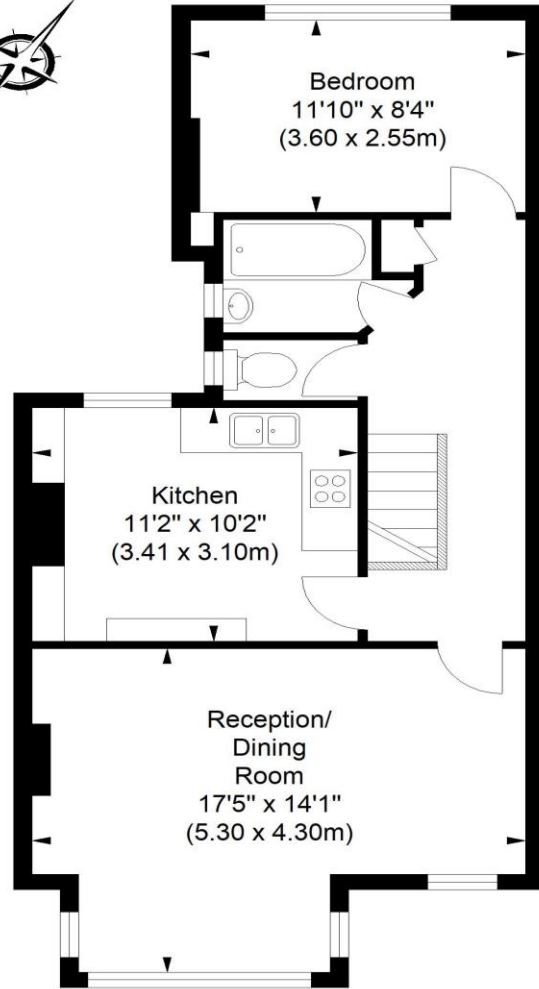
1209 sq ft / 112.33 sq m

Approximate Gross Internal Area (Including External Storage)

1222 sq ft / 113.53 sq m



Ground Floor



First Floor

ILLUSTRATION FOR IDENTIFICATION PURPOSES ONLY

ALL MEASUREMENTS ARE MAXIMUM, AND INCLUDE WINDOW BAYS AND WARDROBES WHERE APPLICABLE
THIS PLAN MUST NOT BE REPRODUCED BY ANY OTHER PERSON WITHOUT PERMISSION

SW19

020 8544 2828

Wimbledon: Wimbledon Park: Colliers Wood

www.SW19.com

SW19 Estate Agents Ltd. Is registered in England & Wales No. 05508737

'it's all in the postcode...'

These particulars are for guidance only and should not be relied upon as a statement or representation of fact. All measurements given are approximate only and should not be relied upon for ordering carpets, equipment etc. Purchasers should satisfy themselves by inspection or otherwise as to the accuracy of the statements contained within. Neither SW19 estate agents ltd or related companies or their employees can confirm structural conditions of the property or that any appliances or other facilities are in working order. Purchasers are strongly recommended to arrange their own survey.

020 8544 2828

Wimbledon: Wimbledon Park: Colliers Wood

www.SW19.com

SW19 Estate Agents Ltd. Is registered in England & Wales No. 05508737

'it's all in the postcode...'