



Bolton Gardens , London, SW5 **For Sale**

3 Bedrooms | 1 Reception | 2 Bathrooms | Leasehold

VIDEO TOUR and 3D Tour available
Split level period property
Over 1000 sqft (98 sq meters)
3 double bedroom
Lots of natural light
Lovely quiet road
Engineered wooden flooring
Balcony
Close to Lycee French School

£1,499,500 Guide

Just Reduced by £100,000!

Willmotts are delighted to present this large level three bedroom apartment that forms part of an attractive period house in Bolton Gardens.

3D Virtual Tour Available. At over 1000 sq ft (98 sqm) its a lovely size flat with a huge amount of natural light. Master bedroom with en-suite shower room, 2 further bedrooms, family bathroom, and large open plan living room with fitted kitchen. In addition there is a small balcony leading of this room.

The property has carpets in the bedrooms and hallway and engineered wood in the open-plan kitchen reception room.

Set in one of the nicest roads in Kensington and Chelsea. It is situated on a residential road and a short walk from The Lycee French School in South Kensington. The transport connections are fantastic with Gloucester Road and Earls Court being a short walk away.

Service Charges: £1848 per annum approx

Insurance 2022/2023: £1118

Leasehold: Will be sold with a new 999 year lease

Ground Rent: £100 per annum (rising)

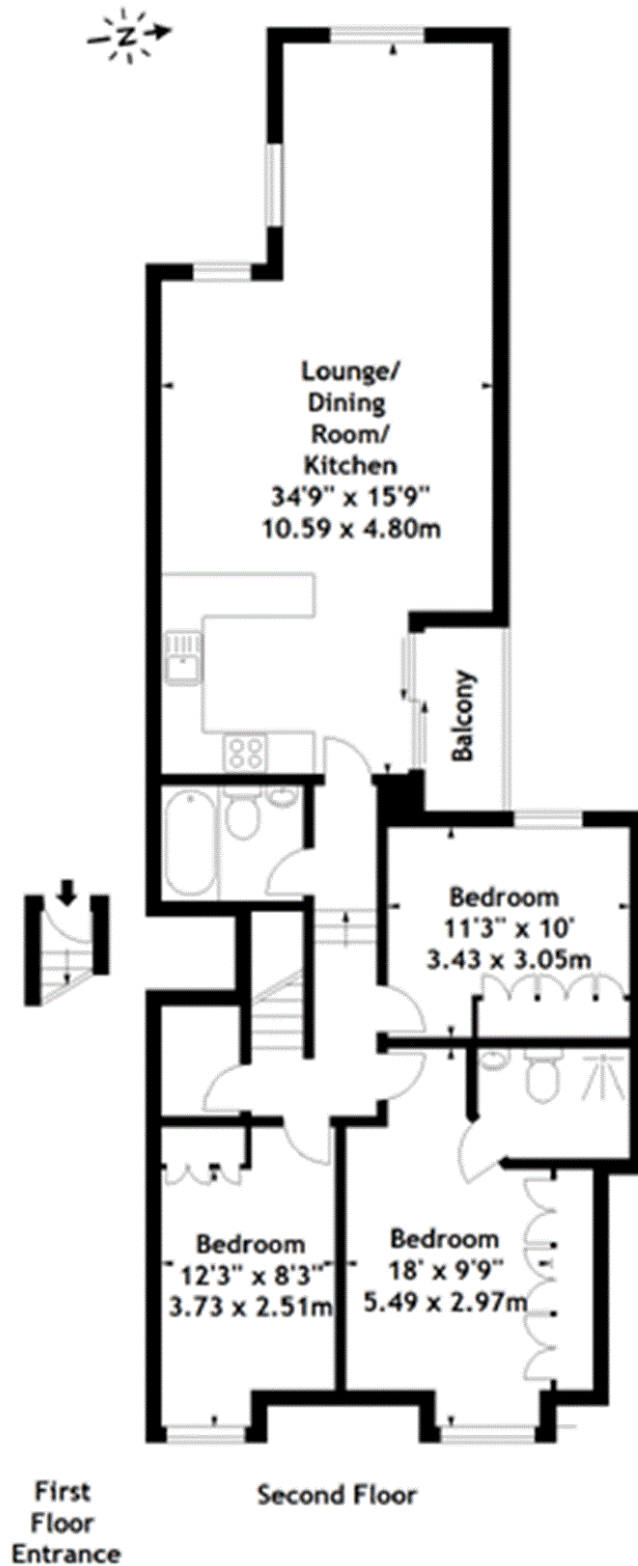
The seller is a connected party to Willmotts

EPC -C

1. No description or information given about the property or its value, whether written or verbal or whether or not in these particulars (?Information?) may be relied upon as a statement of representation or fact. Neither Willmotts nor its Joint Agents have any authority to make any representation and accordingly any Information given is entirely without responsibility on the part of Willmotts or the seller/lessor.
- 2 Any photographs (and artist?s impressions) show only certain parts of the property at the time they were taken. Any areas, measurements or distances given are approximate only.
- 3 Any reference to alterations to, or use of any part of the property is not a statement that any necessary planning, building regulations or other consent has been obtained. These matters must be verified by any intending buyer/lessee.
4. Any buyer/lessee must satisfy himself by inspection or otherwise as to the correctness of any Information given.
5. We have not carried out a survey nor tested services, appliances or specific fittings. For fixtures and fittings please refer to vendors fixtures and fittings forms.;



Bolton Gardens, SW5
Approx. Gross Internal Area
1061 Sq Ft - 98.57 Sq M



Measured in accordance with RICS guidelines. Every attempt is made to ensure accuracy, however all measurements are approximate. This floor plan is for illustrative purposes only and is not to scale.

© Datography Ltd 2014
Photographs * Floorplans * Virtual Tours
Tel: 0845 643 4401 www.datography.com

Map

 Bolton Gardens , London, SW5

Important Notice

1. No description or information given about the property or its value, whether written or verbal or whether or not in these particulars (“Information”) may be relied upon as a statement of representation or fact. Neither Willmotts nor its Joint Agents have any authority to make any representation and accordingly any Information given is entirely without responsibility on the part of Willmotts or the seller/lessor.
2. Any photographs (and artist’s impressions) show only certain parts of the property at the time they were taken. Any areas, measurements or distances given are approximate only.
- 3 Any reference to alterations to, or use of any part of the property is not a statement that any necessary planning, building regulations or other consent has been obtained. These matters must be verified by any intending buyer/lessee.
4. Any buyer/lessee must satisfy himself by inspection or otherwise as to the correctness of any Information given.