



Reckitt Road, London, W4 2BT

A delightful freshly painted two-bedroom house situated in this ever-popular "Glebe Estate" area located in the Heart of Chiswick within a short walk of Chiswick High road with its an array of boutique shops and restaurants, retailers include M&S, Waitrose, Sainsbury, and Tesco. The accommodation provides: spacious open plan living area incorporating fitted kitchen with island unit to the front with living area to rear overlooking a private garden, two double bedrooms, bathroom, entrance hall, utility room, private front and rear gardens. Local transport links include Turnham Green and Chiswick Park tube stations, numerous local bus routes with vehicular access via A4/M4 to central London, Heathrow & The West. Hounslow Council Tax Band E. EPC-C. The property is offered unfurnished and available now

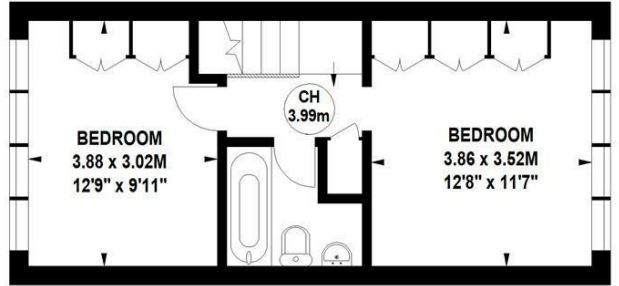
- Lovely "Glebe Estate" residential area
- Great for transport links
- Very nicely presented
- Open plan living area
- Fitted kitchen with island unit
- Two double bedrooms
- Bathroom
- Private front and rear gardens
- Gas fired central heating
- Available now unfurnished

£3,000 Per Calendar Month

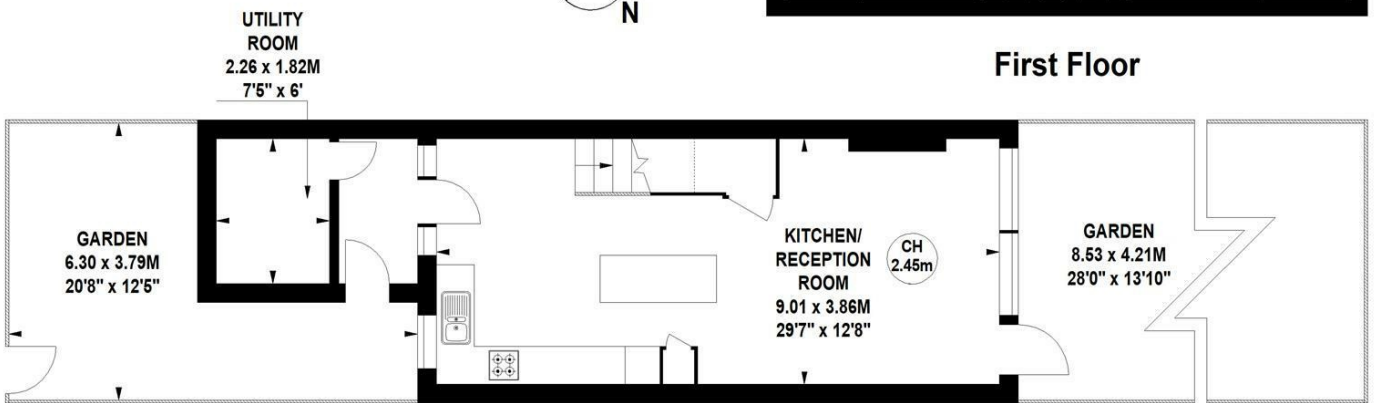
Reckitt Road, W4

Approximate gross internal area
77.85 sq m / 838 sq ft

Key :
CH - Ceiling Height

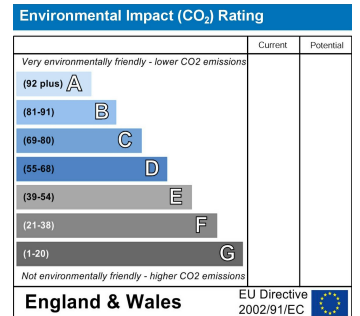
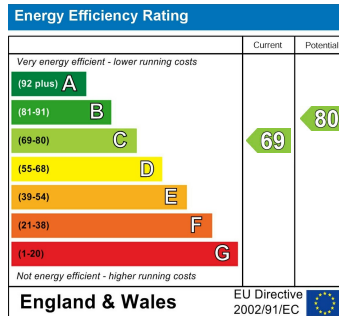


First Floor



Ground Floor

Not to scale, for guidance only and must not be relied upon as a statement of fact.
All measurements and areas are approximate only



5-7 Turnham Green Terrace, Chiswick, London, W4 1RG
Tel 020 8747 8800

E-mail lettings@whitmanandco.com
Website www.whitmanandco.com