



Caro Point , Grosvenor Waterside , Gatliff Road SW1W 8BD

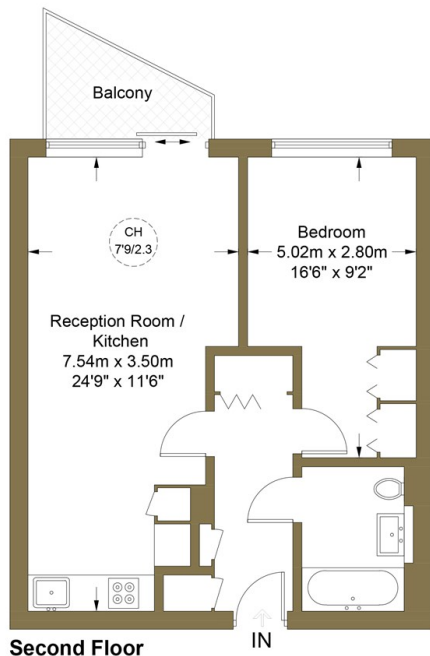
£690,000

- 24 HOUR CONCIERGE SERVICE
- PRIVATE BALCONY
- WALKING DISTANCE TO SLOANE SQUARE AND VICTORIA STATIONS
- VIDEO VIEWING AVAILABLE
- UNDERFLOOR HEATING
- ONSITE RESTAURANT AND FOOD SHOP
- GYM AND SPA
- MINUTES AWAY FROM BATTERSEA PARK



Caro Point, SW1W

Approximate Gross Internal Area = 49 sq m / 527 sq ft

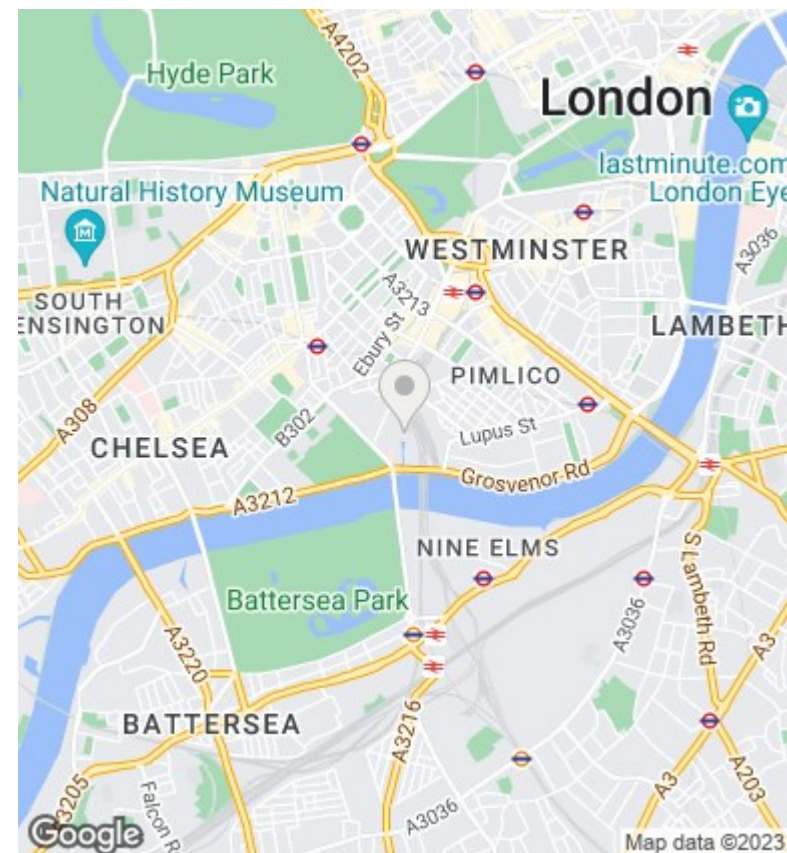


Second Floor

This plan is for layout guidance only. Not drawn to scale unless stated. Windows and door openings are approximate. Whilst every care is taken in the preparation of this plan, please check all dimensions, shapes and compass bearings before making any decisions reliant upon them. (ID764143)



CHASE APARTMENTS
LONDON



Viewings

Viewings by arrangement only.
Call 02077225022 to make an appointment.

Council Tax Band

E

EPC Rating:

| Energy Efficiency Rating | | |
|---|-------------------------|-----------|
| | Current | Potential |
| Very energy efficient - lower running costs | | |
| (92 plus) A | | |
| (81-91) B | | |
| (69-80) C | | |
| (55-68) D | | |
| (39-54) E | | |
| (21-38) F | | |
| (1-20) G | | |
| Not energy efficient - higher running costs | | |
| England & Wales | EU Directive 2002/91/EC | |