



Worbeck Road, SE20 | £339,995

02087029333

[crystalpalace@pedderproperty.com](mailto:crystalpalace@pedderproperty.com)

**pedder**  
We live local





## In General

- Split level accommodation
- A share of the freehold
- No onward chain
- Convenient for transport links
- Separate kitchen
- Two double bedrooms

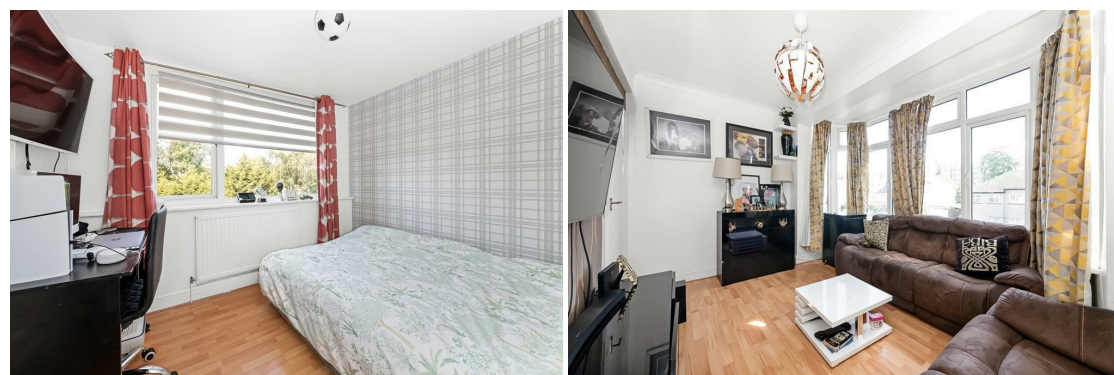
## In Detail

A two double bedroom split level conversion positioned on a quiet leafy residential road in Anerley.

The property partially forms the first and second floors of a detached building and include a light-filled reception room with a bay window, a separate kitchen, and a bathroom with a sky-light on the floor above. Further benefits include a share of the freehold and no onward chain.

Worbeck Road works well for multiple transport links including Birkbeck, Anerley, and Norwood Junction rail (fast to London Bridge), also walkable amenities and Crystal Palace Park.

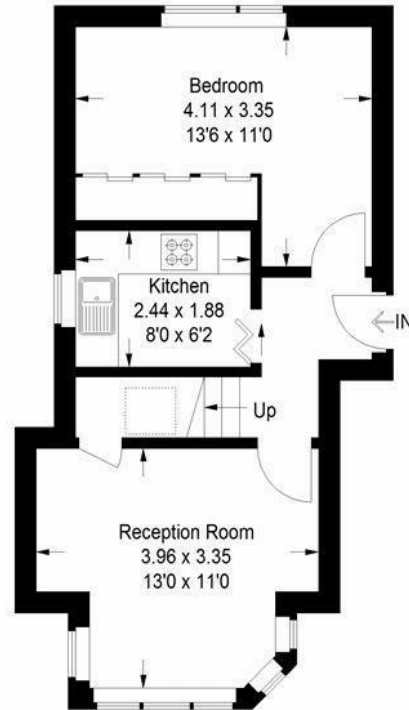
EPC: D | Council Tax Band: B | Lease: 99 years remaining | SC: £250pm | GR: N/A | BI: Included in SC



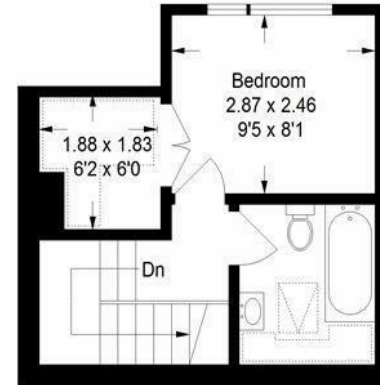
# Floorplan

**Worbeck Road, SE20**

Approximate Gross Internal Area  
55.9 sq m / 602 sq ft



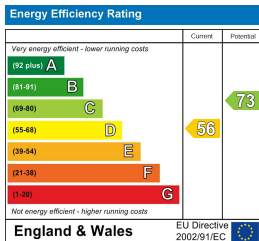
**Ground Floor**



= Reduced headroom below 1.5 m / 5'0

**First Floor**

Copyright www.pedderproperty.com © 2024  
These plans are for representation purposes only as defined by RICS - Code of Measuring Practice. Not drawn to Scale. Windows and door openings are approximate. Please check all dimensions, shapes and compass bearings before making any decisions reliant upon them.



Pedder Property Ltd trading as Pedder for themselves and for the vendor/landlord of this property whose agents they are, give notice that (1) these particulars do not constitute any part of an offer or contract, (2) all statements contained within these particulars are made without responsibility on the part of Pedder or the vendor/landlord, (3) whilst made in good faith, none of the statements contained within these particulars are to be relied upon as a statement of representation or fact, (4) any intending purchaser/tenant must satisfy him/herself by inspection or otherwise as to the correctness of each of the statements contained within these particulars, (5) the vendor/landlord does not make or give either Pedder or any person in their employment any authority to make or give representation or warranty whatsoever in relation to this property.