



CHATTERTON | REES



Ground Floor Flat, 56 Elbe Street, London, SW6 2QP
Asking price £700,000





Ground Floor Flat, 56 Elbe Street

London, SW6 2QP

- Two Bedrooms
- Good condition
- Chain Free
- Private Garden
- Fully extended
- Share of Freehold

A stunning 2-bedroom garden flat in the heart of Sands End.

Two double bedrooms, one bathroom, and an open plan living and kitchen to the rear of the building that opens up onto a west-facing private garden accessed via floor-to-ceiling bi-fold windows/ doors which makes the living space very bright throughout the day.

The property has been finished to a good standard throughout from the flooring, bathroom, kitchen fittings, and appliances.

Asking price £700,000



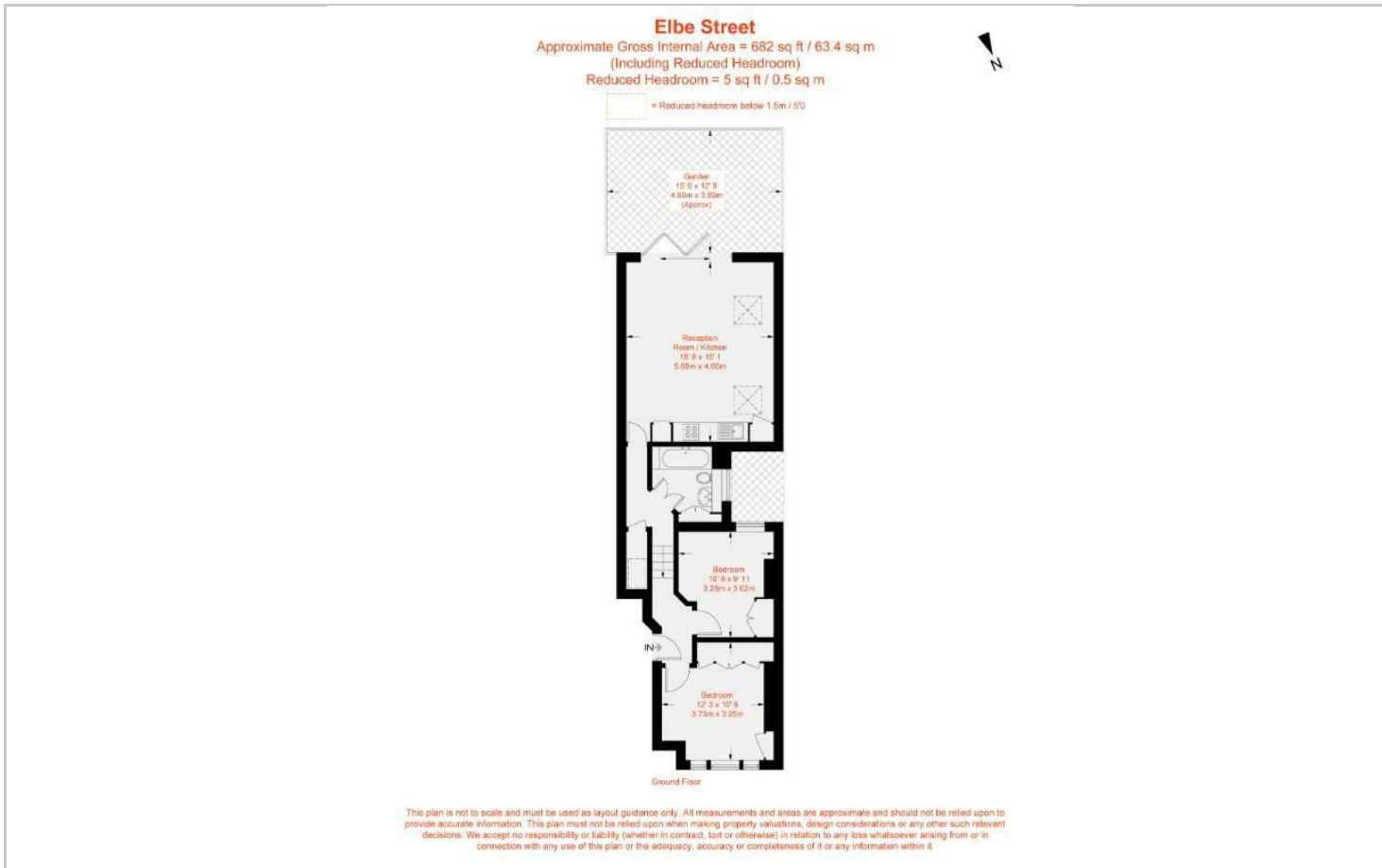


Directions

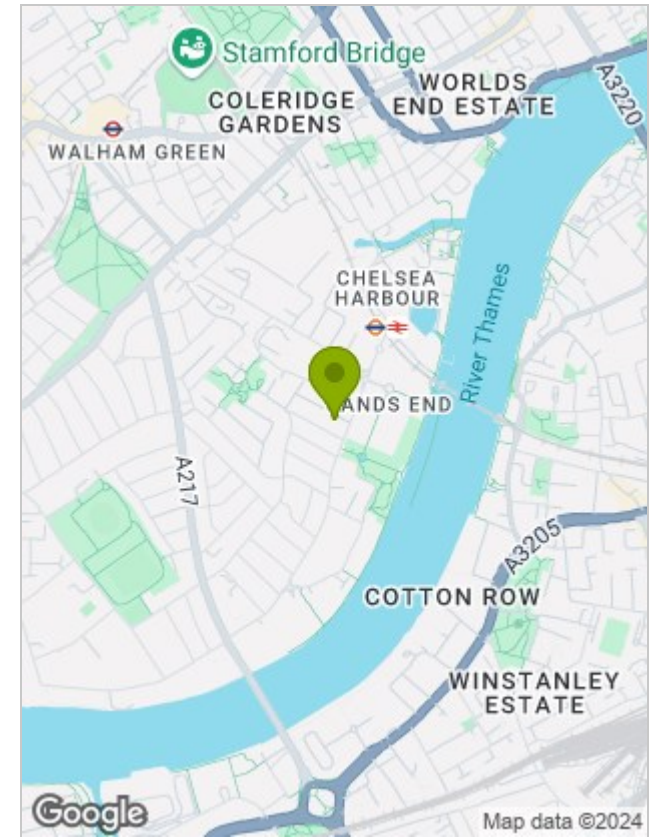
Located at the Southern end of Elbe Street, this particular property is only moments away from Imperial Wharf station offering quick links towards West Brompton and Clapham Junction. The Sainsbury superstore is a short walk away and a 15-minute walk takes you to Kings Road, the nightlife of Fulham Broadway, and the tube.



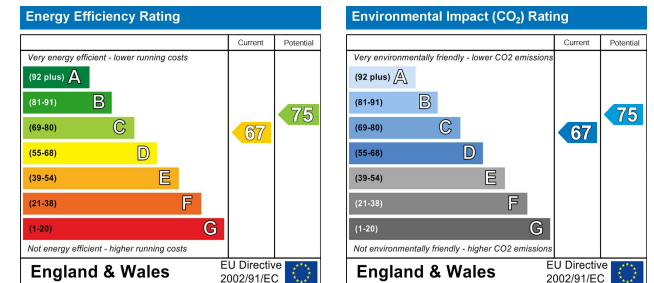
Floor Plans



Location Map



Energy Performance Graph



Viewing

Please contact our Chatterton Rees Office on 020 3780 0580 if you wish to arrange a viewing appointment for this property or require further information.

The particulars are set out as a general outline only for the guidance of intended purchasers or lessees, and do not constitute, any part of a contract. Nothing in these particulars shall be deemed to be a statement that the property is in good structural condition or otherwise nor that any of the services, appliances, equipment or facilities are in good working order. Purchasers should satisfy themselves of this prior to purchasing.