



The Lockhouse, Oval Road, Camden NW1 7BF

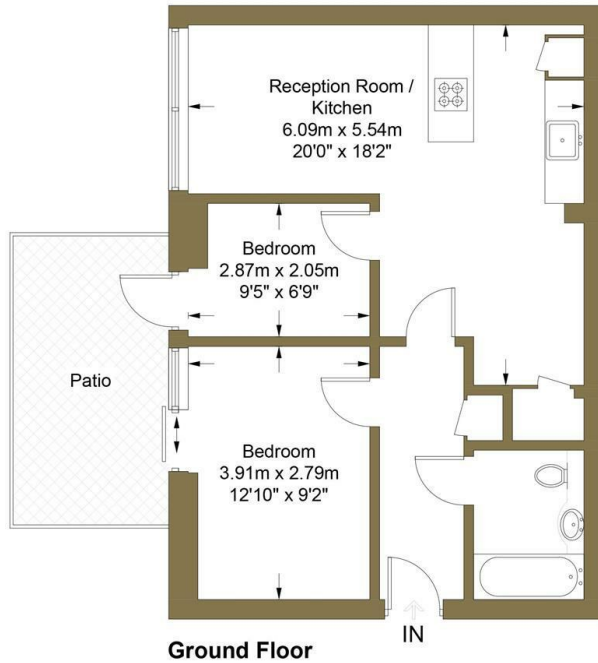
Asking Price £475,000

- Internal Area 585 sq.ft
- Private Patio
- Fully fitted Kitchen
- 24 Hour Concierge
- Communal Gardens
- Close to Camden Town Station and Primrose Hill
- Resident Gym
- Wooden Floors

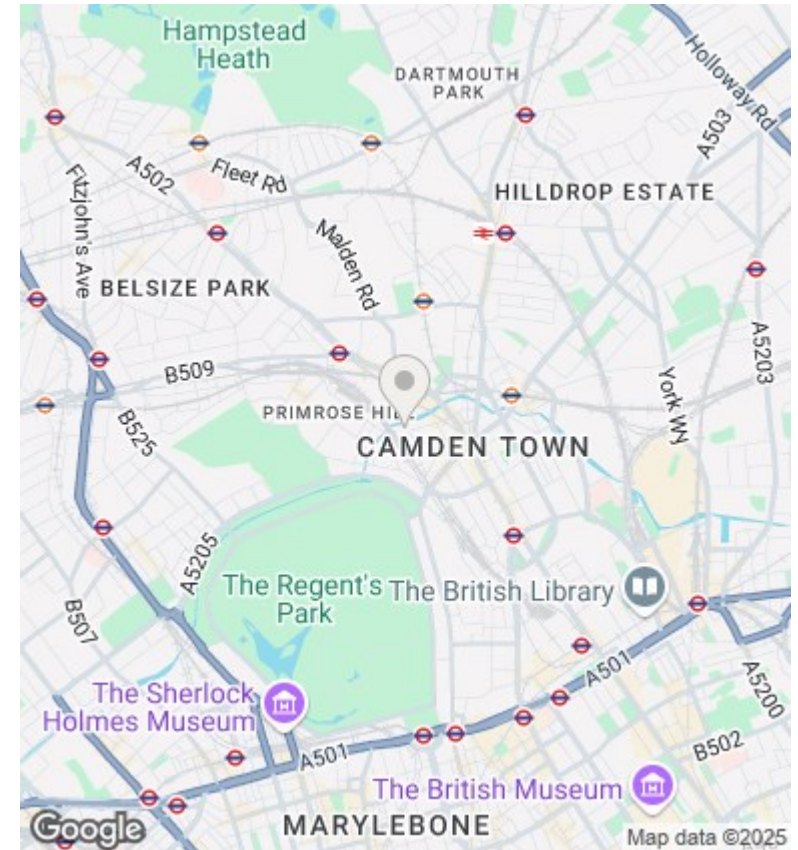


The Lockhouse, NW1

Approximate Gross Internal Area = 54.4 sq m / 585 sq ft



This plan is for layout guidance only. Not drawn to scale unless stated. Windows and door openings are approximate. Whilst every care is taken in the preparation of this plan, please check all dimensions, shapes and compass bearings before making any decisions reliant upon them. (ID774595)



Viewings

Viewings by arrangement only.
Call 02077225022 to make an appointment.

Council Tax Band

E

EPC Rating:

Energy Efficiency Rating		
	Current	Potential
<i>Very energy efficient - lower running costs</i>		
(92 plus) A		
(81-91) B		
(69-80) C		
(55-68) D		
(39-54) E		
(21-38) F		
(1-20) G		
<i>Not energy efficient - higher running costs</i>		
England & Wales	EU Directive 2002/91/EC	