



## Regents Park Road, Finchley, N3

### Weekly Rental Of £820



800 finchley road, hampstead garden suburb, london, nw11 7tj  
telephone 020 8458 5000 facsimile 020 8209 2068  
email [sales@litchfields.com](mailto:sales@litchfields.com) web [litchfields.com](http://litchfields.com)  
offices also in crouch end & highgate

**Be the first Tenant to rent this luxury brand new 1st floor apartment with lift and secure underground parking space, boasting two large balconies off the reception and master bedroom overlooking College Farm. Built to the highest of standards with two contemporary bathrooms (1 en-suite), stunning bespoke kitchen open plan with a spacious reception room and a utility room. Further features include comfort cooling, speaker system and superb herringbone parquet wood floors throughout this lifestyle home. Short walk to both Finchley Central and Temple Fortune on the Finchley Road. Viewing is a must! Unfurnished.**

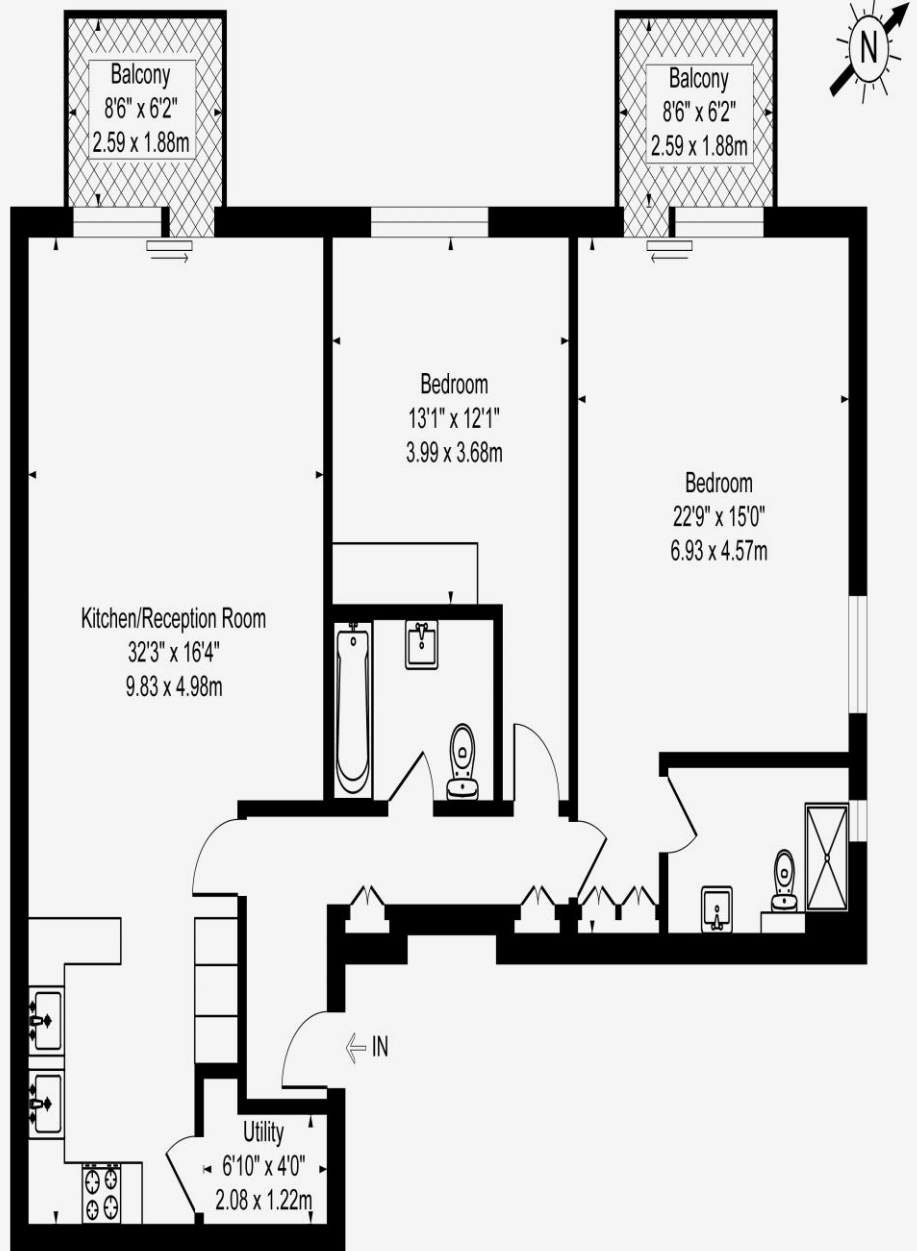






## Regents Park Road, London N3

Approximate Gross Internal Area  
1184 sq ft - 110 sq m



**First Floor**

Illustration for identification purposes only, not in scale