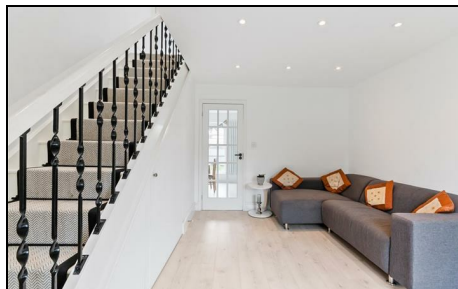


## Willmore End London, SW19 3DF

£499,950 Freehold

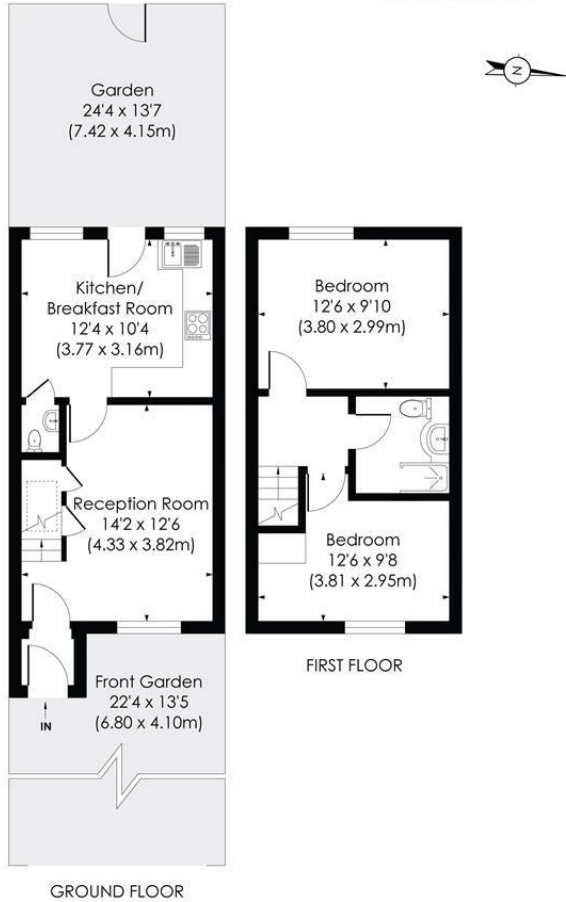


Beautifully presented and refurbished two double bedrooms freehold house for sale near to the Northern line tube station at South Wimbledon. Located on sought after cul de sac. The house has a modern and contemporary feel throughout and has a lovely private garden. The property is being sold with the benefit of no onward chain.

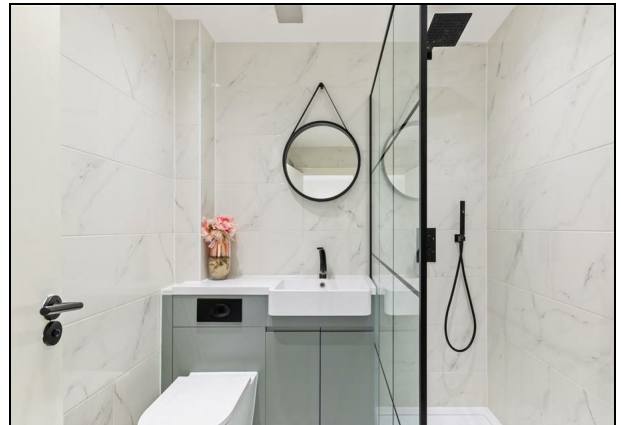
**WILLMORE END, SW19**

Approx. Gross Internal Floor Area

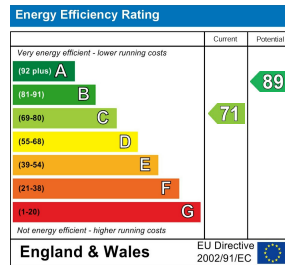
**645 Sq. ft/59.88 Sq. m**



© Pixangle Property Marketing Ltd. info@pixangle.com Tel: 0208 870 2118  
 This floor plan has been prepared for the purpose of illustration only in accordance with the latest RICS code of measuring practice and is not to scale. All measurements and areas are approximate and whilst every effort has been made to ensure the accuracy of the plan contained here, no responsibility is taken for any error, omission or misstatement.



- Refurbished house
- Two double bedrooms
- Private garden
- Near to South Wimbledon tube Station
- No onward chain
- Beautifully presented throughout
- EPC - C
- Council Tax Band - D



**For Free Mortgage Quote and Best Mortgage Rates, call Ellisons Mortgage Advisor on 0208 543 1166**



Although these particulars are believed to be correct, their accuracy is not guaranteed and they do not form part of any contract.

**Celebrating 30 years of successful Sales and Lettings in Merton**

