



Pump House Crescent, Brentford, TW8 0FW

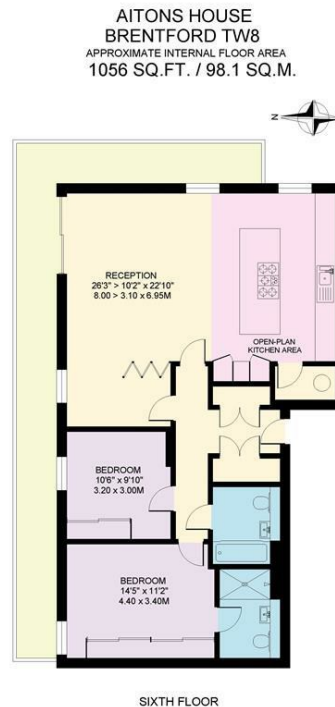
£795,000

**WHITMAN & CO.**

SALES · LETTINGS · COMMERCIAL

- Impressive 6th floor apartment
- Far reaching views
- Two underground parking spaces
- Wrap around balcony
- Stunning kitchen/dining/reception room
- No onward chain

Tenure - Leasehold  
 Lease Length - 989 Years remaining  
 Ground Rent - £300 pa  
 Service Charge - £4735 pa  
 Local Authority - Hounslow  
 Council Tax - Band E



COPYRIGHT:  
 FLOORPLAN PRODUCED FOR "KNIGHT FRANK" by FLOORPLANNERS  
 This plan is not to scale (unless specified) and is for guidance only,  
 and must not be relied upon as a statement of fact.  
 All measurements and areas are approximate only, and have been prepared  
 in accordance with the current edition of the RICS Code of Measuring Practice.  
 Please read the Important Notice on the last page of the text of the particulars.

## THE PROPERTY

An impressive, immaculately presented sixth-floor apartment with far-reaching views set within this high-end riverside development by Kew Bridge. The apartment has an abundance of light with a stunning dual aspect kitchen/dining/reception room, wrap-around balcony, master bedroom with extensive wardrobes and luxury ensuite, second double bedroom with fitted wardrobes, main bathroom, partitionable study area (possible 3rd bed), entrance hall with good storage, air conditioning, mechanical ventilation system, two allocated secure underground parking spaces, 24-hour concierge, onsite gym and lift access. Aitons House is in a super location close to Kew Bridge Station (30 minutes to Waterloo), Kew Gardens, Strand on the Green Riverside and offers vehicular access via the A4/M4 into central London and out to Heathrow and The West. No onward chain.

## SITUATION



5-7 Turnham Green Terrace, Chiswick, London, W4 1RG

Tel 020 8747 8800

E-mail [sales@whitmanandco.com](mailto:sales@whitmanandco.com)

Website [www.whitmanandco.com](http://www.whitmanandco.com)