



Peter Barry
working harder for you

Tel: 020 8360 4777
www.pbea.co.uk



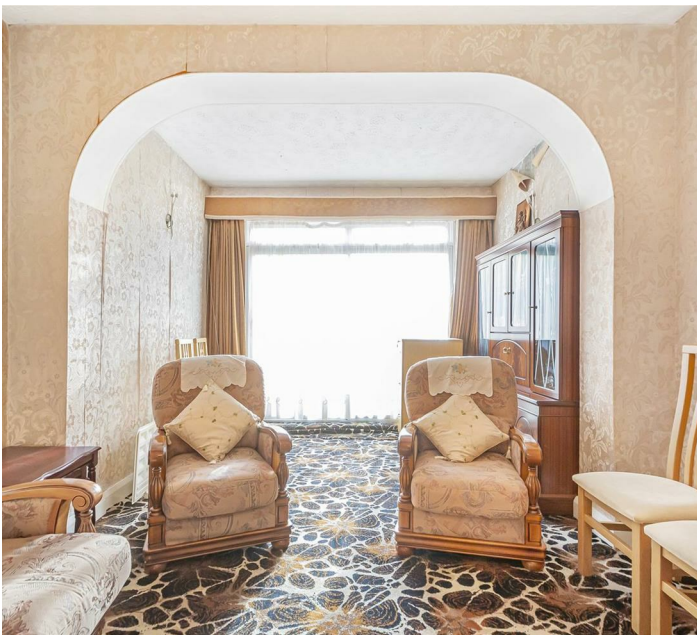
Ridge Avenue, Winchmore Hill, N21 2RJ

Peter Barry are delighted to present this exceptional three-bedroom family home, perfectly positioned in the heart of Winchmore Hill with three double bedrooms.

This wonderful home truly combines space, comfort, and location, making it a fantastic opportunity for families looking to settle in this sought-after area.

- Double garage
- Three double bedrooms
- Utility room
- Large extended ground floor space
- 0.8 Miles to the station
- Great catchment for local schools
- Modern bathroom

£799,995



Energy Efficiency Rating		Current	Potential
Very energy efficient - lower running costs			
(92 plus)	A		
(81-91)	B		
(69-80)	C		76
(55-68)	D		
(39-54)	E	42	
(21-38)	F		
(1-20)	G		
Not energy efficient - higher running costs			
England & Wales		EU Directive 2002/91/EC 