



2 Miller Close, Hethersett

In Excess of £300,000

2 Miller Close

Hethersett, Norwich

This well-presented three-bedroom semi-detached house offers a perfect combination of comfort and modern style. The property boasts a spacious lounge, an open-plan kitchen/diner, and a well-maintained rear garden, making it ideal for family living. With off-road parking and a high standard of presentation throughout, this home offers a bright and airy living environment. Conveniently located close to local amenities, it provides the ideal balance of practicality and appeal for those seeking a stylish home in a desirable location.

Council Tax band: D

Tenure: Freehold

EPC Energy Efficiency Rating: B

EPC Environmental Impact Rating: B





2 Miller Close

Hethersett, Norwich

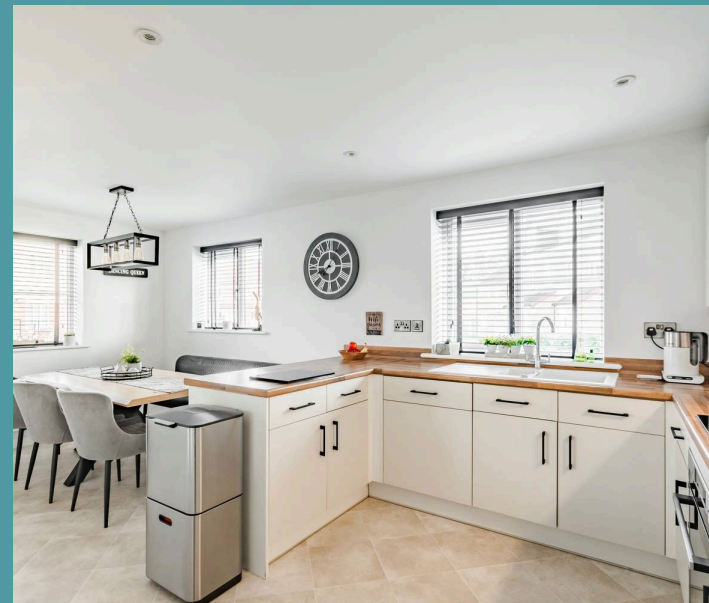
This well-presented three-bedroom semi-detached house offers a perfect combination of comfort and modern style. The property boasts a spacious lounge, an open-plan kitchen/diner, and a well-maintained rear garden, making it ideal for family living. With off-road parking and a high standard of presentation throughout, this home offers a bright and airy living environment. Conveniently located close to local amenities, it provides the ideal balance of practicality and appeal for those seeking a stylish home in a desirable location.

Location

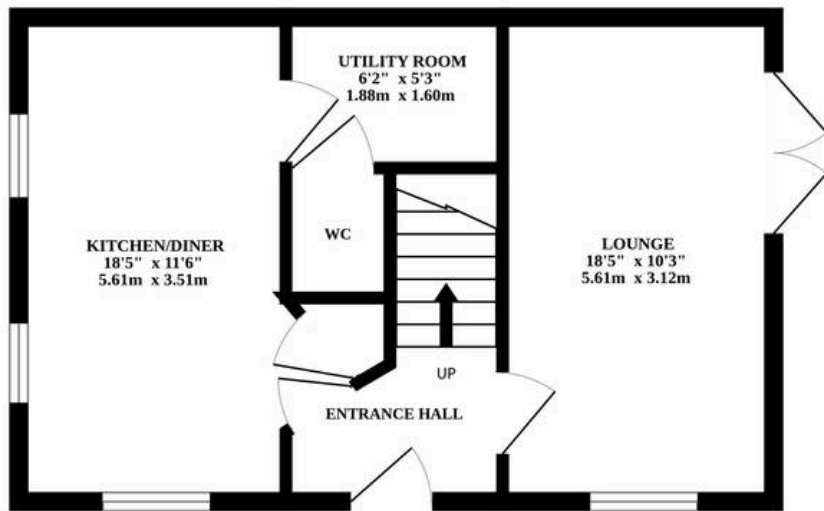
Miller Close, located in the village of Hethersett, offers a tranquil residential setting within easy reach of essential amenities and services. The area benefits from low levels of crime and a higher-than-average household income, contributing to a desirable living environment. It is well-connected to surrounding locations by road, making it convenient for commuting or leisure activities. The neighbourhood also enjoys a peaceful atmosphere with good local schools and green spaces nearby, offering an ideal location for families and professionals alike. The area's affluence and low levels of deprivation make it a sought-after spot.

Miller Close, Hethersett

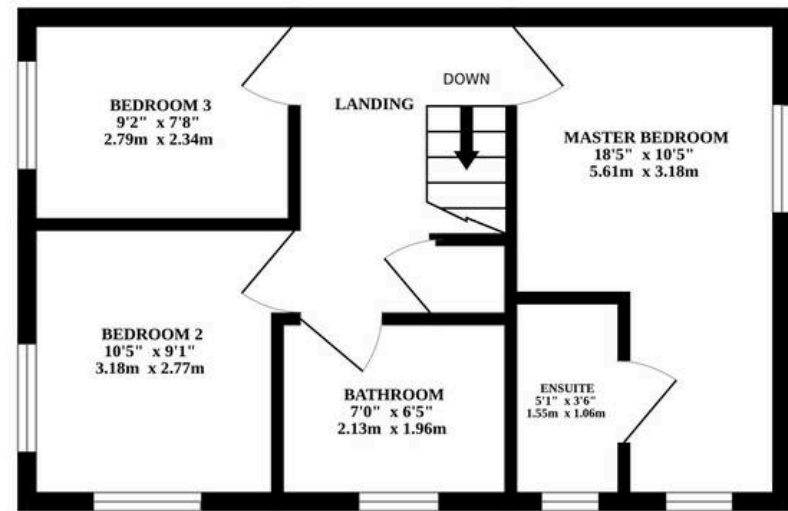
Upon entering, you are greeted by a bright and airy entrance hallway featuring wooden effect flooring, providing access to the kitchen, lounge, and stairs leading to the first floor. The heart of the home is the open-plan kitchen/diner, ideal for family gatherings and entertaining guests. The kitchen



GROUND FLOOR



1ST FLOOR



Whilst every attempt has been made to ensure the accuracy of the floorplan contained here, measurements of doors, windows, rooms and any other items are approximate and no responsibility is taken for any error, omission or mis-statement. This plan is for illustrative purposes only and should be used as such by any prospective purchaser. The services, systems and appliances shown have not been tested and no guarantee as to their operability or efficiency can be given.
Made with Metropix ©2024

