



Fitzroy Crescent, London, W4

£435,000

WHITMAN & CO.

SALES · LETTINGS · COMMERCIAL

- Popular development
- Sougth after location
- Share in the freehold
- Top floor apartment
- Allocated off-street parking
- No onward chain

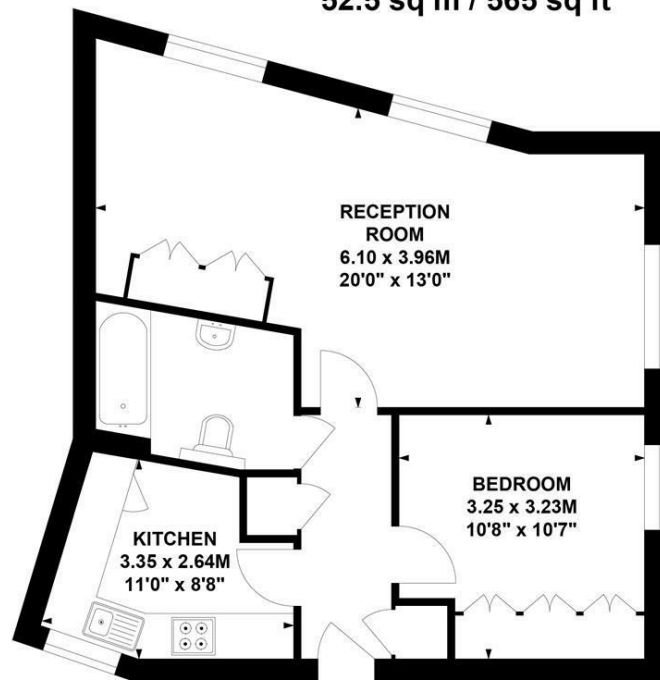
Tenure - Leasehold with Share of Freehold
 Lease Length - 985 years
 Ground rent - Peppercorn
 Service charge - £2160 pa
 Local Authority - Hounslow
 Council Tax - Band E

THE PROPERTY

An exceptionally light and spacious top-floor flat within this award-winning development, located opposite Chiswick House and Grounds. The property features a 20' reception room, a generously sized double bedroom, a luxury bathroom, and a fully integrated kitchen. Additional benefits include an allocated off-street parking space, a share in the freehold, and commanding views. Ideally situated close to numerous transport links, as well as a fantastic selection of local restaurants, bars, and shops. Offered with no onward chain.

Fitzroy Crescent, W4

Approximate Gross Internal Area
52.5 sq m / 565 sq ft

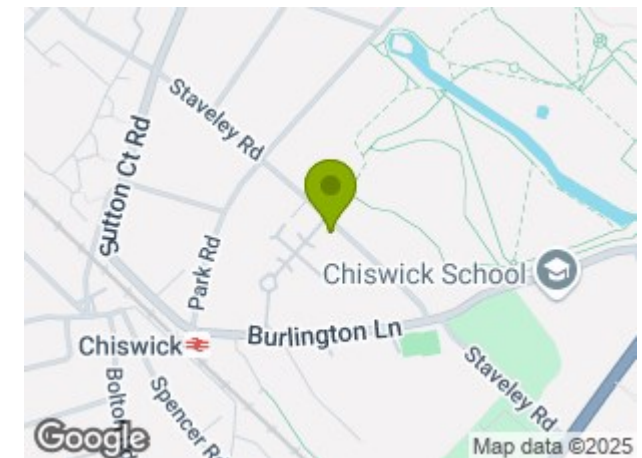


Key :
 CH - Ceiling Height



Not to scale, for guidance only and must not be relied upon as a statement of fact.
 All measurements and areas are approximate only

SITUATION



5-7 Turnham Green Terrace, Chiswick, London, W4 1RG

Tel 020 8747 8800

E-mail sales@whitmanandco.com

Website www.whitmanandco.com