



Liden The Street, Reymerston

In Excess of £450,000

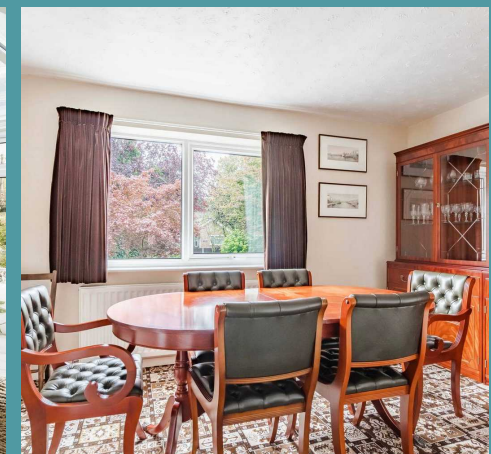
Liden The Street

Reymerston, Norwich

Located in the picturesque village of Reymerston, this stunning five-bedroom home offers spacious, modern living for families or those seeking generous accommodation. The property boasts a large sitting room that opens into a bright conservatory, ideal for relaxation and entertaining. The modern kitchen features luxurious marbled countertops, complemented by a nearby utility room and direct access to the garage for added convenience. The home also includes five well-appointed bedrooms, two luxurious bathrooms and a beautifully landscaped garden with a greenhouse. With ample parking and thoughtful design, this home effortlessly blends comfort and style in a serene setting.

The Location

The charming village of Reymerston, offering a picturesque countryside setting with convenient access to essential amenities. Within the village, you'll find the Reymerston Village Hall, a hub for community events and gatherings. Just a short drive away, Dereham town awaits, providing a wealth of amenities and services. Dereham boasts a variety of supermarkets, including Tesco and Aldi, ensuring your grocery needs are well-catered for. Additionally, you'll have easy access to medical facilities, including doctors and dentists. The property's location is further enhanced by its proximity to the A47, a major road that connects you to both Swaffham and Norwich, allowing for convenient commutes and access to a wider range of amenities and attractions in these bustling towns.





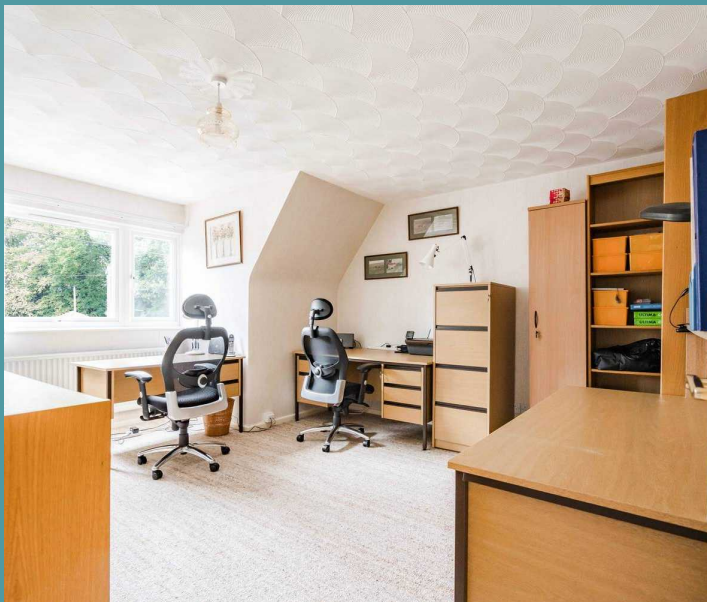
Liden The Street

Reymerston, Norwich

The Street

Positioned in the charming village of Reymerston, this impressive five-bedroom home offers spacious accommodation, perfect for families or those seeking generous living space. The ground floor features a large sitting room that flows seamlessly into a bright conservatory, providing a perfect space for relaxing and entertaining.

A dining room creates a setting for gatherings, while the kitchen, complete with marbled countertops, is a functional yet aesthetic place to cook your favourite meals. The nearby utility room offers additional practicality and a convenient internal hallway leads directly into the garage, ensuring ease of access without stepping outside. A WC is also available on this floor for added convenience.



Ascending the grand oak staircase, adorned with contemporary glass paneling, you'll find five generously sized bedrooms. One bedroom has been designed as a luxurious dressing room with bespoke fitted wardrobes, while another serves as a study, offering flexible space for home working or hobbies. The modern bathrooms are finished to the highest standard, including a luxurious shower room and a full bathroom, both exuding elegance.



Liden The Street

Reymerston, Norwich

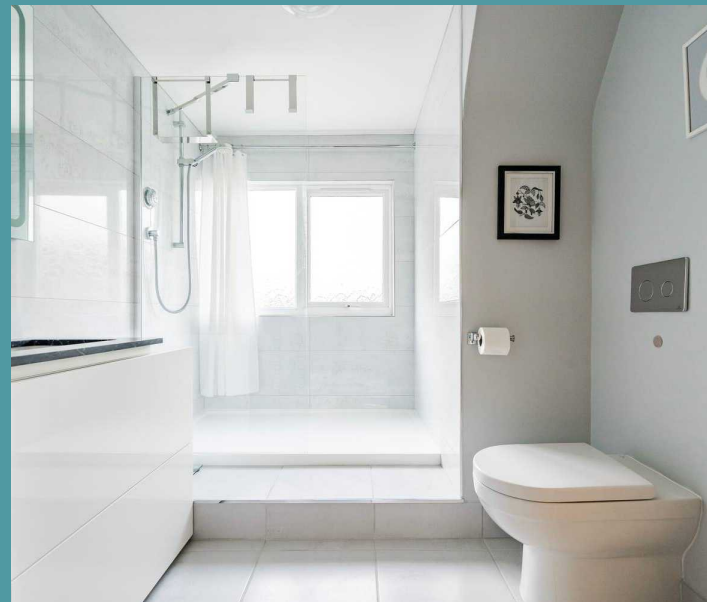
The landscaped gardens, provide a quiet setting for those who love the outdoors. Mature trees and vibrant greenery offer a peaceful environment, while a well-maintained lawn and stepping stones create a picturesque path leading through the garden. A charming greenhouse adds both functionality and appeal, perfect for gardening enthusiasts to nurture plants all year round. With its thoughtful design and attention to detail, this outdoor space is ideal for relaxation and enjoying nature at its finest. A large red brick driveway provides ample parking space for multiple cars.

Agents Note

Sold freehold and connected to mains water, and electricity.

Oil Central and Treatment Plant

Council Tax Band - E

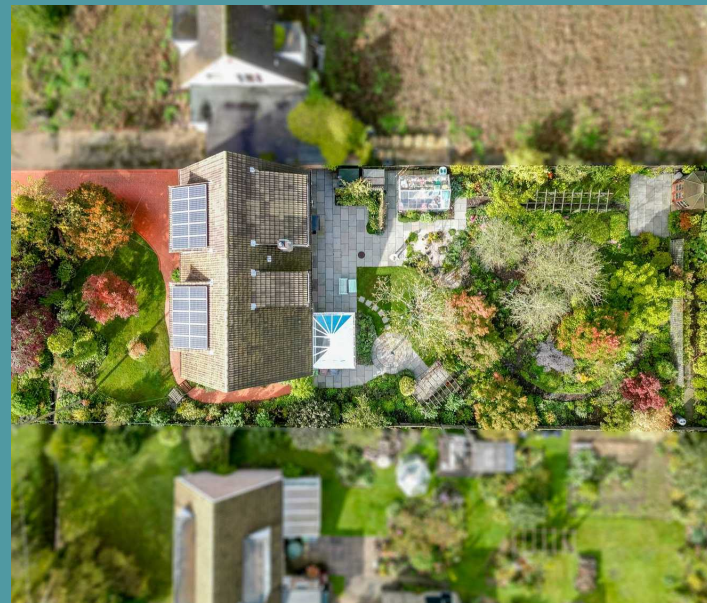




Liden The Street

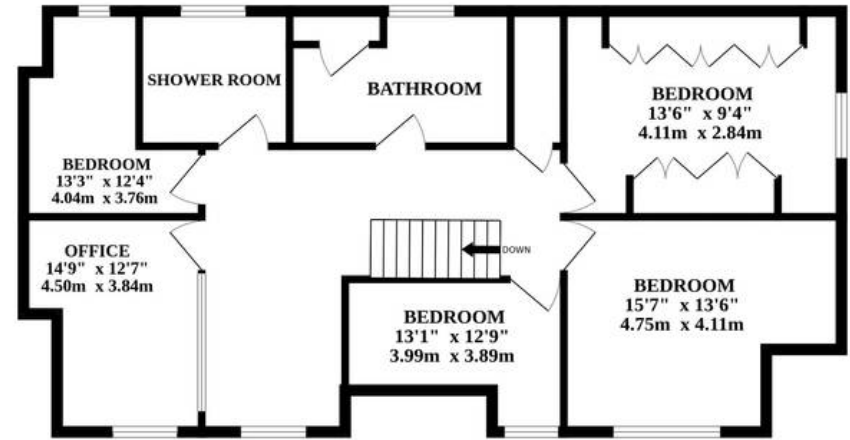
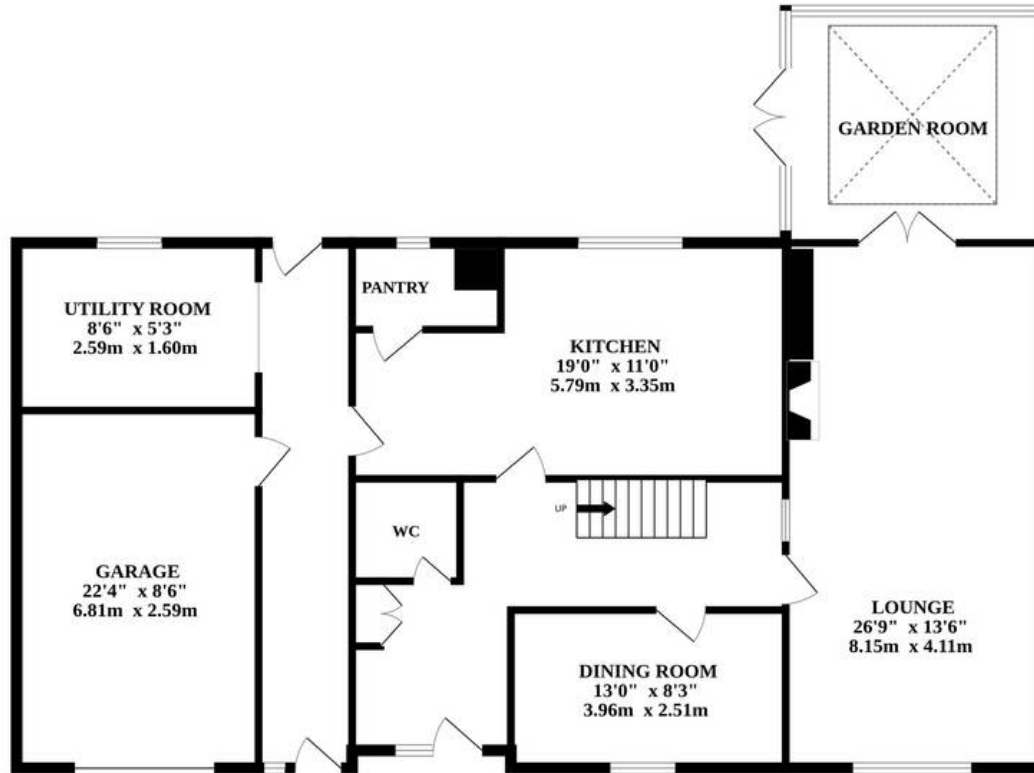
Reymerston, Norwich

- Five generously sized bedrooms, including a dedicated dressing room and a versatile study
-
- Spacious sitting room leading into a bright, inviting conservatory
-
- Elegant oak staircase with contemporary glass paneling
- Modern kitchen with marbled countertops and adjacent utility room
-
- Direct internal access to the garage through a convenient hallway
-
- Two luxurious, fully fitted bathrooms, including a shower room and a full bathroom
-
- Landscaped garden featuring mature trees, stepping stone paths, and a greenhouse
-
- Red brick driveway providing ample parking for multiple cars
-
- Large dining room, perfect for family gatherings and entertaining



GROUND FLOOR

1ST FLOOR



Whilst every attempt has been made to ensure the accuracy of the floorplan contained here, measurements of doors, windows, rooms and any other items are approximate and no responsibility is taken for any error, omission or mis-statement. This plan is for illustrative purposes only and should be used as such by any prospective purchaser. The services, systems and appliances shown have not been tested and no guarantee as to their operability or efficiency can be given.

Made with Metropix ©2024