



11 Well Close, Sparham

£280,000

11 Well Close

Sparham, Norwich

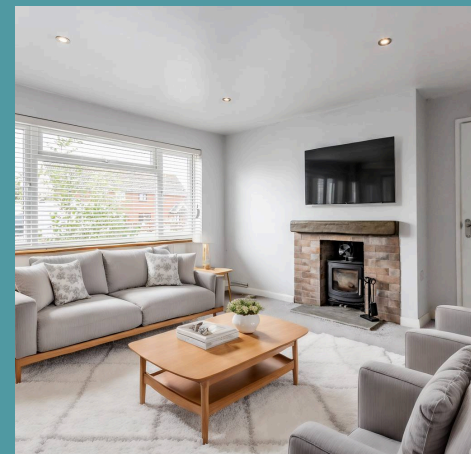
Modern living in a rural location. This inviting two-bedroom detached bungalow offers a comfortable and convenient lifestyle. The spacious living area and well-designed kitchen create an open and inviting atmosphere, while the two double bedrooms and bathroom provide ample space for relaxation and privacy. Outside, the large driveway and substantial lawn space offer plenty of parking and outdoor enjoyment.

Council Tax band: A

Tenure: Freehold

EPC Energy Efficiency Rating: E

EPC Environmental Impact Rating: E





11 Well Close

Sparham, Norwich

Modern living in a rural location. This inviting two-bedroom detached bungalow offers a comfortable and convenient lifestyle. The spacious living area and well-designed kitchen create an open and inviting atmosphere, while the two double bedrooms and bathroom provide ample space for relaxation and privacy. Outside, the large driveway and substantial lawn space offer plenty of parking and outdoor enjoyment.

LOCATION

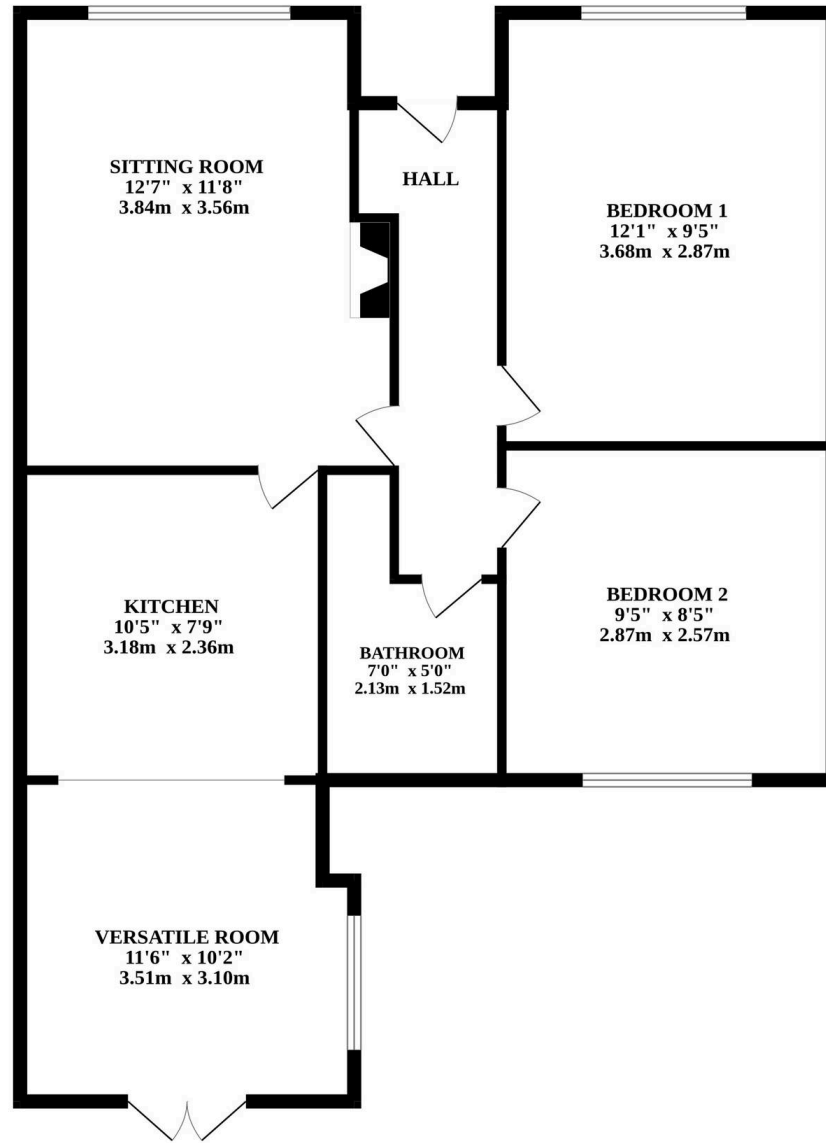
Well Close in Sparham offers a serene residential setting in the heart of the Norfolk countryside. This charming location is characterized by its peaceful atmosphere and beautiful rural surroundings. Nestled within the village of Sparham, residents enjoy the benefits of a close-knit community while being surrounded by the scenic beauty of the Norfolk landscape. Sparham itself is steeped in history and offers a glimpse into traditional Norfolk village life. Well Close provides easy access to the nearby natural attractions, woodlands, and the stunning Wensum River. Whether you're exploring the local wildlife, enjoying leisurely walks, or simply savoring the tranquility of rural living, Well Close in Sparham is an ideal place to call home for those seeking a peaceful countryside lifestyle.

THE PROPERTY

Introducing this inviting two-bedroom detached bungalow, a perfect blend of modern convenience and comfortable living. As you enter through the welcoming entrance hall, you'll immediately feel the warmth and style that defines this home.



GROUND FLOOR
1236 sq.ft. (114.9 sq.m.) approx.



TOTAL FLOOR AREA : 1236 sq.ft. (114.9 sq.m.) approx.
Whilst every attempt has been made to ensure the accuracy of the floorplan contained here, measurements of doors, windows, rooms and any other items are approximate and no responsibility is taken for any error, omission or mis-statement. This plan is for illustrative purposes only and should be used as such by any prospective purchaser. The services, systems and appliances shown have not been tested and no guarantee as to their operability or efficiency can be given.
Made with Metropix ©2023