



4 Grove Road, Repps With Bastwick
£310,000

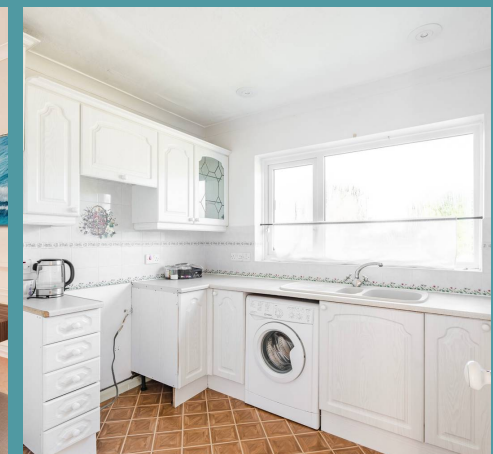
4 Grove Road

Repps With Bastwick, Great Yarmouth

This charming detached 2-bedroom bungalow in Repps With Bastwick offers a quiet living experience with a versatile floor plan, perfect for various lifestyles. Featuring a large garden, driveway parking, and storage sheds. Inside, you'll find a bright conservatory, a well-equipped kitchen and a living room that can double as an additional bedroom. The beautifully landscaped gardens and proximity to local schools and shops in Great Yarmouth make this home perfect for families seeking tranquility and convenience.

The Location

In Repps With Bastwick, residents can find local schools offering primary education, such as Repps with Bastwick Primary School. For shopping needs, there are convenience stores in nearby villages, while Great Yarmouth is just a short drive away (6 miles), providing a wider selection of shops, supermarkets, and services. The village atmosphere is complemented by community events, making it an ideal location for families seeking a peaceful lifestyle with access to educational and retail facilities.





4 Grove Road

Repps With Bastwick, Great Yarmouth

Grove Road

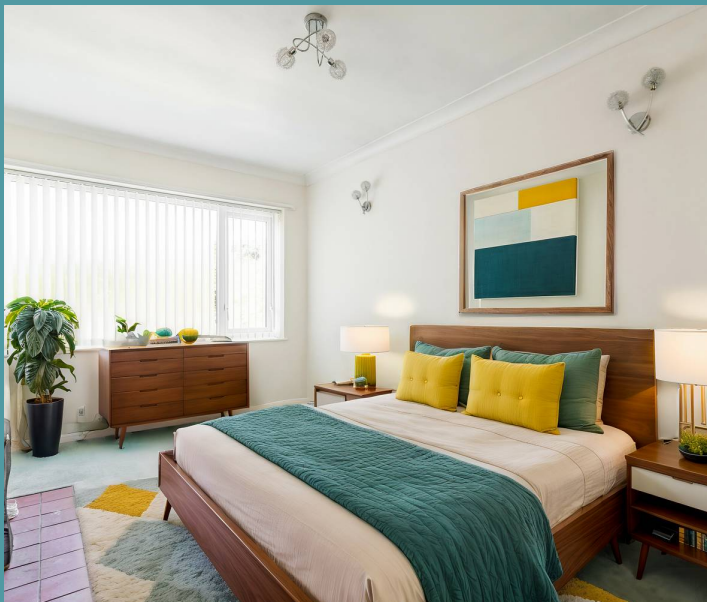
Welcome to this charming detached 2-bedroom bungalow, ideally situated in a serene location.

The property features a versatile floor plan, perfect for various lifestyle needs. With a large garden, driveway parking, and convenient storage sheds, there's ample outdoor space for gardening or relaxation.

Step inside to find a warm and inviting atmosphere. The conservatory porch welcomes you with its white uPVC construction, providing a bright and airy space.

The entrance hall leads you into the kitchen equipped with lightwood-patterned fitted units, an electric hob and oven and space for essential appliances.

The living room serves as a versatile space, doubling as an additional double bedroom with a charming tiled open fireplace and a view of the garden.





4 Grove Road

Repps With Bastwick, Great Yarmouth

The property includes a comfortable double bedroom with direct access to the conservatory, a separate dining room and a well-appointed bathroom with modern fixtures. Outside, the beautifully landscaped gardens feature, with a hedged front garden and a generous back garden, complete with an oil storage tank and two storage sheds.

Agents Note

Sold Freehold

Connected to mains water, electricity and drainage.

Oil Fired Heating

Council Tax - C

- Charming detached 2-bedroom bungalow
- Versatile floor plan suitable for various lifestyles
- Proximity to local schools and shops, with Great Yarmouth just 6 miles away
- Well-equipped kitchen with light wood-patterned units
- Living room that can double as an additional bedroom
- Comfortable double bedroom with direct conservatory access
- Beautifully landscaped gardens with hedged front and generous back garden



GROUND FLOOR

