



Beehive Road, Goffs Oak



- CLOSE TO AMENITIES
- QUIET HORSESHOE SHAPE ROAD
- 2 RECEPTION ROOMS
- 4 BEDROOMS
- BATHROOM WITH SHOWER
- SECLUDED GARDEN
- FEW MINUTES WALK TO GOFFS OAK PRIMARY SCHOOL
- GARAGE AND OFF STREET PARKING

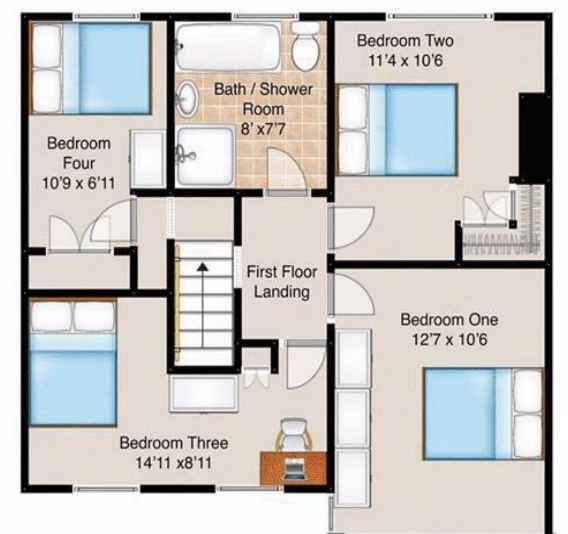
Beehive Road
Goffs Oak EN7 5NL

Situated in a QUIET HORSESHOE SHAPE ROAD you will find this 4 BEDROOM semi detached family home which shows in GOOD DECORATIVE ORDER throughout. This quiet location is CLOSE TO ALL AMENITIES INCLUDING GOFFS OAK JUNIOR SCHOOL being only a few minutes' walk and within easy reach of GOFFS ACADEMY SECONDARY SCHOOL. The accommodation consists of: Entrance hallway, living room which leads into a dining room, conservatory, kitchen with breakfast bar, downstairs cloakroom. Upstairs there are 4 good size bedrooms with a family bathroom with shower. Secluded rear garden with secure side access. Garage with plumbing and electricity. Off street parking.

The area of Cuffley and Goffs Oak is popular with commuters as it is surrounded by Hertfordshire countryside, yet very conveniently placed for transport links into London, just a few miles from the M25/A10 and just a few minutes drive from Cuffley station with regular trains to London Finsbury Park, Kings Cross and Moorgate. There is a good selection of local shops for daily conveniences, including local eateries and there are further shops at the Brookfield Shopping Centre. Positioned ideally for families with local schooling in mind.



Beehive Road, Goffs Oak, EN7



Score	Energy rating	Current	Potential
92+	A		
81-91	B		86 B
69-80	C		
55-68	D	62 D	
39-54	E		
21-38	F		
1-20	G		